



CLINTON COUNTY DRAIN COMMISSIONER
Phil Hanses
100 E. State Street, Suite 2300
St. Johns, MI 48879
(989) 224-5160

NOTICE OF DAY OF REVIEW OF DRAINAGE DISTRICT BOUNDARY

GILLISON DRAIN

DATE: Friday, April 16, 2021

TIME: 9:00 a.m. – 5:00 p.m.

LOCATION: Clinton County Drain Commissioner's Office
100 E. State Street
Suite 2300
St. Johns, Michigan 48879

QUESTIONS: (989) 224-5160

The Day of Review is an opportunity to review the Drainage District boundary for the Gillison Drain with the Drain Commissioner or a staff member. A map of the proposed Drainage District boundary revisions can be found on the reverse side of this notice and online at the Clinton County Drain Commissioner's website at: www.clinton-county.org/250/Drain-Commissioners-Office/.

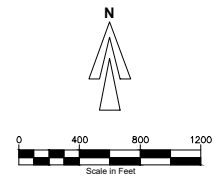
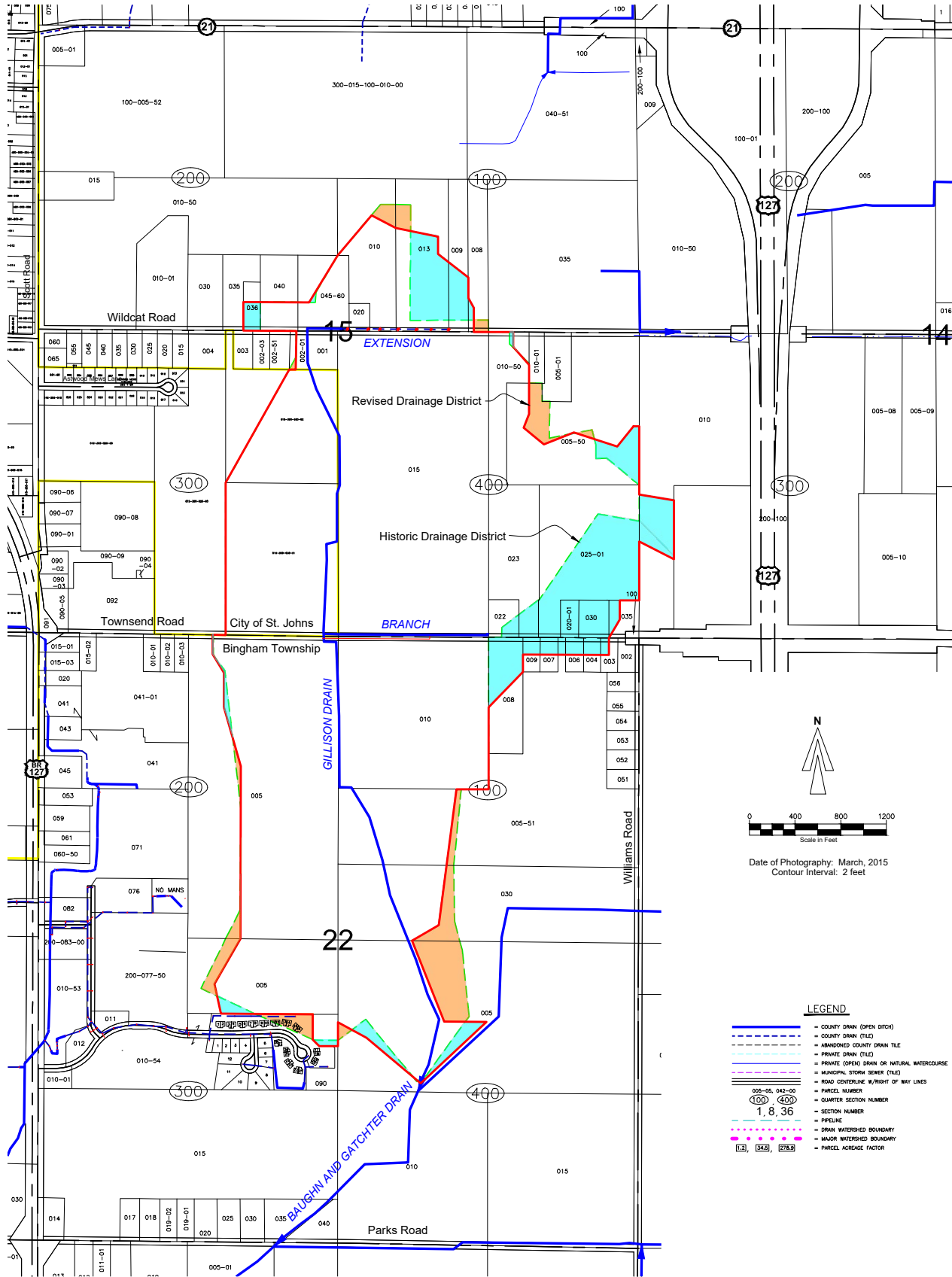
The Drain Commissioner, engineers, and/or other staff members will be available to assist individuals throughout the day and make revisions where necessary. Masks are required to enter the Courthouse and social distancing guidelines will be in effect. There is no need to schedule an appointment for a specific time on the Day of Review.

Persons with disabilities needing accommodations for effective participation in the Day of Review should contact the Drain Commissioner's Office at the phone number listed above (voice) or through the Michigan Relay Center at 7-1-1 (TDD) at least 24 hours in advance of the Day of Review to request mobility, visual, hearing or other assistance.

You may appeal the Drain Commissioner's decision to revise the district boundary to the Clinton County Circuit Court within ten (10) days.

#510 GILLISON DRAIN DRAINAGE DISTRICT

Sections 14, 15, & 22, Bingham Township and City of St. Johns



Date of Photography: March, 2015
Contour Interval: 2 feet

LEGEND

- COUNTY DRAIN (OPEN DITCH)
- - - - - COUNTY DRAIN (TILE)
- - - - - ABANDONED COUNTY DRAIN TILE
- - - - - PRIVATE DRAIN (TILE)
- - - - - PRIVATE OPEN DRAIN OR NATURAL WATERCOURSE
- - - - - MUNICIPAL STORM SEWER (TILE)
- - - - - ROAD CENTERLINE W/RIGHT OF WAY LINES
- - - - - PARCEL NUMBER
- (100) (400) QUARTER SECTION NUMBER
- 1, 8, 36 SECTION NUMBER
- - - - - PIPELINE
- - - - - DRAIN WATERSHED BOUNDARY
- - - - - MAJOR WATERSHED BOUNDARY
- 13, 15, 27, 35 PRICEL ACRES FACTOR

- - - - - HISTORIC DRAINAGE DISTRICT BOUNDARY
- - - - - AMENDED DRAINAGE DISTRICT BOUNDARY
- LAND AREA RECOMMENDED TO BE ADDED TO DRAINAGE DISTRICT
- LAND AREA RECOMMENDED TO BE REMOVED FROM DRAINAGE DISTRICT