

CLINTON COUNTY CENTRAL DISPATCH  
MONTHLY SERVICES REPORT  
September 2010

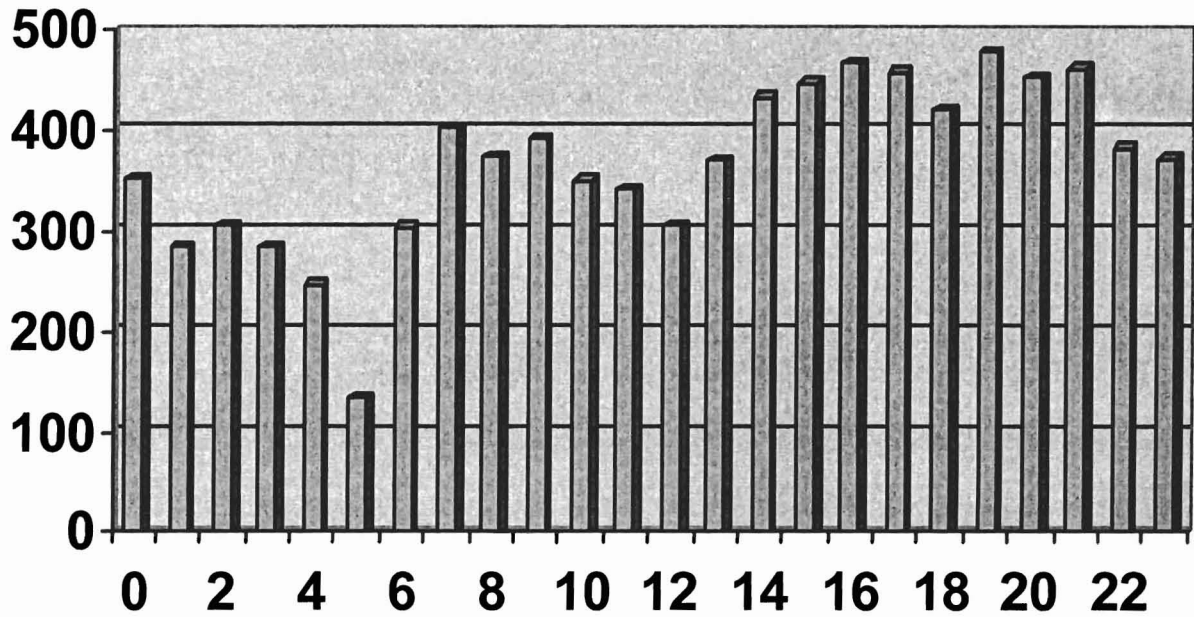
	THIS MONTH	MONTH LAST YEAR	% CHANGE IN M.T.D.	YEAR TO DATE	LAST YEAR TO DATE	% CHANGE IN Y.T.D.
A. REQUESTS FOR SERVICE						
1. Total Requests for Service	8907	8779	1.46%	77365	82212	-5.90%
2. Average per Day	297	293	1.46%	283	301	-5.90%
3. Average per Hour	12	12	1.46%	12	13	-5.90%
B. PATROL GENERATED DISPATCHES	3894	3650	6.68%	38367	32154	19.32%
C. SUMMARY CALLS FOR SERVICE						
1. Police Dispatches	2365	2809	-15.81%	20925	25375	-17.54%
2. Fire Dispatches	89	66	34.85%	687	692	-0.72%
3. Medical First Responder Dispatches	232	189	22.75%	1920	1840	4.35%
4. Ambulance Dispatches	506	425	19.06%	3962	4021	-1.47%
5. Dispatch Completed	1346	1245	8.11%	10795	11356	0.00%
6. Activity Not Dispatched	806	821	-1.83%	8993	7114	26.41%
D. TOTAL CALLS FOR SERVICE	3998	4310	-7.24%	43741	46738	-6.41%
E. PERCENTAGE OF DISPATCHES						
1. Police Dispatches	59.15%	65.17%	-9.24%	47.84%	54.29%	-11.89%
2. Fire Dispatches	2.23%	1.53%	45.37%	1.57%	1.48%	6.08%
3. Medical First Responder Dispatches	5.80%	4.39%	32.33%	4.39%	3.94%	11.50%
4. Ambulance Dispatches	12.66%	9.86%	28.35%	9.06%	8.60%	5.28%
5. Dispatch Completed	33.67%	28.89%	16.55%	24.68%	24.30%	0.00%
6. Activity Not Dispatched	20.16%	19.05%	5.83%	20.56%	15.22%	35.07%
F. TOTAL DISPATCHES						
1. Grand Total All Dispatches	7892	7960	-0.85%	17750	17599	0.86%
2. Ratio Requests to Dispatches	1.13	1.02	10.82%	1.13	21.03	-94.63%
G. MOBILE DATA SYSTEM						
1. Total Transactions	38452	42493	-9.51%	394289	400979	-1.67%

**SEPTEMBER 2010  
TELEPHONE CALL ACTIVITY**

TIME PERIOD	00:00 02:59	03:00 05:59	06:00 08:59	09:00 11:59	12:00 14:59	15:00 17:59	18:00 20:59	21:00 23:59	SUB TOTALS
INCOMING (aver. per hr.)	463 5.1	370 4.1	708 7.9	988 11.0	1091 12.1	1164 12.9	1019 11.3	688 7.6	6491 9.0
OUTGOING (aver. per hr.)	184 2.0	143 1.6	210 2.3	366 4.1	319 3.5	436 4.8	465 5.2	293 3.3	2416 3.4
ALL CALLS AVER. PER HR AVER. PER DAY	647.0 7.2	513.0 5.7	918.0 10.2	1354.0 15.0	1410.0 15.7	1600.0 17.8	1484.0 16.5	981.0 10.9	8907.0 12.4 296.9
		<b>THIS MONTH</b>	<b>MONTH LAST YR</b>	<b>% CHANGE IN M.T.D.</b>		<b>YEAR TO DATE</b>	<b>LAST YR TO DATE</b>	<b>% CHANGE IN Y.T.D.</b>	
911 & VoIP TRUNKS		1578	1528	3%		13824	15772	-12%	
CELLULAR CALLS		1611	1547	4%		13838	13636	1%	
GENERAL CALLS		3302	3152	5%		28551	29895	-4%	
TOTAL		6491	6227	4%		56213	59303	-5%	
% 911 & VoIP TRUNKS		24.3%	24.5%			24.6%	26.6%	-8%	
% CELLULAR CALLS		24.8%	24.8%			24.6%	23.0%		
% GENERAL CALLS		50.9%	50.6%			50.8%	50.4%		
<b>Y.T.D. EMERGENCY CALLS:</b>					<b>CELLULAR</b>	<b>50%</b>	<b>49%</b>		
<b>VoIP CALLS:</b> Increasing number of VoIP providers now sending their 911 calls through traditional 911 trunks									

### Calls For Service by Hour of Day

Date: 09/01/2010 - 09/30/2010



### Calls For Service by Day of Week

Date: 09/01/2010 - 09/30/2010

