

CLINTON COUNTY CENTRAL DISPATCH  
MONTHLY SERVICES REPORT  
October 2010

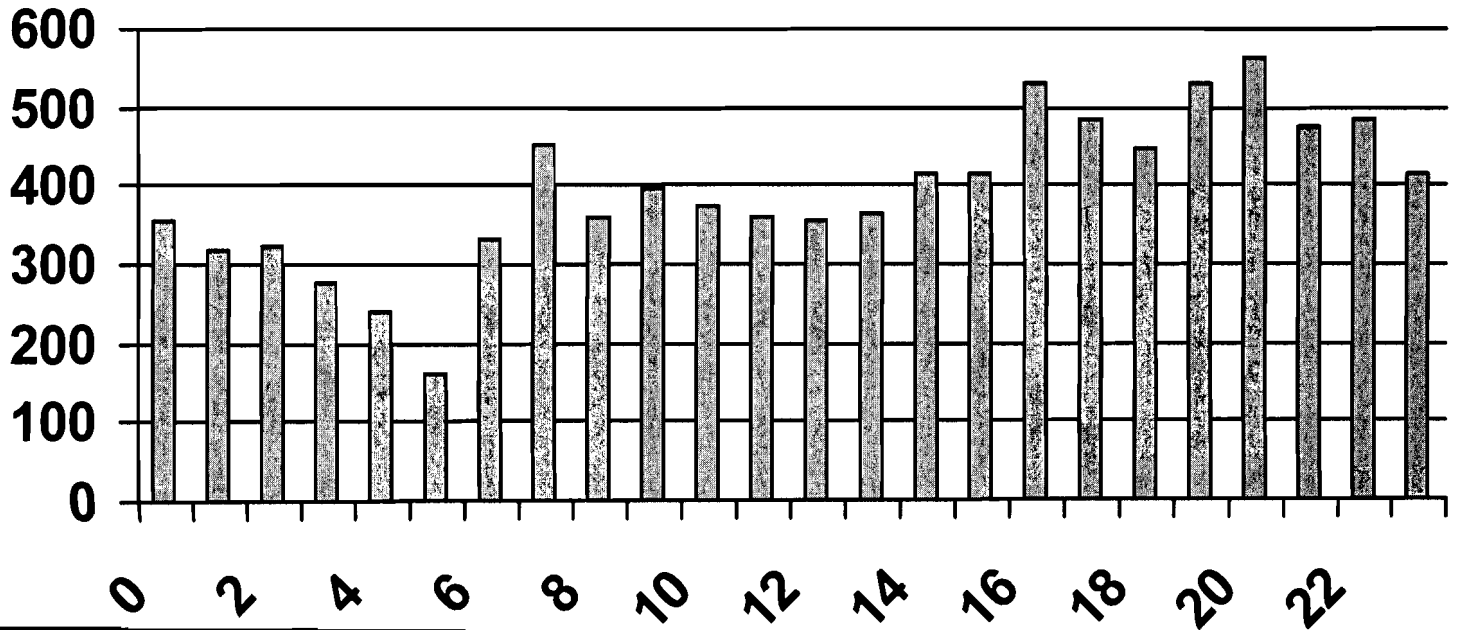
	THIS MONTH	MONTH LAST YEAR	% CHANGE IN M.T.D.	YEAR TO DATE	LAST YEAR TO DATE	% CHANGE IN Y.T.D.
A. REQUESTS FOR SERVICE						
1. Total Requests for Service	9105	9074	0.34%	86470	91286	-5.28%
2. Average per Day	294	293	0.34%	284	300	-5.28%
3. Average per Hour	12	12	0.34%	12	13	-5.28%
B. PATROL GENERATED DISPATCHES	4194	3594	16.69%	42561	35748	19.06%
C. SUMMARY CALLS FOR SERVICE						
1. Police Dispatches	2634	2932	-10.16%	23559	28307	-16.77%
2. Fire Dispatches	107	62	72.58%	794	754	5.31%
3. Medical First Responder Dispatches	230	206	11.65%	2150	2046	5.08%
4. Ambulance Dispatches	469	453	3.53%	4431	4474	-0.96%
5. Dispatch Completed	1306	1263	3.40%	12101	12619	0.00%
6. Activity Not Dispatched	834	851	-2.00%	9827	7965	23.38%
D. TOTAL CALLS FOR SERVICE	5580	5767	-3.24%	49321	52505	-6.06%
E. PERCENTAGE OF DISPATCHES						
1. Police Dispatches	47.20%	50.84%	-7.15%	47.77%	53.91%	-11.40%
2. Fire Dispatches	1.92%	1.08%	78.36%	1.61%	1.44%	12.10%
3. Medical First Responder Dispatches	4.12%	3.57%	15.39%	4.36%	3.90%	11.87%
4. Ambulance Dispatches	8.41%	7.86%	7.00%	8.98%	8.52%	5.43%
5. Dispatch Completed	23.41%	21.90%	6.87%	24.54%	24.03%	0.00%
6. Activity Not Dispatched	14.95%	14.76%	1.29%	19.92%	15.17%	31.34%
F. TOTAL DISPATCHES						
1. Grand Total All Dispatches	9774	9361	4.41%	17666	17321	1.99%
2. Ratio Requests to Dispatches	0.93	0.79	18.41%	0.93	23.35	-96.01%
G. MOBILE DATA SYSTEM						
1. Total Transactions	40676	43033	-5.48%	434965	444012	-2.04%

**OCTOBER 2010  
TELEPHONE CALL ACTIVITY**

TIME PERIOD	00:00 02:59	03:00 05:59	06:00 08:59	09:00 11:59	12:00 14:59	15:00 17:59	18:00 20:59	21:00 23:59	SUB TOTALS
INCOMING (aver. per hr.)	433 4.7	390 4.2	791 8.5	1038 11.2	1058 11.4	1212 13.0	1040 11.2	703 7.6	6665 71.7
OUTGOING (aver. per hr.)	140 1.5	167 1.8	265 2.8	451 4.8	380 4.1	351 3.8	392 4.2	294 3.2	2440 26.2
ALL CALLS AVER. PER HR AVER. PER DAY	573.0 6.2	557.0 6.0	1056.0 11.4	1489.0 16.0	1438.0 15.5	1563.0 16.8	1432.0 15.4	997.0 10.7	9105.0 12.2 293.7
<b>SOURCE:</b>		<b>THIS MONTH</b>	<b>MONTH LAST YR</b>	<b>% CHANGE IN M.T.D.</b>		<b>YEAR TO DATE</b>	<b>LAST YR TO DATE</b>	<b>% CHANGE IN Y.T.D.</b>	
911 & VoIP TRUNKS		1603	1651	-3%		15427	17423	-11%	
CELLULAR CALLS		1885	1687	12%		15723	15323	3%	
GENERAL CALLS		3177	3247	-2%		31728	33142	-4%	
<b>TOTAL</b>		<b>6665</b>	<b>6585</b>	<b>1%</b>		<b>62878</b>	<b>65888</b>	<b>-5%</b>	
% 911 & VoIP TRUNKS		24.1%	25.1%			24.5%	26.4%		
% CELLULAR CALLS		28.3%	25.6%			25.0%	23.3%		
% GENERAL CALLS		47.7%	49.3%			50.5%	50.3%		
<b>Y.T.D. EMERGENCY CALLS:</b>					<b>CELLULAR</b>	<b>50%</b>	<b>49%</b>		

\*\* VoIP CALLS: Increasing number of VoIP providers now sending their 911 calls through traditional 911 trunks.

**Calls For Service by Hour of Day**  
Date: 10/01/2010 - 10/31/2010



**Calls For Service by Day of Week**  
Date: 10/01/2010 - 10/31/2010

