

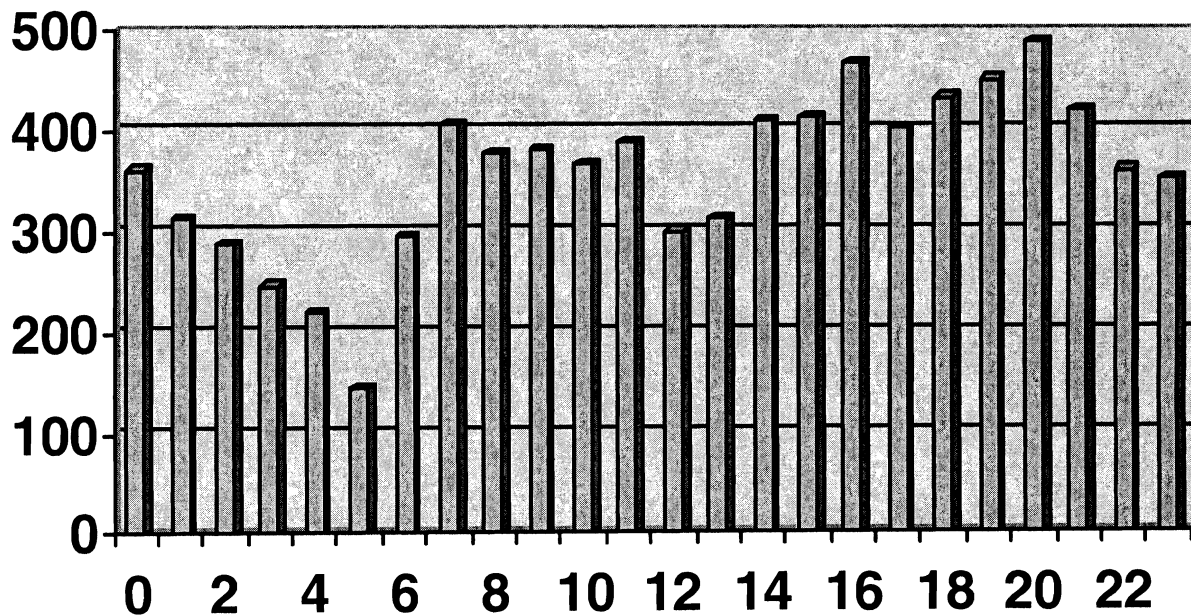
CLINTON COUNTY CENTRAL DISPATCH
MONTHLY SERVICES REPORT
November 2010

	THIS MONTH	MONTH LAST YEAR	% CHANGE IN M.T.D.	YEAR TO DATE	LAST YEAR TO DATE	% CHANGE IN Y.T.D.
A. REQUESTS FOR SERVICE						
1. Total Requests for Service	7686	8624	-10.88%	94156	118464	-20.52%
2. Average per Day	256	287	-10.88%	282	355	-20.52%
3. Average per Hour	11	12	-10.88%	12	15	-20.52%
B. PATROL GENERATED DISPATCHES	3933	3705	6.15%	46494	32919	41.24%
C. SUMMARY CALLS FOR SERVICE						
1. Police Dispatches	2323	2777	-16.35%	25882	30967	-16.42%
2. Fire Dispatches	77	70	10.00%	871	810	7.53%
3. Medical First Responder Dispatches	205	171	19.88%	2355	1917	22.85%
4. Ambulance Dispatches	438	420	4.29%	4869	4299	13.26%
5. Dispatch Completed	1127	1105	1.99%	13228	2000	0.00%
6. Activity Not Dispatched/Cancelled Cal	807	736	9.65%	10634	7095	49.88%
D. TOTAL CALLS FOR SERVICE	4977	5279	-5.72%	54298	46808	16.00%
E. PERCENTAGE OF DISPATCHES						
1. Police Dispatches	46.67%	52.60%	-11.27%	47.67%	66.16%	-27.95%
2. Fire Dispatches	1.55%	1.33%	16.67%	1.60%	1.73%	-7.30%
3. Medical First Responder Dispatches	4.12%	3.24%	27.16%	4.34%	4.10%	5.90%
4. Ambulance Dispatches	8.80%	7.96%	10.61%	8.97%	9.18%	-2.36%
5. Dispatch Completed	22.64%	20.93%	8.18%	24.36%	4.27%	0.00%
6. Activity Not Dispatched	16.21%	13.94%	16.30%	19.58%	15.16%	29.21%
F. TOTAL DISPATCHES						
1. Grand Total All Dispatches	8910	8984	-0.82%	18684	18345	1.85%
2. Ratio Requests to Dispatches	0.86	0.82	5.61%	0.86	30.30	-97.15%
G. MOBILE DATA SYSTEM						
1. Total Transactions	38612	42080	-8.24%	473577	603883	-21.58%

**NOVEMBER 2010
TELEPHONE CALL ACTIVITY**

TIME PERIOD	00:00 02:59	03:00 05:59	06:00 08:59	09:00 11:59	12:00 14:59	15:00 17:59	18:00 20:59	21:00 23:59	SUB TOTALS
INCOMING (aver. per hr.)	343 3.8	329 3.7	638 7.1	910 10.1	923 10.3	1022 11.4	961 10.7	510 5.7	5636 7.8
OUTGOING (aver. per hr.)	142 1.6	105 1.2	222 2.5	359 4.0	353 3.9	344 3.8	339 3.8	185 2.1	2049 2.8
ALL CALLS AVER. PER HR AVER. PER DAY	485.0 5.4	434.0 4.8	860.0 9.6	1269.0 14.1	1276.0 14.2	1366.0 15.2	1300.0 14.4	695.0 7.7	7685.0 10.7 256.2
		THIS MONTH	MONTH LAST YR	% CHANGE IN M.T.D.		YEAR TO DATE	LAST YR TO DATE	% CHANGE IN Y.T.D.	
SOURCE (INCOMING):									
911 & VoIP TRUNKS		1387	1473	-6%		16814	18896	-11%	
CELLULAR CALLS		1578	1678	-6%		17301	17001	2%	
GENERAL CALLS		2671	3039	-12%		34399	36181	-5%	
TOTAL		5636	6190	-9%		68514	72078	-5%	
% 911 & VoIP TRUNKS		24.6%	23.8%			24.5%	26.2%		
% CELLULAR CALLS		28.0%	27.1%			25.3%	23.6%		
% GENERAL CALLS		47.4%	49.1%			50.2%	50.2%		
Y.T.D. EMERGENCY CALLS:					CELLULAR	51%	50%		
VoIP CALLS: Increasing number of VoIP providers now sending their 911 calls through traditional 911 trunks.									

Calls For Service by Hour of Day Date: 11/01/2010 - 11/30/2010



Calls For Service by Day of Week
Date: 11/01/2010 - 11/30/2010

