

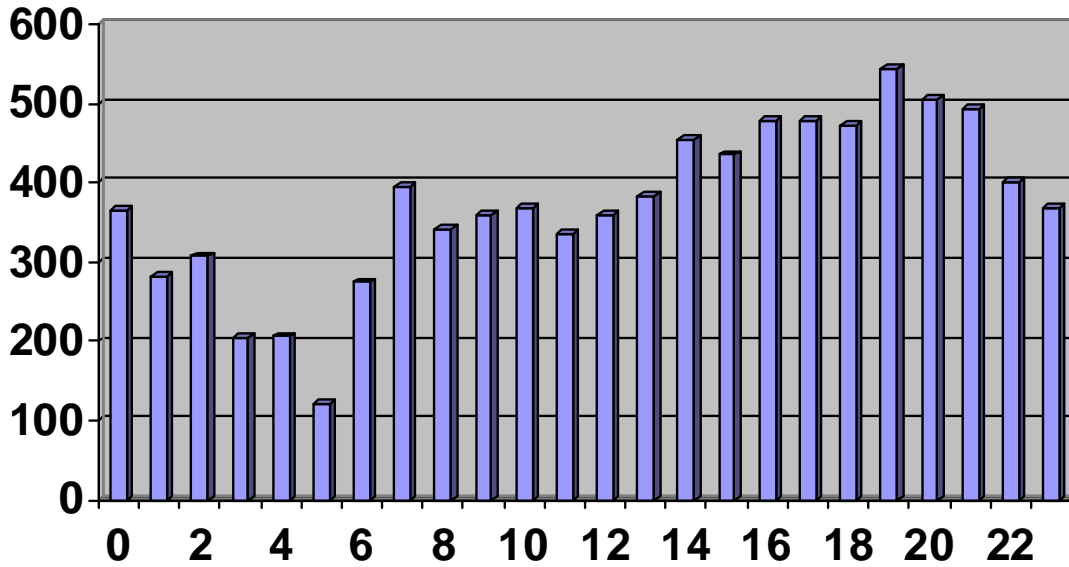
CLINTON COUNTY CENTRAL DISPATCH
MONTHLY SERVICES REPORT
September 2011

	THIS MONTH	MONTH LAST YEAR	% CHANGE IN M.T.D.	YEAR TO DATE	LAST YEAR TO DATE	% CHANGE IN Y.T.D.
A. REQUESTS FOR SERVICE						
1. Total Requests for Service	8184	8907	-8.12%	77039	77365	-0.42%
2. Average per Day	273	297	-8.12%	282	283	-0.42%
3. Average per Hour	11	12	-8.12%	12	12	-0.42%
B. PATROL GENERATED DISPATCHES	4373	3894	12.30%	38321	38367	-0.12%
C. SUMMARY CALLS FOR SERVICE						
1. Police Dispatches	2190	2365	-7.40%	20544	20925	-1.82%
2. Fire Dispatches	49	89	-44.94%	730	687	6.26%
3. Medical First Responder Dispatches	200	232	-13.79%	1931	1920	0.57%
4. Ambulance Dispatches	427	506	-15.61%	4154	3962	4.85%
5. Dispatch Completed	1203	1346	-10.62%	10823	10795	0.00%
6. Activity Not Dispatched	736	806	-8.68%	8311	8993	-7.58%
D. TOTAL CALLS FOR SERVICE	3602	3998	-9.90%	42912	43741	-1.90%
E. PERCENTAGE OF DISPATCHES						
1. Police Dispatches	60.80%	59.15%	2.78%	47.87%	47.84%	0.08%
2. Fire Dispatches	1.36%	2.23%	-38.89%	1.70%	1.57%	8.31%
3. Medical First Responder Dispatches	5.55%	5.80%	-4.32%	4.50%	4.39%	2.52%
4. Ambulance Dispatches	11.85%	12.66%	-6.34%	9.68%	9.06%	6.87%
5. Dispatch Completed	33.40%	33.67%	-0.80%	25.22%	24.68%	0.00%
6. Activity Not Dispatched	20.43%	20.16%	1.35%	19.37%	20.56%	-5.80%
F. TOTAL DISPATCHES						
1. Grand Total All Dispatches	7975	7892	1.05%	17976	17750	1.27%
2. Ratio Requests to Dispatches	1.03	1.11	-7.88%	1.03	19.79	-94.81%
G. MOBILE DATA SYSTEM						
1. Total Transactions	46300	38452	20.41%	384427	394289	-2.50%

**SEPTEMBER 2011
TELEPHONE CALL ACTIVITY**

TIME PERIOD	00:00 02:59	03:00 05:59	06:00 08:59	09:00 11:59	12:00 14:59	15:00 17:59	18:00 20:59	21:00 23:59	SUB TOTALS
INCOMING (aver. per hr.)	411 4.6	278 3.1	664 7.4	973 10.8	1013 11.3	1163 12.9	924 10.3	612 6.8	6038 8.4
OUTGOING (aver. per hr.)	189 2.1	102 1.1	195 2.2	389 4.3	336 3.7	386 4.3	337 3.7	212 2.4	2146 3.0
ALL CALLS AVER. PER HR AVER. PER DAY	600.0 6.7	380.0 4.2	859.0 9.5	1362.0 15.1	1349.0 15.0	1549.0 17.2	1261.0 14.0	824.0 9.2	8184.0 11.4 272.8
		THIS MONTH	MONTH LAST YR	% CHANGE IN M.T.D.		YEAR TO DATE	LAST YR TO DATE	% CHANGE IN Y.T.D.	
911 & VoIP TRUNKS		1484	1578	-6%		13322	13824	-4%	
CELLULAR CALLS		1648	1611	2%		13547	13838	-2%	
GENERAL CALLS		2906	3302	-12%		28169	28551	-1%	
TOTAL		6038	6491	-7%		55038	56213	-2%	
% 911 & VoIP TRUNKS		24.6%	24.3%			24.2%	24.6%	-2%	
% CELLULAR CALLS		27.3%	24.8%			24.6%	24.6%		
% GENERAL CALLS		48.1%	50.9%			51.2%	50.8%		
Y.T.D. EMERGENCY CALLS:					CELLULAR	50%	52%		
VoIP CALLS: Increasing number of VoIP providers now sending their 911 calls through traditional 911 trunks									

Calls For Service by Hour of Day
Date: 09/01/2011 - 09/30/2011 Time: 00:00 - 23:59



Calls For Service by Day of Week
Date: 09/01/2011 - 09/30/2011 Time: 00:00 - 23:59

