

1-84
Donald Snyder
Rt 1 3416 W. BANNER RD
St Johns, MI 48879 CCN

Trucker strike no problem yet, grocers say

By PETER W. BRONSON

Except for a few grapefruits, the nationwide strike by independent truckers has had almost no affect on local grocery stores, managers say.

"We were supposed to be getting some grapefruits from Florida, but they can't ship them because of the strike so we had to change our ad. Other than that, we haven't had any problems," Beck's Farm Market Manager Al Smith said.

Other St. Johns grocery store managers agreed. As of Friday, they said, the strike had not limited deliveries of produce, fresh meat or dairy items — freights hauled mainly by independent truckers.

"There's been no difference," said Ken Baese, assistant store director of Goff The Food Store. "We did have some calls as far as people concerned about certain produce items, but the produce that everybody buys every week to make their salads — lettuce, tomatoes, things like that — is still coming in."

A spokesman for the St. Johns Kroger store said deliveries had not been interrupted by the strike.

One of the reasons local stores have been largely unaffected by the strike, one manager explained, is that they receive most of their goods from their own warehouses, shipped by non-independent truckers.

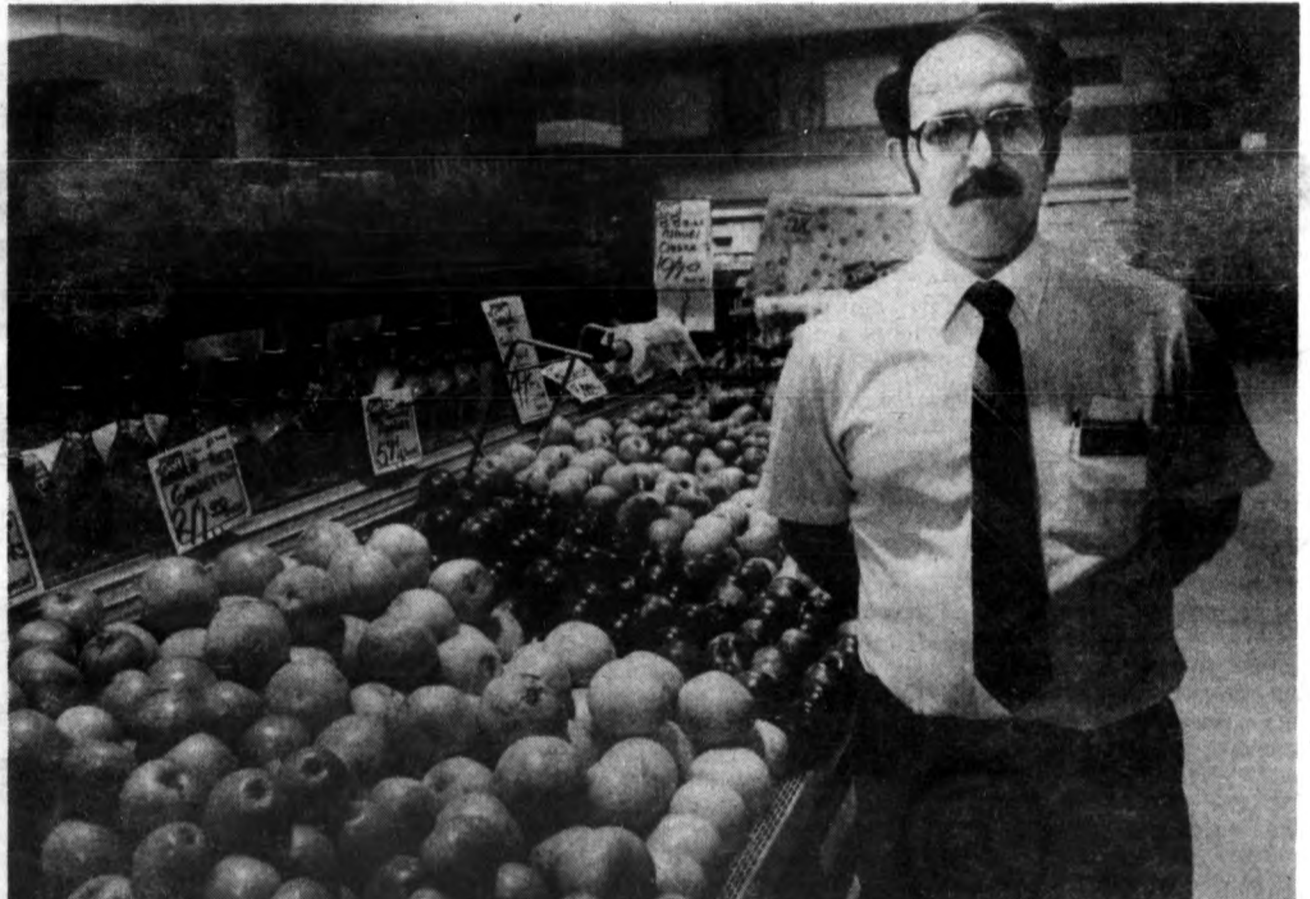
"Our drivers are part of our own fleet, and most of our stuff comes from our own warehouse. If there's a problem, we'll hear about it from the warehouse first," said Dan Henning, manager of Andy's IGA.

Becks and Goff both receive most of their grocery items from the same supplier, Spartan, which is headquartered in Grand Rapids.

"We're not hearing any bad vibes or anything about shortages from our warehouse," Baese said.

Truckers, on the other hand, have heard plenty of bad vibes about strike-related violence, and most are probably somewhat concerned, Smith said.

"I'm sure it sits in the back of their minds, but they don't say anything," he said.



Plenty of produce

Ken Baese of Goff The Food Store says truckers may be worried about violence, but shipments of meat, dairy products and fresh produce have not been affected yet. Other local store managers agreed. (Photo by Bob Stern)

'Cooling off' period expires today

Teachers and board to resume talks

By PETER W. BRONSON

A 90-day "cooling off" period which averted a St. Johns teacher strike Nov. 10 expires today, and both sides hope to resume bargaining soon.

No new date to resume contract negotiations was set as of Monday, but negotiators for teachers and the school board each have met separately with a state mediator to discuss starting a new round of talks.

"I've had a chance to rest and reflect a little. Now I'm looking forward to getting back to the table," said Mike Gehoski, chief negotiator for the St. Johns Education

Association (SJEA). "A lot of teachers would like a contract before the year is over."

Board negotiator George Johnson of the Michigan Association of School Boards said he, too, is ready for talks to resume, but refused further comment, citing a media freeze imposed by State Mediator E.J. Connors when the talks were adjourned Nov. 10.

Contract negotiations began more than a year ago, earlier than usual, in an effort to come to terms ahead of schedule.

But negotiations hit a snag when the school board proposed that teachers and other groups whose contracts

were up accept a wage freeze. Times are too tough to warrant teacher salary increases, they said.

After talks broke down altogether in September, mediation was sought. Teachers proposed a two-stage salary increase of two percent the first semester and five percent the second semester, then voted to strike if the board did not back down on its demand for a wage freeze.

The board still demands a wage freeze, Gehoski says, offering only step increases guaranteed under the last contract, which he says would benefit only half of the teachers.

The SJEA's latest proposal is for a two percent increase in the first semester and seven percent the second, Gehoski said. The proposal also would figure next year's step increases as if a nine percent raise had been granted this year, he says.

During the 90-day break, DeWitt teachers, who did strike last November, settled for a 5.5 percent step increase and a three percent raise this year, plus a 5.9 percent raise next year.

"They settled higher than what we even have on the table," Gehoski said.

Also during the cooling off period, SJEA President Gerry Congleton resigned, blasting the school board for lack of cooperation and a hostile, anti-teacher attitude. Former president Ted Slicer has replaced Congleton, and negotiations will not be affected, Gehoski said.

Gehoski said he hopes a two-year pact can be worked out, and speculated board negotiators are similarly inclined. "It's getting kind of late in the year. We've been playing with this year's contract for a year now, and if it's going to take this long again next time, maybe we should all go for two and combine them."

Other county districts which have settled include Bath, where teachers agreed to accept a 3.5 percent pay hike, and Pewamo-Westphalia, where teachers accepted a wage freeze.

Still negotiating are Ovid-Elsie, where mediation has been requested, and Fowler, where mediation has so far been unsuccessful.

UAW unemployed seek out work

By BUDDY MOOREHOUSE

Is there some work around the house that needs doing? Carpentry, plumbing, anything like that? Do you need a babysitter on occasion? How about someone to fix that big hole in the roof?

Whatever the job, a small army of unemployed workers would like to help. Jobless members of St. Johns Local 925 of the United Auto Workers have been doing part-time work since last October to help ease the financial crunch when unemployment benefits run out. Local 925 represents workers at Saylor-Beall, Schmelzer Corp. and Federal Mogul in St. Johns.

"The program has been going extremely well," said Local 925 Financial Secretary Doug Wooley, who helped start the program. "There are currently about 200 unemployed people in our local, out of 600 members, so back in October, I sent postcards to all of the unemployed asking if they would be willing to do any part-time or full-time work we could find for them."

"The response was excellent. People put down when they were available and what kind of work they were

best at and things like that, so when we got a job, we would know who to call. I wish there might have been a few more people sign up, but many of them said they were still drawing benefits, and they wanted to let the people whose benefits ran out do the work first."

The response from people needing work done was also good, Wooley said. "A lot of people might have done the work themselves," he said, "but then they thought, 'Well, why don't I hire someone unemployed to help.'"

The work has ranged from babysitting to moving furniture to cleaning out clogged drains, Wooley said, and the wages have been strictly negotiable. "We don't have any set rate," he said, "because you wouldn't want to pay a person the same amount for babysitting as you would for digging a ditch."

The work has been steady, with several calls a week coming in to Wooley. "I'm really looking forward to this spring," he said. "A lot of people need yard work done, and several farmers have said they're anxious to hire some of our workers to help on the farm."

If you have any work for the unemployed UAW members, call Wooley at 224-6261 or 224-8833.

Eagle woman is holdup victim

An armed robbery in Eagle was among the incidents reported by Clinton County law enforcement agencies during the past week.

• As she returned home from shopping Feb. 4, Irene Margaret Huhn, 13440 S. Wright Rd., Eagle, said she discovered two men wearing ski masks looting her home, Clinton County Sheriff's Deputies said. The men then forced her by gunpoint into the bedroom and tied her to a chair with electrical cord, deputies said. The two suspects then continued to loot the residence, escaping with jewelry, cash, two TV sets and several silver items, all valued at \$14,375, deputies said. Sheriff's deputies are now searching

for a 1977 Chevrolet Caprice, four-door, license plate FVW 936, which was Mrs. Huhn's car and was stolen by the suspects, deputies said.

• A breaking-and-entering Jan. 30 at the residence of Barry Gerard Kloeckner, 11111 S. Wright Rd., St. Johns netted burglars 63 racoon hides, 10 fox hides and three mink hides, total value \$950, Clinton County Sheriff's Deputies said. Kloeckner said someone broke into his house and stole the items while he was sleeping, deputies said.

• The Clinton County Sheriff's Department also made nine arrests of minors for possession on alcohol in a motor vehicle in the past week, deputies said.

names in the news

□ **Jim and Tomi Ann Schultheiss** of St. Johns will join a Traverse City caravan along US-27 for a ride to the Capitol to focus attention on World Marriage Day, proclaimed by Governor Jim Blanchard, Feb. 13. The Schultheisses, of 712 N. Clinton, will be joined by couples from Fowler and Pewamo, and **Ray and Billie Tarnosky**, also of St. Johns. Autos will be decorated like wedding cars in the caravan organized by Worldwide Marriage Encounter. Couples interested in participating can call Schultheiss, at 224-2540, or Tarnosky, 224-2495.

□ **Marcia Bretz** of 3765 Green Rd., St. Johns, hosted a classical and jazz piano recital at her studio recently, which included performances by winners in the 1982 National Piano Competition. Among the winning performers were **Michelle McCafferty, Christine Sabo, Steven McConnell, Teresa Buckwalter, Angelina Mox, Margaret Antcliff, Christine Ebert, Melissa DeWitt, Janice Kresge, Robert Sabo, and Kim McKean**. Works by Gershwin, Mozart, Scott Joplin and contemporary jazz writer Lee Evans were performed.

There are over 100 changes in this year's tax laws and forms.

H&R Block preparers have received special training to help you this year. Did you know there are two different short forms, increased deductions for an IRA, and increased child care credits ... and many more changes? We've done our homework on the new tax laws, so you don't have to.



H&R BLOCK

The new tax laws. This year's number one reason to go to H&R Block.

208 N. Clinton - St. Johns

Open 9 a.m.-8 p.m. Weekdays, 9-5 Sat., Phone 224-4051

OPEN TODAY - APPOINTMENTS AVAILABLE

THE CLINTON COUNTY NEWS

Published Each Thursday By

Lansing Suburban

Newspaper Network, Inc.

219 S. Bridge Street

P.O. Box 70

Grand Ledge, MI 48837

A Division of Suburban

Communications Corporation

The Clinton County News Office

117 E. Walker Street

St. Johns, Mich. 48879

(517) 224-2361

Second Class Postage Paid

U.S.P.O. St. Johns, MI 48879

Subscription Rates

25¢ Single Copy

\$12.00 Annual in Michigan

\$20.00 Outside Michigan

\$6.50 Six Months in Michigan

\$12.50 Six Months Outside Michigan

\$8.50 Senior Citizen - annual

in Michigan

\$14.00 Outside Michigan

Newspaper in Education-Library Rate \$6.50

USPS 1185

POLICY STATEMENT: All advertising published in the Lansing Suburban Newspaper Network, Inc. is subject to the conditions stated in the applicable rate card, copies of which are available from the Advertising Department, Lansing Suburban Newspaper Network, Inc., 423 Albert Street, P.O. Box 1510, East Lansing, MI 48823-6510, (517) 337-1361. The Lansing Suburban Newspaper Network, Inc. reserves the right not to accept an advertiser's order. The Lansing Suburban Newspaper Network, Inc. ad-takers have no authority to bind this newspaper and only publication of an advertisement shall constitute final acceptance of the advertiser's order.

Attention:

ALL CUSTOMERS OF MUIR'S DRUG STORE IN DeWITT

MUIR DRUGS WILL REMAIN IN BUSINESS

in COUNTRY MEADOWS VILLAGE CENTER

Our business has been good in the Country Meadows Village Center; in fact, it has been steadily growing. The residents of DeWitt, Bath, St. Johns, and Clinton County have been very good to us, and we fully intend to serve our many valued customers with all their drug store needs, for many years to come. And we remain committed to improving our service to you.

COMING SOON! New Convenience Food Dept.

To assist those people who will be inconvenienced by the closing of the Village Center I.G.A. Store, Muir's will be adding a new Convenience Food Department. We'll be carrying bread, milk, ice cream, and other foods to help you fill in between your major grocery shopping trips.

We Carry All
Your Favorite
**LIQUOR,
BEER, WINE,
MIXES and
SNACKS**



**MUIR'S WELL-STOCKED
HARDWARE
DEPARTMENT**

Carries all the tools and gadgets you need for do-it-yourself projects - and we're open on Sundays!

MUIR

Drug Stores

Country Meadows Village Center, 13157 1/2 Shavey Rd., DeWitt

Barnyard boogies with 'beep-beep' beat

By PEGGY ALLEN and PETER W. BRONSON

There's a new sound being heard on the farm these days. Along with an "oink, oink" here, and a "cluck, cluck" there, is the "beep-beep" everywhere of farm computers.

"Home computers are just beginning to catch on," said Roberta Webber of Clinton County's Cooperative Extension Service. "But it's growing all the time. Many have been using computer feeding devices, especially on dairy farms."

Special computer-activated devices can allow more efficient feeding and perform tasks farmers couldn't find time for in the past, she explained — like giving some little pigs feed when others get none. "Farmers just can't feed one cow more than the rest four times a day when it's in a pen with a hundred or so others."

But while such feeding systems start in the \$10,000 pice range, less expensive home computers, priced from about \$2,000 and up, are expected by many to become just as important to modern farmers as their pickup trucks.

Manufacturers of computer software now sell programs tailored to the special needs of the farmer, and subscription services offer many programs to help farmers milk the most from their computer.

Well known as a method of streamlining bookkeeping and cutting costs, computers are also purchased by many farmers for use as an educational tool, Mrs. Webber said.

"This is such a strong family-oriented county, I've

heard many say they are buying a computer so the children can learn on it."

One such farm family is the Schneiders of Fowler. Louis and Karen Schnieder decided to buy a home computer last December, not as a Christmas present, but as a business investment, Mrs. Schneider says.

"We hope to keep all of our farm records on computer — payroll, milk volume, individual cows — everything. I understand they can be really good for feed rationing, for example."

And it may help with their children's education, she pointed out. "It really appears to be the thing of the

Ready, set... compute

Want to get a closer look at computers on the hoof? Enrollment is still available for a hands-on computer workshop to be held Thursday and Friday, Feb. 10 and 11, at the Cooperative Extension office, 306 Elm, St. Johns, from 10 a.m. to 3 p.m. Designed just for farmers, the program costs \$55 per person.

future. We've got kids in grade school and high school, and this is going to be part of their lives."

Already the Schneiders' 16-year-old son has become the computer expert of the family, Mrs. Schneider said, boning up on software and hardware through a course at a local high school.

Mrs. Schneider is also taking a computer course, and she's not alone, Mrs. Webber said.

"Over half of the people enrolled in our workshops are

farm wives," she said. "Thanks to computers, more farm wives seem to be taking over recordkeeping responsibility."

Interest in such workshops, along with computer sales, is growing fast. A seminar on microcomputers in agriculture held recently at MSU drew more than twice the number of participants expected. And a two-day workshop in Clinton County last year attracted more than 30 farmers, Mrs. Webber said.

She explained that the Cooperative Extension office offers several services to farmers through a national computer hook-up known as Tel-Plan. By plugging into one of hundreds of programs, local farmers can obtain anything from a yearly income projection to a detailed breakdown of feed requirements for dairy cattle.

"We've got quite a few in the Tel-Plan," Mrs. Webber said. "For a nominal fee, we can put one of the most sophisticated computer programs available to farmers right at their finger tips."

But before dashing out to buy a new home computer, Mrs. Webber said, a few words of caution are in order. "A lot of people have purchased home computers but are not making their investment back yet. It takes time, and some of these programs are just beginning to work."

Also, a computer won't make cow or sow management smooth as silk overnight, she said. "If you don't do a good job of keeping records now, a computer is not going to do it for you. But if you're a good manager, it makes keeping records more fun. Computers can make good managers better managers."

Five more hazardous bridges closed in county

By PETER W. BRONSON

Those fond of crossing their bridges when they come to them would do well to avoid six spots in Clinton County.

County crews finished blocking off five bridges Monday, following county road commission orders to close them the week before. Along with a bridge which collapsed last month when it was struck by a pickup, the latest closings bring Clinton County's list of off-limits bridges to an even half-dozen.

The latest bridges closed are located on:

- Tallman Road in Dallas Township, south of Parks Road;
 - Maple Road, west of Maple Rapids, in Essex Township;
 - Kinley Road, west of Lowell Road, in Essex Township;
 - Centerline Road, east of DeWitt Road, in Bingham Township;
 - Bauer Road, between Looking Glass and Looking Glass Brook roads, in Watertown Township.
- A bridge on Babcock Road in Victor Township collaps-

ed Jan. 6 when it was struck by a pickup truck.

"All of these bridges had two-ton weight limits on them since our last analysis three years ago," Road Commission Superintendent & Manager Robert Ancel said. "The last five were closed as a result of our latest analysis, just completed by BCA engineering."

Old age and the elements have deteriorated all of the closed bridges seriously, making them unsafe to cross, he said. Most of the bridges are about 80, having been erected in the early 1900s, he said. The oldest, perhaps one of the most ancient in the state, is the Bauer Road bridge, built in 1880.

"They said that bridge is one of the oldest they've ever seen," Ancel said of the Southhaven engineering firm's report.

However, there's good news for those who have become accustomed to crossing two of the closed bridges. Ancel said the bridges on Kinley and Centerline roads might be reopened as soon as next summer.

"If we can work out some financing from the townships, we can get them back in shape. The abutments are okay, they just need new decks."



In sharp contrast to last year, when road crews worked around the clock to clear tons of blowing, drifting snow, Clinton County's snowplow drivers have been out only two or three times and have used only half as much salt so far this year, road commission manager Bob Ancel says.

First Quality Flower Prints



1/2 Price with this ad

offer good thru Feb. 14

Hand-screened wall prints

MARUSHKA
OUTLET STORE

7300 W. Saginaw, Lansing
2 miles west of Lansing Mall, next to SeaHawk
Ph. 321-2070

Hours: Mon. thru Sat. 10-5:30



DAWN'S GONE NUTS!

NUTTY DONUTS



DAWN DONUTS

ONLY **15¢** ea.

LIMIT 1 DOZEN CARRY-OUT ONLY
NO COUPONS NEEDED
AT ALL PARTICIPATING DAWN DONUTS



Buddy Moorehouse

Questions and answers

How's your winter been so far?

Oh, not bad. No snow. No shoveling. I'm a happy man. I only get depressed when I see one of those Stereo Shoppe commercials on TV. You know, the ones with his wife, Pet. How can human beings think of something that stupid?

You're one to talk. Listen, what about the local sports scene this winter?

What about it?

You tell me. You're the one who's supposed to know.

What do you want to know?

Well, who's got the best basketball team in the county?

Ah, an interesting question. I would be tempted to say the Pirates of P-W. When they're hot, like they were against DeWitt and Fowler, they're unbeatable. But I still don't know if they're the best. Aside from that game against P-W, DeWitt has looked awesome, too. Both of them should be ranked in the state.

Come on, make up your mind.

It's too hard a question. O-E has the best first-half team, but those guys have made a habit of blowing big leads. If they can play the whole game like the do in the first half, the Marauders might be the best in the county. And then there's St. Johns, the best second-half team around. If they didn't always fall behind by so many at the beginning of the game, the Wings might be the best. And then there's Fowler. If their shooters start hitting...

In other words, you have no idea who has the best basketball team in the county, right?

I guess not.

looking ahead

DUE TO REMODELING, the DeWitt Public Library will not be open until Feb. 15 at 9 a.m.

A PROGRAM CALLED "TARGET FUEL ASSISTANCE" is designed to help people 60 and over with their heating fuel bills. Eligibility for assistance depends on gross income. For a one-person family, gross income must not exceed \$5,850. For a two-person family, the limit is \$7,775. For more information, call 224-7837.

COPIES OF THE REVISED DeWitt Development Plan are now available at the clerk's office in City Hall. A public hearing to hear comments on the new plan is scheduled for Feb. 16 at 7:30 p.m. at City Hall.

REP. GARY RANDALL WILL be at the St. Johns High School library March 1 at 7:30 p.m. to discuss student transportation. The event is sponsored by Bus Us Sensibly and the East Olive PTO.

A COMMUNICATION AND PARENTING SKILLS workshop will be held the following times and places: Tuesdays, Feb. 15-April 12 at Rodney B. Wilson Jr. High, St. Johns from 7-9 p.m.; Tuesdays, Feb. 22-April 19 at Bath Elementary or Jr. High from 7-9 p.m.; Thursdays, Feb. 24-April 21 at First Congregational Church, 100 Maple, St. Johns from 9-11 a.m.; Wednesdays, Feb. 23-April 20 at Leonard Elementary in Ovid from 7-9 p.m.; Wednesdays, Feb. 23-April 10 at Most Holy Trinity Church in Fowler from 7-9 p.m. For more information, call 224-6228.

THE ST. JOHNS HIGH SCHOOL THEATRE DEPARTMENT will be presenting "You're a Good Man, Charlie Brown" in a dinner-theatre production Feb. 25-26. Tickets, which include a formal dinner, are \$12. Call 224-9341 ext. 114 or stop by the high school to make reservations.

THE EXPECTANT PARENT ORGANIZATION will sponsor a ten-week series of childbirth preparation classes beginning Thursday, March 10 from 7:30-9:30 p.m. at Clinton Memorial Hospital. The fee is \$40 per couple. Call 337-7365 to register.

THE BATH SHOOTIN' STARS Square Dance Club will meet Feb. 12 from 8-11 p.m. at Bath High School for a Sweetheart's Delight dance.

How about the best player?

Another hard one. I guess I would say Steve Sontich of DeWitt, at least for right now. He probably has the best chance among this year's seniors of playing big-time college ball. He's got the size and the talent. He could really blossom into a great college player.

Good. Any others?

Sure. Steve Gonzales of St. Johns might be the best all-around player in the county — scoring, passing, steals — he does all that stuff. If he goes to Alma College, like he's planning, he should fit in fine. Another one is Jeff Spitzley of P-W. He's so aggressive and he's got a ton a ability. If he were just two inches taller, he could play forward anywhere. Rick Arens of P-W could play in college, too. He just needs a little more meat on him. Sam Dalman of DeWitt and Pete Hurst of O-E would also make good college players.

Those are all seniors. Who's the best young player?

I'd say Paul Horak of O-E is the best junior, but I really doubt he's just a junior. With that moustache of his, he looks like he's in his 30's. And there's no question that John Keenoy of St. Johns is the best sophomore. He improves in leaps and bounds with every game.

Alright, enough about basketball. Who's got the best volleyball team?

Well, St. Johns won the county tournament, but P-W beat the Wings in a tourney in Lansing. You decide.

No thanks. What do you think about Michigan State signing Tim Moore?

Let me tell you, this George Perles guy has me worried. Just who does he think he is, signing all these blue-chippers from the state? He doesn't seem to realize the way things are done around here. Bo gets to pick the ones he wants and leaves the rest for MSU. That system has always worked just fine in the past, and I see no reason to change it now.

Sounds like sour grapes to me. How about Jim Seegraves going to Western Michigan?

He has at least as much talent as any of the top players in the MAC. Don't be surprised if he turns out to be a four-year starter.

I won't. Here's one — who has the best pep band?

Ovid-Elsie might. The drums in that band are great. They really get the crowd fired-up, and I guess that's what a pep band is supposed to do. Any more questions?

Yeah. What's your real name? Nobody names a kid Buddy.

My real name is Henry.

No, seriously.

It is.

Where did Buddy come from?

Well, when you're a little kid who wears horn-rimmed glasses and your name is Henry, you either learn how to fight or you change your name. I changed my name.

THE ST. JOHNS HIGH SCHOOL Music Department will present its annual "Chamber Music Concert" Feb. 10 at 7 p.m. in the First Congregational Church (across from the Post Office) in St. Johns. The Chorales will perform, featuring a vocal-jazz selection with Jeff Dietrich on drums. The String Quartet will perform the first movement of Beethoven's Quartet, Opus 18, No. 4. There is no admission charge.

THE MAPLE TWIRLERS' SWEETHEART SWING will be held Feb. 11 from 8-11 p.m. at the St. Johns Municipal Building in St. Johns. Wendell Law will be the caller.

THE KUNTRY KUZINS SQUARE DANCE CLUB is having a dance Feb. 18 at South Elm School in Ithaca starting at 8 p.m. Roger Nichols will be the caller.

PARENTS ANONYMOUS meets every Wednesday from 1-3 at the Congregational Church, 100 S. Maple, St. Johns. Babysitting is provided. Call 224-6729 or 224-6134 for more information.

A VALENTINE BENEFIT DANCE to raise money for Clinton County's Hospice program and a new Jaws of Life for St. Johns will be hosted at St. Joseph's gym in St. Johns Feb. 12. Doors open at 8 p.m., with music by the Royal Ramblers. The charge is \$6 per person. Set-ups and snacks are furnished. For more information, call 224-7391 or 224-4364.

A SPAGHETTI DINNER will be hosted by Boy Scout Troop 71 Feb. 19 at the First United Methodist Church, 200 E. State St., St. Johns, from 4:30 to 7:30 p.m. Tickets are available from scouts, their leaders or the church office. Adults, \$3; age 12-6, \$2; under 5, free; family, \$10; senior citizens, \$2. For more information, call Gordon Shipley, 224-4792.

OVID'S ELDERLY can now benefit from the Homebound Meals program offered by Clinton Memorial Hospital through the Tri-County Office on Aging. Two meals a day can be delivered at no cost to those determined to be home bound. For more information, call 224-6881.

SIGN UP FOR COMPUTER AWARENESS CLASSES for anyone age 7 and up, offered by Community Resource Volunteers. Stop at the CRV office above Parr's Drug Store in St. Johns, or call 224-8285.

FOOD AND CLOTHING for needy unemployed or poverty level persons can be donated at the Michigan Rehabilitation Services office, 910 Southland, Lansing. Those needing food or clothing can call 373-1955.

The Clinton County News Editorial Page

Serving Clinton County

Peter W. Bronson
Editor

Jay Jackson
Managing Editor



A subsidiary of
Suburban Communications Corp.
Member of Michigan Press Association

117 E. Walker St.
St. Johns, Mich
48879

224-2361

Letters

Albosta's tan expensive

To the editor:

No wonder people are so angry these days with elected officials, especially those in Washington! With unemployment in double digits and the budget deeply in the red, our congressmen recently voted to raise their own pay — again!

Yet another example of irresponsibility came to light the other day with the revelation that Congressman Donald Albosta and five others took an 11-day trip at the taxpayers' expense to Venezuela, Uruguay, Brazil and the Virgin Islands.

Mr. Albosta defends his costly junket as a "working trip." He was "examining" the mass transit system in Caracas, "studying" the use of gasohol in Brazil, and "inspecting" an airport expansion project in the Virgin Islands.

Come on now, Don. That's what they all say. Congressmen for years have tried to justify their foreign travels to "oversee" projects in which they have little, if any, personal expertise, but it just doesn't wash. The people of the 10th District helped to pay for the congressman's trip, but it is highly unlikely that they will reap any benefits from it.

If Congress really believes it is necessary to study Venezuelan transit, Brazilian gasohol, or airports in the Virgin Islands, then it should send experienced technicians who can come back with more than just an expensive suntan.

Dennis Starnier, vice-chair
10th District Republican Committee
Midland

Busing laws dangerous

To the editor:

A good pupil transportation service for our children in both public and private schools needs to be preserved. The state of Michigan has lowered its subsidy level from 75 percent to only approximately 35 percent of local school districts' cost of bus transportation.

Currently, transportation services for both public and private school students is an optional, not a required service. Revenue declines have forced many school districts to reduce or even eliminate bus service. Because state law prohibits voluntary subsidies from parents or other groups and prohibits restriction of funds for transportation use only, local school boards are denied the means necessary to adjust to declining state revenues and to stop the pirating of funds away from a service for our children by other selfish interest groups. A bus transportation service for our children is facing serious threats to its existence.

Some other deficiencies in Michigan law that are detrimental to the health and welfare of children are the following: no limit on how many children may ride a school bus; no limit on the length of bus routes; no limit on how long children must wait for overdue buses; no limit on how far children may be required to walk to a bus stop; and no allowances for reimbursement off main routes of travel when conditions exist that clearly endanger the physical or mental health or life of a child.

The public is invited to an open meeting at the St. Johns High School library Tuesday, March 1, 7:30 p.m., to discuss these and other transportation-related issues with Representative Gary Randall and the organizers of BUS (Bus Us Sensibly). Let's stop any further abuse of our children. Our children need your voice to speak up for them.

Alan and Mary Thunell
DeWitt

We would like to print your opinions and comments in our Letters to the Editor column. Letters must be signed originals, and should include full name, address and phone number. We reserve the right to edit letters for clarity and brevity. Send your letter, care of this newspaper, to 117 E. Walker St., St. Johns, 48879.

Parents launch busing petition

By PETER W. BRONSON

Frustrated by their school board's refusal to change busing policy, some St. Johns area parents have begun a petition drive to force the board to reconsider.

"When the board turned us down on our proposal, that's when we decided this board doesn't care about kids," said Mary Thunell, co-chair of BUS (Bus Us Sensibly).

Mrs. Thunell and her husband, Allen, who is chairman of the petition drive, told board members last fall that they think the present busing policy is unsafe. They and other parents have urged the board to return to a door-to-door policy for some students, if not all.

"We would like the board to consider door-to-door service for some specific students, in cases where mental or physical health is jeopardized," Mrs. Thunell said. "Then we would like to see them adopt a door-to-door policy for elementary students, then junior and senior high students."

Citing students who suffer from asthma or other problems which make long winter walks risky, she said recommendations by doctors and parents pleas have been ignored.

The school board took a look at busing policy last October, when a study, prompted by complaints, was conducted by board member Peter Apostol.

Apostol and other board members told angry parents at a meeting Oct. 6 that the system cannot afford a door-to-door policy, and that no stops were "really dangerous."

"We can't make a policy for each person," Apostol said during the October meeting. "We have a look at the policy as a whole."

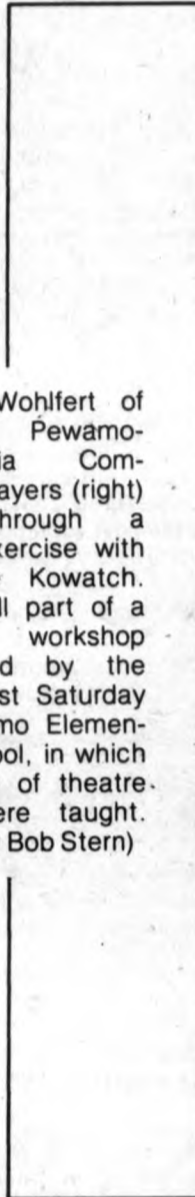
The board abandoned door-to-door busing three years ago, and adopted a policy which requires students to walk no more than one-half mile to bus stops.

Mrs. Thunell said it is too late to force a change in the policy this year, but hopes if enough signatures are obtained changes can be made in time for the 1983-84 school year.

The Thunells of 10451 Bond Rd., DeWitt, parents of St. Johns students, also plan a meeting for interested parents with 88th District State Representative Gary Randall, R-Alma, in an effort to explore possible changes in state school busing laws.

"We hope to get a state law which would address children as specific cases," she said. The meeting will be held March 1, 7:30 p.m., in the St. Johns High School library, sponsored by BUS and the East Olive Parent-Teacher Organization, she said.

"With all of the state cuts, who's speaking for the kids?" she asked. "The teachers have their unions, the school boards have their associations, but no one is speaking out for the kids."



Jerry Wohlfert of the Pewamo-Westphalia Community Players (right) goes through a dance exercise with Germaine Kowatch. It was all part of a theatre workshop conducted by the PWCP last Saturday at Pewamo Elementary School, in which a variety of theatre skills were taught. (Photo by Bob Stern)



names in the news

□ Wayne I. Ball, son of Mr. and Mrs. Wayne Ball of Maple Rapids, recently graduated from Y.N. School and is reporting for duty aboard the USS Mohongahela. Ball's wife is the former Miss Marie Robolo of St. Johns and with their daughter, Jessica, lives in St. Johns.



□ William A. Buschle, division manager of General Telephone's Central Division, has announced a new "self-service" Phone Mart Customer Service booth has been opened in Clinton Bank & Trust, 200 N. Clinton, St. Johns. The booth is a self-service showroom, telephone exchange and pick-up and delivery point, and will save local customers the time and expense of traveling to a branch office, a company spokesman says.

□ State Senator Alan Cropsey has opened an office at the State Capitol in Lansing. "We want to set a precedent of being available right away so we can begin tapping the public for ideas in setting our agenda for 1983," he said. Cropsey can be reached by phone at 373-2420 or by mail at: Michigan State Senate, Room 403, State Capitol, Lansing, 48909. With his family present, Cropsey was sworn in by Justice James Brickley.



A new member of the family

Engine 34 is now part of the arsenal of the St. Johns Fire Department after being fitted with all the necessary equipment. Taking the new truck through a workout are (front, from left) Dennis Sisson, Elon Hufnagel, Charlie Bensinger, Fire Chief Clare Maier and Dick Cornwall; (standing in back) Charlie Heiler. (Photo by Buddy Moorehouse)

□ Brent A. Larsen has been named community relations and development coordinator at Carson City Hospital. Larsen is a graduate of Western Michigan University and was executive director of CFC-TV, a cable television and consulting firm in Grand Rapids.



Brent A. Larsen

□ Michael Idzkowski, of East Lansing, has been appointed advertising and public relations manager for Clinton Bank & Trust Co.

□ Cheryl Schafer of Fowler and Tammy Willett of St. Johns are busy practicing for the Alma College Kiltie Band's playing tour of Florida during Winter Term Break, Feb. 26-March 6. Miss Schafer plays French horn and is a 1979 graduate of Carson City-Crystal High School. A senior biology major, she is the daughter of William and Jean Schafer of Rt. 1 Maple Rapids Rd., Maple Rapids. Miss Willett, a 1981 graduate of St. Johns High School, is a sophomore, plays clarinet, and is the daughter of William and Ann Willett of 305 Cass, St. Johns.



Fowler's Dave Koenigsnecht (left) races to the ball along with Portland St. Pats' Terry Sines (right), who isn't letting a fallen Eagle player slow him down. Fowler staged a fourth-quarter rally which downed the Shamrocks, leaving both teams in a second-place tie in the CMAC. (Photo by Bob Stern)

Fowler comeback tops St. Pats

By BUDDY MOOREHOUSE

Feb. 5 — Fowler 53, Portland St. Pats 49: Meet the Fowler Eagles. Short, quick and deadly from the perimeter. Also inconsistent. Fabulous one game (like when they beat Lansing Catholic Central), dreadful the next (like when they lost to P-W.)

Last Saturday, it was time to be fabulous. In the showdown for second place in the Central Michigan Athletic Conference, Fowler used excellent free-throw shooting down the stretch to top Portland St. Pats, leaving each team at 4-2 in the league. P-W sits atop the pile at 6-0.

"I knew this would be a good game," Fowler coach De'ny Smith said. "We had two really good practices before we played St. Pats, so I felt confident. The guys were finally over the loss to P-W."

The Eagles trailed by 13 at the end of three quarters, but that's when the Fowler sharpshooters went to work. Smith's squad pulled St. Pats out of its zone and began to fight back. The Shamrocks started to foul, but Marty Hamilton and Glen Feldpausch combined to hit nine of 10 free throws to

ice the win. Fowler outscored the home team, 21-8, in the final period.

"We really showed a lot of determination and character," Smith said. "It was an excellent fourth quarter."

A big surprise was that the much-smaller Eagles outrebounded the giant Shamrocks, 27-20. Fowler's 5-11 center, Tom Simon, pulled down 14 rebounds to lead the way. "Tom was outstanding," Smith said. "He boxed out so well, and they just couldn't get any rebounds from him."

St. Pats coach Tony Trierweiler attributed the loss to too many mistakes. "The critical factor was our inability to handle the press," he said. "I don't really think the rebounding hurt us, but we made too many turnovers."

Hamilton led the way in scoring for Fowler with 18 points — 12 of them coming in the fourth quarter. Feldpausch added 13 for the winners. Terry Sines scored 21 for the Shamrocks.

The Eagles should have a breather tonight when they play host to last-place Laingsburg.

Clinton County

Sports

Redwing spikers pick up two wins

With senior Sue Pearsall leading the way, the St. Johns volleyball squad pounded Alma on Jan. 31, 15-12, 15-8. Pearsall had 11 service points and eight spikes, while Lisa Henning added seven sets and Chris Warren seven spikes.

"The first match was a little close, but overall the team played good volleyball," Redwing coach Bernie Fox said. "Sue Pearsall served well and overall, she did a fine job."

Prior to that win, the Redwings competed in the Lansing Community College tournament on Jan. 29, finishing with a 4-6 overall record. St. Johns swept Lowell (15-5, 15-13) and DeWitt (15-3, 15-5), but lost to P-W (9-15, 3-15), Pinckney (14-16, 4-15) and Lansing Sexton (9-15, 3-15).

"We didn't play well," Fox said. "But we saw some good volleyball action, some fine teams and gained some experience."

On Jan. 25, St. Johns bounced back to beat Corunna, 2-15, 15-12, 15-12. Lisa Mazzolini had nine service points, while Susie Casler racked up 22 sets. Pearsall had 11 spikes and Warren added nine blocks.

Marauders roll to two victories

By BUDDY MOOREHOUSE

Feb. 8 — Ovid-Elsie 63, Bullock Creek 47: "It wasn't really much of a game," O-E coach Bob Foreback said. "The starters just played the first quarter and about three minutes of the third. Bullock Creek just isn't very good this year."

The Marauders, who upped their record to 8-6, grabbed the lead at the outset and held on the whole way, led by Wade Kiosk's 15 points and eight rebounds. Pete Hurst added eight points, while Mark St. Pierre, Kevin Angel and John Kusnier each tossed in seven.

"We've had Bullock Creek on the schedule twice a year since 1966," Foreback said, "but this is the last year we'll do that. It just isn't much of a game anymore, and it's a long way to drive — 45 miles each way."

Feb. 4 — Ovid-Elsie 56, Alma 43: "I didn't think it would be that good of a game," O-E coach Bob Foreback said, "since we beat them so bad last time."

Foreback proved to be correct last Friday night, when neither team played textbook basketball. The exception was the Marauders' Pete Hurst, who hit for 22 points, the only O-E player to score in double figures.

"That was his second good game in a row," Foreback said. Hurst scored 23 in the win over Pewam-Westphalia last Tuesday.

Paul Horak, who sat out the P-W game with a touch of the flu, led the Marauder rebounders with five. O-E was also 20-of-28 at the free-throw line. "That's where I think we won the game," Foreback said.

'Wings toppled by the Panthers

By BUDDY MOOREHOUSE

Feb. 8 — DeWitt 76, St. Johns 63: Welcome to the Sam and Steve Show. Starring Mr. Inside, Steve Sontich, and Mr. Outside, Sam Dalman.

Sontich, DeWitt's 6-6 center, hit for 28 points Tuesday night while Dalman tossed in 24 to help the Panthers make it two in a row over St. Johns this year. Joe Wheelton added 11 for the winners.

As usual, St. Johns fell behind early in the game, and as usual, St. Johns caught up. After falling back by eight in the first quarter, the Redwings fought back to tie the score in the second before trailing at the half, 35-33.

The game turned into a track meet in the second half, though, with DeWitt picking up numerous baskets on fast breaks. The Panthers outscored the visiting Redwings in the third quarter, 19-9, to put the game out of reach.

Sophomore John Keenoy led St. Johns with 11 points, while Steve Gonzales, who is recovering from a skiing accident suffered last weekend, added 10 points.

DeWitt beats Eaton Rapids

Feb. 4 — DeWitt 88, Eaton Rapids 77: How's this for a big-game set-up? DeWitt and Okemos, both tied for the Capital Circuit lead at 5-1. Both ranked in the state polls, DeWitt 19th by UPI and Okemos as high as sixth in one poll. Okemos with the revenge factor, having lost a close one in overtime to DeWitt earlier in the year. Needless to say, tomorrow night's clash in the Okemos gym deserves Big-Game status.

"We're going to have to play well if we want to beat them," DeWitt coach D.J. Lincoln said. "Okemos has three really good ballplayers (Mark Abraham, Greg Mitchell and Matt Kistler.) You can't stop them, so you just have to hope they don't rip you apart."

The Panthers warmed up for Okemos by getting revenge on Eaton Rapids last Friday, 88-77. Earlier in the year, the Greyhounds handed DeWitt its only loss in the Capital Circuit.

"I don't know why we always bring out the best in Eaton Rapids," Lincoln said. "They played really well against us in the first half. I was happy with the win, but we could have played better defense. Anytime you give up 77 points, that's a lot."

It was key free-throw shooting down the stretch which iced the game for the Panthers. Dave Pettit hit six of eight charity tosses in the fourth quarter, while Jim Seegraves was four-of-four. Steve Sontich had another great game for DeWitt despite sitting out about a quarter with foul trouble, picking up 26 points and 12 rebounds. Pettit finished with 16 points, Seegraves with 12 and Sam Dalman and Pete Lucci with 10 each.

"We didn't play particularly well, but we did play hard," Lincoln said. "Earlier in the year, we were lacking intensity, but we've had about five or six consistent games in a row now. I just hope we can keep it up."

St. Johns falls to Corunna

Feb. 4 — Corunna 78, St. Johns 69: Hey, Corunna, what do you say we just don't count the first half, OK?

Unfortunately for the Redwings, though, the first half did count in the final score. They were dreadful in the first two quarters, shooting just 20 percent and scoring only 18 points. In the second half, St. Johns switched to a zone offense and exploded for 51 points, but it wasn't enough to climb out of the hole it dug.

"We just couldn't find the basket in the first half," Redwing coach Al Werbish said. "We missed everything — layups, free throws, just everything. We did play extremely well in the second half, but we were too far down. If we had played that well in the first half, we would have won the game."

The Redwings, who have made a habit this season of falling behind early, went down by 15 at the half. After three quarters, they cut the Corunna lead to six, and pulled to within two points in the fourth before the Bulldogs pulled away.

Steve Gonzales and Marty Martens each tallied 14 points for St. Johns, while Chris Loucks added 13. Martens also had 10 rebounds and Darrin Scott had his best game of the year, coming off the bench to dish off eight assists.

St. Johns will play host to last-place Alma tomorrow night.

'Wing tumblers lose to Holt

The St. Johns girls' gymnastics team didn't have enough to topple a tough Holt team last Wednesday, losing, 119.35-105.35.

Tami Sudau took second place in the uneven bars with a 7.15, while Theresa

DeSander was fourth with a score of 6.7. Chris Dedyne was fourth in the vault (7.6) and floor exercise (7.6). Holli Cartwright added a fourth place in the balance beam (6.55) for the Redwings.

Ritchie's tosses propel Bees

Free throws give Bath win

By BUDDY MOOREHOUSE

Feb. 4 — Bath 43, Perry 41: Two weeks ago against Laingsburg, Bill Ritchie had a chance to send the game into double overtime with two free throws. He missed, and Laingsburg held on to win.

Ritchie made up for that last Friday, though, hitting both ends of a one-and-one with four seconds left in the game against Perry to give the Bees their second league win against eight losses.

"The kids did very well," Bath coach Gary McCauley said. "We had beaten Perry before by 14, when we had all our seniors, so I think we did a good job with all the young players we had."

Bath trailed by five in the third quarter, but came back in the fourth as both teams took turns with the lead. The game was tied with a minute remaining, and the Bees had the ball. After stalling until the clock showed nine seconds, Bath called time out to set up the last shot.

"Then they fouled us," McCauley said, "which is what we were hoping for."

Ritchie responded by canning the two free throws, giving him 14 points on the night. The junior forward also added six rebounds. Mike Wilson added six points and seven rebounds, while Joe Douglas had six boards.

Feb. 1 — Haslett 87, Bath 51: The first time these two teams met, the score was...well, a bit on the lopsided side.

"We took the air out of the ball (stalled) and did some other things this time," McCauley said. "So the score wasn't as one-sided. We played well, but to tell the truth, we just ran out of gas. They kept running that press at us, and we only had eight guys."

Ritchie led the way with 18 points and six rebounds for the Bees, while Wilson added 12 points. Bath faces a tall task tomorrow night, travelling to Williamston for a game against the undefeated, second-ranked Hornets.

"I don't want to make any predictions for that game," McCauley said, "but we can get three wins in our last four games."

After Williamston, we have Dansville, Fowlerville and Leslie. I think we can win all of those three."

A set-up

Showing good form on this set is DeWitt volleyballer Kris Brown in last Thursday's match against Eaton Rapids. This play was good for the Panthers, but the game wasn't. Eaton Rapids won both games to sweep the match. (Photo by Bob Stern)



DeWitt first, Bath sixth

DeWitt had six individual champions in last Saturday's Leslie Invitational, easily winning the 12-team event. The Panthers racked up 171 points to second-place Leslie's 118½, while Bath was sixth with 88 points. Four grapplers placed for the Bees.

DeWitt's Chuck Brown was the winner at 98 pounds, beating Jim Combs of Dansville in the finals. Jim Sinadinos won at 119, getting a close 4-3 decision over Dennis Gerth of Ida in the finals. Tom Henning won the title at 132 pounds, beating Filip Carroll of Michigan Center in the final match.

At 138 pounds, Joe Myszak of DeWitt and Scott Wing of Bath had a very close match in the finals, with Myszak squeezing out a 4-3 win.

Craig Hummel won the title at 155 pounds and was voted the tournament's most outstanding wrestler. The senior state champion racked up three pins in the tourney, all under two minutes. In the final, it took Hummel just 1:21 to pin Todd Woelmer of Ida.

Jeff Garlock won the crown at 185 pounds, getting a decision over Mike Whitney of Charlotte to win the final.

In addition to Wing's second place at 138 for the Bees, Jeff Hughes was second at 112, Pete Snyder was second at 167 and Tim Pearson was third at 98.

Jeff Proctor finished in second place at 145 pounds for the Panthers, while Brad Monk was third at 105 pounds and Ted Decker was fourth at 198. Scoring points but not placing for DeWitt were Jody Brock at 126 and Kurt Ray at 167.

P-W experiments, batters Laingsburg

Pewamo-Westphalia 77, Laingsburg 59: Knowing they clearly had Laingsburg outmanned, the Pirates experimented a little in this game.

"I wanted to try some things to get ready for St. Pats (on Feb. 18)," P-W coach Steve Spitzley said. "We tried to ru a little and we tried to play some man-to-man, and we're not very fast. So as soon as they got close, we switched back to zone."

The result was yet another CMAC win for the league-leading Pirates. Senior forward Jeff Spitzley had his third superstar game in a row, clicking for 27 points and 15 rebounds. Ted Droste also had a good game, hitting

Marauder spikers split

It wasn't really a game for the highlight film. Ovid-Elsie's volleyballers took it on the chin from Chesaning last Tuesday, dropping a 6-15, 1-15 decision to the seventh-ranked team in the Class B state poll.

"We were good at the net," Marauder coach Doug Long said, "but our serving was very bad. We just lacked the intensity that we needed."

Kristi Hudecek was the best offensive player for O-E, while Connie Hettinger was the best on defense.

The Marauders bounced back on Thursday with a 15-10, 15-13 win over Fulton. Teri Woodbury led the way with eight service points, while Hudecek added five. Woodbury was also five-of-five on spikes.

"It was a nice game, because we got to play everybody," Long said. "We got to start some people who hadn't started before."

The Marauders are now 6-7 overall, 0-2 in the Mid-Michigan 'B'.

for 25 points, seven assists and five steals.

"Nobody played really well," Spitzley said. "We were ready for the game, but they just didn't play as well as they can."

P-W should have no trouble tomorrow night when it travels to Fulton for a showdown of the Pirates, the nickname both teams share.

ST. JOHNS VOLLEYBALL LEAGUE

MEN'S STANDINGS	
Mid-Mich. Chiro. Center	24-0
Lenders and Spenders	22-2
Sports Section	21-3
Bruno's	15-9
Sillman's	14-10
Hub Tire	9-15
Briggs Co.	8-16
Mead's Office Supply	4-20
Court Jesters	3-21
Moon's Lathing and Drywall	2-22

Attention Farmers!

SPRING FEVER

OPEN HOUSE
3 Big Days

Feb. 10: 7:30 p.m.
Axial Flow Combine Meeting
Feb. 11: Free Pancakes & Sausage
Feb. 12: Door Prize Drawing

Plow Part Specials
plus

10% Discount on Cash Sales
of All Parts in Stock



GARLOCK EQUIPMENT SALES
143 Orchard, Grand Ledge
627-5858 or 627-2807



When you need repairs around the home—and you need them fast—check the business and service directory in classified.

IN THE AMERICAN TRADITION

BUSINESS OF THE WEEK

THIS BUSINESS IS CONSUMER PREFERRED

MOTEL

ST. JOHNS MOTEL

• HBO & COLOR CABLE TV
• AIR CONDITIONING
• WATERBEDS AVAILABLE

224-2321 ONE MILE NO. OF M-21 OR U.S. 27

—APARTMENT UNIT AVAILABLE—

THIS BUSINESS LOCATED ON YOUR GREEN & WHITE PHONE BOOK COVER.

The Archery Shack

NEW ARRIVALS COMING SOON!

DARTON BOWS
6 Brand New Models

11 Models Total to Choose From
209 S. Bridge • DeWitt, MI 48820

Ph. 669-3204

Personal Service is Our Goal

Jim & Joyce Cheney Owners & Operators

Farm Oil Special

Your Choice

-303
-15W40
-Hydraulic

\$ 3 25 gal.

Bring your own container
OFFER EXPIRES MARCH 1

Ph. 321-8000
3600 N. Gr. River
Lansing
(Just east of Capitol City Airport)

AIS CONSTRUCTION EQUIPMENT Corp.

ATTENTION

City of DeWitt Residents

Because DeWitt City Hall will be closed on Monday, February 21, 1983, due to Presidents Day, the regular City Council Meeting will be rescheduled for **TUESDAY, FEBRUARY 22, 1983 at 8:00 p.m.** at City Hall.

Margie Lotre
Clerk/Treasurer

224-044 2-10-83

Chatter by Char

By CHARLENE ROBERTSON
Bath area correspondent



Special Thanks

The Orr family wishes to thank all of the people for helping in their time of need. They especially want to thank those who furnished food for the funeral, those who have been furnishing meals at home for the family, those who have given rides to the family, money donations and, most of all, support.

Congratulations to all of the Bath students who participated in the Special Olympics Friday, Jan. 28 in St. Johns. Nine of the students won trophies, including Roger Lancaster, David Flewelling, Mark Smith, Ron Cain, Dan Corey, Dan May, Les Flewelling, Scott Stanton, and Brandi Wicks. In addition, the following students participated in the bowling tournament: Michael Browne, Tracy Dotson, Melvin Havens, James See, Jeff Seeley, Tanya Lloyd, Tanya Hatfield, Stacey Frederick, Danielle Sager, Katring Dowell, Gail Corey, Moses Castillo, Zeb Adams, Richard Paul, Wendy Corey, John Delaverne, Mike Homer, Ron Lambert, Todd Lloyd, Charlie Lutz, Brian Potrofska, Billy Wehring, Jason Whitman, Angie Wicks, Sherie Harte, and Eric Adams.

Food Co-op

A Community Food Co-op will be started at Gunnisonville United Methodist Church at the corner of Wood and Clark roads. The first meeting will be held at the Church Saturday, Feb. 12 at 9:30 a.m. If you are interested, please plan to attend. If you want more information, call Val Vail-Shirey at 641-6384, or Karen Cook at 641-6383.

Bath United Methodist Church is doing a quilt project and invites members of the church and friends to help with it. If you are interested in embroidering a square, please contact Pat Shiffer at 641-6869, or Ila Shepard at 641-6116.

Seventh and eighth grade band students went to see "The Marriage of Figaro" at the Wharton Center at Michigan State University on Monday, Jan. 31.

The Bath Township Lions Club built a ramp for Mr. and Mrs. Charles Love of Dutch Hills Mobil Home Community. Mr. Love and his wife, Betty, has trouble with stairs, so the Bath Lions saw the need and went ahead with the project. Working on the ramp were Lion President Earl House, Eric Hall, Jim Hagerman, Rick DeSantis and Ken Robertson. These men deserve a big thanks as they worked in cold weather to get this project done.

Special People

Mrs. Bertha Howe was 93 years old on Friday, Feb. 4. Congratulations on your birthday and we wish you many more.

Mary Ellen Thelen weds

St. Gereard Church in Lansing was the scene of a wedding uniting Mary Ellen Thelen and David Gerard Schertzing. The double-ring ceremony was conducted by Fr. Bob Gerl at 1 p.m. Saturday, Oct. 23.

The bride is the daughter of Mr. and Mrs. Melvin Thelen of DeWitt. The groom is the son of Mr. and Mrs. Daniel Schertzing of Dimondale.

The altar was adorned with sprays of mums, carnations and daisies. Vocalists Beth and Tom Webb performed, accompanied by organist Pauline Redmond, and the groom played his guitar and sang a song he wrote for the bride.

Given in marriage by her mother and father, the bride wore an ivory gown of polysheer organza over taffeta with chantilly lace, pearls and full bishop sleeves.

Her net veil was accented by lace and she carried a cascade bouquet of

red roses and ivory carnations.

Maid of Honor was Germaine Kowatch of Pewamo. Bridesmaids were Debra Schertzing, Linda Hey, Deborah Plog and Mary Egner. They wore gowns of different colors, flowers in their hair and carried bouquets of silk flowers.

Rick Fowler of Dimondale was best man; groomsmen were Tony Quinn, Kirk Ramsey and Phillip and Brian Schertzing. Ushers were Dave Thelen and Timothy Quinn.

The bride's mother wore a powder blue gown and the groom's mother wore a mauve gown. The fathers wore black tuxes, as did groomsmen and ushers.

A reception and a buffet supper for 300 guests was held in the evening at Majella Hall.

Following the ceremony, the couple honeymooned in Hawaii. They now reside in Dimondale.



Mr. and Mrs. David Schertzing

Mrs. Florence Witchell will be 89 years old on Saturday, Feb. 26. We hope your birthday will be very happy.

Correction on Mary Reed's address: it should be Provincial House East, 2815 Northwind Dr., E. Lansing 48823.

Reminders

Mid-Michigan District Health Department will have W.I.C. and a blood pressure and immunization clinic at the Lakeside Chapel of Park Lake Thursday, Feb. 17. You must make an appointment by calling 669-3663.

Bath Township Lions meet Thursday, Feb. 17, at the Family Kitchen, 6:30 p.m.

Bath Ear Floppers meet to work leader dog puppies Tuesday, Feb. 15 at the Bath Elementary School, 7 p.m.

Labels continue to come in at Bath Elementary School. There are now over 17,200 labels and coupons toward the computer. The continued support from the community is appreciated and we are especially grateful to Harold and Judy Cook for the many hours they have devoted to sorting and counting labels. Let's keep them coming in.

Remember, Bath Transportation Department will not issue bus passes unless it is an emergency.

The drop box is still at Bath Shoprite, or you can call 641-4269. Happy Valentines Day! Till next week, Char.

Country & Western
At Its Finest!

The JACK & JACKI BAND
Friday & Saturday

No cover charge!

THE Nitty Gritty

Downtown DeWitt

TUESDAY THRU SATURDAY 9:30-5:30

WOOD STOVE SELL-OUT

WE'RE SERIOUS • EVERYTHING GOES IF YOU WANT IT - YOU'LL GET IT NO FAIR OFFER REFUSED

ASHLEY • LOPI • RUSSELL
EVERYTHING & KIND IN HEATING WOOD-SPLITTERS • WATER HEATERS

GIBSON HEATING

663-3574

6211 BUNKER RD. EATON RAPIDS

FEBRUARY SPECIAL

LOPI FIREPLACE INSERTS
LX CAST & GLASS Save 283⁰⁰ ONLY 699⁰⁰
LX BRASS & GLASS Save 300⁰⁰ ONLY 765⁰⁰

FREE \$120.00 BLOWER

2 MI. N. OF EATON RAPIDS & 1/2 MI. E. OF M-99

Sale

HUMIDIFIERS
— Furnace
— Portable

MEDICINE CABINETS
— Oak Frame
— Different sizes
— Save 40 - 80%

SPACE HEATERS
— Catalytic gas
— Electric baseboard

In stock merchandise only

hedlund Plumbing Shoppe PH. 321-5955

Hours: Mon, thru Thurs. 9-6;
Friday 9-8:30; Sat. 9-3
6323 W. Saginaw
1/2 mile west of Lansing Mall

VISA

LEGAL NOTICE

Notice is hereby given that the Clinton County Zoning Board of Appeals will conduct a public hearing on Tuesday, February 22, 1983 at 8:00 P.M. in the Clinton County Service Center, 306 E. Elm Street, St. Johns, Michigan.

The subject of the public hearing will be the consideration of the following cases:

AB-1-83 BATH CHARTER TOWNSHIP - Lot of Record Determination
An application for a special exception has been filed by Mr. David Fry on behalf of Mr. and Mrs. Ralph Tarrant, 11020 Watson Road, Bath, Michigan pursuant to the provisions of Section 4.4.10 of OR-1-78, the Clinton County Zoning Ordinance. Relief, if granted, would grant lot-of-record status for zoning purposes for the following legally described parcel of property, which if approved, would allow the utilization of a parcel of property for residential use which was created but not officially recorded prior to the enactment of zoning requirements which required additional road frontage.
Beg. at the NE cor. of Sec. 6, T5N-R1W, Bath Charter Township, Clinton County, Mi, th. W. 380', S. 132', E. 380', N. 132' to beg.

AB-2-83 Bath Charter Township - Application for Lot Split
An application for lot division has been filed by Mid-Michigan Landscape Co., Inc., 16764 Newton Road, East Lansing, Mi 48823 pursuant to the provisions of Article 4, Section 4.4.14, LOT DIVISION of OR-1-78, the Clinton County Zoning Ordinance. The application, if approved, would permit the splitting of lot 39 of Supervisors Plat of Smith Subdivision for purposes of adding additional lot area and frontage to lots 38 and 40 which are located in part of the W 1/2 of the SW 1/4 of the SE 1/4 of Sec. 28, T5N-R1W, Bath Charter Township, Clinton County, Michigan.

The appeal application(s) and OR-1-78, the Clinton County Zoning Ordinance are available for public inspection in the Department of Development Control located at 1003 S. Oakland Street, St. Johns, Mi between 8:00 A.M. - 12 Noon and 1:00 P.M. - 5:00 P.M. Monday through Friday. Interested persons are requested to attend the hearing and voice their opinions in respect thereto or written comments may be forwarded to the Department. Please call 224-6761 Ext. 221 for further information.

J. Anthony Nelson, Director
Department of Development Control

224-042 02/10/83

KUSHION: To Mr. and Mrs. Bruce E. Kushion of 12780 Wood Rd., Bath, Jan. 12 at Sparrow Hospital, a son, Brian Jeffrey.

SIMON: To Mark and Marge Simon of 11187 E. Davis Highway, Pawemo, Jan. 13 at St. Lawrence Hospital, a daughter, Krista Marie.

Births

MOTZ: To Mr. and Mrs. Julius Motz of St. Johns, Jan. 8 at Carson City Hospital, a daughter, Julieanna Ann.

MILLER: To Mr. and Mrs. Richard Miller of St. Johns, Jan. 10 at Carson City Hospital, a daughter, Holly Rose.

HURST: To Randall J. and Jill Hurst of 7651 Round Lake Rd., Laingsburg, Jan. 6, a son, Jesse Randall.

BAILEY: To Mr. and Mrs. Jeffrey A. Bailey of St. Johns, Jan. 13 at Clinton Memorial Hospital, a daughter, Br'ney Nicole. Grandparents are Mr. and Mrs. Adam Bailey and Mr. and Mrs. Donald Krause of Chesaning. The mother is the former Miss Brenda Krause.

TRIERWEILER: To Michael G. and Brenda Triewweiler of 305 S. Willow, Westphalia, Jan. 16 at St. Lawrence Hospital, a son, Phillip Michael.

STATE OF MICHIGAN PROBATE COURT COUNTY OF CLINTON

PUBLICATION AND NOTICE OF HEARING

Estate of EDWIN CHARLEY WIRTH, Deceased, File No. 20592
TAKE NOTICE: On the petition of Richard Rosier, administration of the above estate was granted to Richard Rosier.

Creditors of the deceased are notified that all claims against the estate must be presented said Richard Rosier at 10483 Clark Rd., Eagle, Michigan, and proof thereof, with copies of claims, filed with the court on or before April 15, 1983. Notice is further given that the estate will be thereupon assigned to persons appearing of record entitled thereto.

Dated: January 18, 1983

Richard Rosier
 10483 Clark Road
 Eagle, Michigan
 Phone: 626-6083

James R. Pearson, P28432
 111 S. Waverly Rd.
 Lansing, MI 48917
 Phone: 321-1943

2-10-83
 CCN-041
 144

When you need repairs around the home—and you need them fast—check the business and service directory in classified.

MORTGAGE SALE

Default has been made in the conditions of a mortgage made by James G. McGuire and Donna J. McGuire, husband and wife, to Fleet Mortgage Corporation, f/k/a Mortgage Associates, Inc., a Rhode Island Corporation, Mortgagee, Dated November 14, 1980, and recorded on November 18, 1980, in Liber 313, on page 165, Clinton County Records, Michigan, on which mortgage there is claimed to be due at the date hereof the sum of One Hundred Twenty Nine Thousand Six Hundred Thirty One and 07/100 Dollars (\$129,631.07), including interest at 13% per annum.

Under the power of sale contained in said mortgage and the statute in such case made and provided, notice is hereby given that said mortgage will be foreclosed by a sale of the mortgaged premises, or some part of them, at public venue, at the Front entrance to the Court House in St. Johns, Michigan, at 10:00 o'clock A.M., Local Time, on Thursday, March 17, 1983.

Said premises are situated in Township of Eagle, Clinton County, Michigan, and are described as follows, to-wit:

Beginning S 89°43'30" East 962.9 feet from a point on the N-S ¼ line which is N 00°06' West 609.6 feet from the center of Section 16, T5N, R4W, Eagle Township, Clinton County, Michigan; thence N 00°06' West 429.2 feet; thence N 15°21'30" East 270.1 feet to a creek thence N 28°31' West 55.9 feet, including the land lying Westerly of said line to the center of the creek; thence S 89°09'30" West 82.0 feet, including the land lying Southerly of said line to the center of the creek; thence N 20°19' West 190.6 feet to the Looking Glass River, including the land lying Westerly of said line to the center of the creek; thence N 84°02'30" East along the river 139.6 feet; thence N 30°45' East along the river 252.7 feet; thence N 50°52'30" East along the river 249.1 feet; thence S 00°24' West 1306.2 feet; thence N 89°43'30" West 347.4 feet to the point of beginning.

Also the right of ingress and egress over a 66 foot easement for an existing gravel road, lying 33 feet on both sides of the following described line: beginning on the North-South ¼ line N00°06' West 1067.4 feet from the center of Section 16, T5N, R4W, Eagle Township, Clinton County, Michigan; thence N 87°34'30" East 378.1 feet; thence S 79°03'30" East 275.3 feet; thence N 89°26'30" East 314.9 feet to the point of ending on the Westerly line of the above described premises.

During the twelve months immediately following the sale, the property may be redeemed.

Dated: January 27, 1983

Fleet Mortgage Corporation
 Mortgagee

Hecht, Buchanan & Cheney
 Sixth Floor Frey Building
 Grand Rapids, Michigan 49503

1-27-83
 CCN-014
 460

NOTICE OF MORTGAGE FORECLOSURE SALE

Default having been made in the conditions of a certain Mortgage made on 15th day of June, 1978, between SILAS H. FOLTZ and MEREDYTH J. FOLTZ, husband and wife, Mortgagors, and CAPITOL FEDERAL SAVINGS AND LOAN ASSOCIATION, formerly CAPITOL SAVINGS AND LOAN ASSOCIATION, Mortgagee, and recorded with the Register of Deeds for Clinton County, Michigan, on June 16, 1978, in Liber 296, Pages 201-204, on which Mortgage there is claimed to be due at the date of this Notice the sum of \$23,858.25 principal and interest, and no suit or proceedings at law having been instituted to recover the debt or any part thereof secured by said Mortgage;

NOTICE IS HEREBY GIVEN that by virtue of the power of sale contained in said Mortgage and the statutes of the State of Michigan in such case made and provided, on Friday, February 11, 1983, at 10:00 o'clock in the forenoon at the main entrance to the Clinton County Courthouse, St. Johns, Michigan, that being the place where the Circuit Court for the County of Clinton is held, the undersigned will sell at public auction to the highest bidder, together with interest at 9 3/4% per annum and all allowable costs of sale and attorney's fees, the land and premises in said Mortgage described as follows:

THE W ½ OF LOT 3 AND THE NW ¼ OF LOT 4, BLOCK 20 VILLAGE OF MAPLE RAPIDS, CLINTON CO., MICH., ACCORDING TO THE RECORDED PLAT THEREOF IN LIBER 42 OF DEEDS, PAGE 41, CLINTON COUNTY RECORDS. SUBJECT TO EASEMENTS, RESTRICTIONS AND RIGHTS OF WAY OF RECORD.

The redemption period shall expire 6 months from the date of sale.

DATED: January 13, 1983

CAPITOL FEDERAL SAVINGS AND LOAN ASSOCIATION

STEVEN G. HOSLER
 Attorney for Mortgagee
 803 Capitol Savings & Loan Bldg.
 Lansing, Michigan 48933

1-13-83
 CCN-862
 315

NOTICE OF MORTGAGE FORECLOSURE SALE

Default having been made in the conditions of a certain Mortgage made on the 2nd day of February, 1978, between DARLENE H. MIKOWSKI, a single woman, Mortgagor, and CAPITOL FEDERAL SAVINGS AND LOAN ASSOCIATION, formerly CAPITOL SAVINGS AND LOAN ASSOCIATION, Mortgagee, and recorded with the Register of Deeds for Clinton County, Michigan, on February 6, 1978, in Liber 296, Pages 864-867, on which Mortgage there is claimed to be due at the date of this Notice the sum of \$25,740.79 principal and interest, and no suit or proceedings at law having been instituted to recover the debt or any part thereof secured by said Mortgage;

NOTICE IS HEREBY GIVEN that by virtue of the power of sale contained in said Mortgage and the statutes of the State of Michigan in such case made and provided, on Friday, March 11, 1983, at 10:00 o'clock in the forenoon at the main entrance to the Clinton County Courthouse, St. Johns, Michigan, that being the place where the Circuit Court for the County of Clinton is held, the undersigned will sell at public auction to the highest bidder, together with interest at 9% per annum and all allowable costs of sale and attorney's fees, the land and premises in said Mortgage described as follows:

LOTS 76, 77, & 78, AUTO PARK, A SUBDIVISION OF THE E ½ OF THE SE ¼ OF THE SE ¼ OF SEC. 33, T5N, R2W, DEWITT TOWNSHIP, CLINTON COUNTY, MICHIGAN, ACCORDING TO THE PLAT THEREOF RECORDED IN LIBER 1 OF PLATS, PAGE 33, CLINTON COUNTY RECORDS.

The redemption period shall expire 6 months from the date of sale.

DATED: February 10, 1983

CAPITOL FEDERAL SAVINGS AND LOAN ASSOCIATION

STEVEN G. HOSLER
 Attorney for Mortgagee
 803 Capitol Savings and Loan Building
 Lansing, Michigan 48933

02-10-83
 CCN-042
 311

NOTICE OF MORTGAGE FORECLOSURE SALE

Default having been made in the conditions of a certain Mortgage made on the 10th day of June, 1981, between WALTER L. EYKE and MARY R. EYKE, husband and wife, Mortgagors, and CAPITOL FEDERAL SAVINGS AND LOAN ASSOCIATION, formerly CAPITOL SAVINGS AND LOAN ASSOCIATION, Mortgagee, and recorded with the Register of Deeds for Clinton County, Michigan, on June 11, 1981, in Liber 315, Pages 621-624, on which Mortgage there is claimed to be due at the date of this Notice the sum of \$48,351.12 principal and interest, and no suit or proceedings at law having been instituted to recover the debt or any part thereof secured by said Mortgage.

NOTICE IS HEREBY GIVEN that by virtue of the power of sale contained in said Mortgage and the statutes of the State of Michigan in such case made and provided, on Friday, February 11, 1983, at 10:00 o'clock in the forenoon at the main entrance to the Clinton County Courthouse, St. Johns, Michigan, that being the place where the Circuit Court for the County of Clinton is held, the undersigned will sell at public auction to the highest bidder, together with interest at 15 3/4% per annum and all allowable costs of sale and attorney's fees, the land and premises in said Mortgage described as follows:

LOT 65, MILLBROOK MEADOWS NO. 3, CITY OF DEWITT, CLINTON CO., MICH., ACCORDING TO THE RECORDED PLAT THEREOF IN L. 6 OF PLATS, P. 14 AND 15, CLINTON CO. RECORDS. SUBJECT TO EASEMENTS, RESTRICTIONS AND RIGHTS OF WAY OF RECORD.

The redemption period shall expire 6 months from the date of sale.

DATED: January 13, 1983

CAPITOL FEDERAL SAVINGS AND LOAN ASSOCIATION

STEVEN G. HOSLER
 Attorney for Mortgagee
 803 Capitol Savings & Loan Bldg.
 Lansing, Michigan 48933
 1-13-83
 CCN-863
 308

MORTGAGE SALE

Default has been made in the conditions of a mortgage made by Ida Lee Hosey, a single woman, to Mid-States Mortgage Corporation, a Michigan Corporation, Mortgagee, Dated February 26, 1980, and recorded on March 3, 1980, in Liber 309, on page 601, Clinton County Records, Michigan, and assigned by said Mortgagee to Fleet Mortgage Corporation, f/k/a Mortgage Associates, Inc., a Rhode Island Corporation, by an assignment dated September 30, 1980, and recorded on February 9, 1981, in Liber 314, on page 145, Clinton County Records, Michigan, on which mortgage there is claimed to be due at the date hereof the sum of Twenty One Thousand Two Hundred Twelve and 80/100 Dollars (\$21,212.80), including interest at 12% per annum.

Under the power of sale contained in said mortgage and the statute in such case made and provided, notice is hereby given that said mortgage will be foreclosed by a sale of the mortgaged premises, or some part of them, at public venue, at the Front entrance to the Court House in St. Johns, Michigan, at 10:00 o'clock A.M., Local Time, on Thursday, March 17, 1983.

Said premises are situated in the Township of DeWitt, Clinton County, Michigan, and are described as:

Part of Lot 49 Supervisor's Plat of Valley Farms No. 1, DeWitt Township, Clinton County, Michigan, described as follows: Commencing at a point 46 rods South and 254 feet West of the Northeast corner of Section 33, T5N, R2W, DeWitt Township, thence running West 50.0 feet, thence North 165.0 feet, and thence South 165.0 feet to the point of beginning according to plat recorded in plat book 1, page 41, Clinton County Records.

During the six months immediately following the sale, the property may be redeemed.

Dated: February 3, 1983

Fleet Mortgage Corp.
 Assignee of Mortgagee

Hecht, Buchanan & Cheney
 Sixth Floor Frey Building
 Grand Rapids, Michigan 49503

2-3-83
 CCN-029
 324

STATE OF MICHIGAN PROBATE COURT CLINTON COUNTY

CLAIMS NOTICE INDEPENDENT PROBATE

Estate of Brian Lee Sisco, Deceased, File No. 20670; Date of Death: November 22, 1982; Social Security Number: 380-40-3566

TAKE NOTICE: Creditors of Brian Lee Sisco, Deceased, whose last known address was 7161 Loomis Road, DeWitt, Michigan 48820, are notified that all claims against the Decedent's estate are barred against the estate, the independent Personal Representative, and the heirs, and the devisees of the Decedent, unless within four (4) months after the date of publication of this notice, or four (4) months after the claim becomes due, whichever is later, the claim is presented to the following Independent Personal Representative at the following address:

Linda Wise
 Independent Personal Representative
 Route 1, Box 1255
 Roscommon, Michigan 48653

BOS AND HANES
 Attorneys for the Estate of
 Brian Lee Sisco
 John E. Bos (P-11027)
 1020 Long Boulevard
 Suite 15
 Lansing, Michigan 48910-8596
 Phone: (517) 699-2841

2-10-83
 CCN-050
 171

NOTICE OF MORTGAGE SALE

Default having been made in the conditions of a certain Mortgage made by Rodney B. Shaw and Lorna F. Shaw, husband and wife, of 3536 E. Walker Road, St. Johns, Michigan 48879 to Clinton Bank & Trust Company, a Michigan banking corporation, of 200 North Clinton Avenue, St. Johns, Michigan 48879 dated October 16, 1981, and recorded in the office of the Register of Deeds for the County of Clinton and State of Michigan, on October 26, 1981, in Liber 317 of Mortgages, on pages 195, 196, 197 and 198 on which Mortgage there is claimed to be due at the date of this notice, for principal and interest, the sum of Thirty-five Thousand Four Hundred Eighty-three and 66/100 (\$35,483.66) Dollars, and no proceedings having been instituted to recover the debt now remaining secured by said Mortgage, or any part thereof, whereby the power of sale contained in said Mortgage has become operative;

Now Therefore, Notice is Hereby Given that by virtue of the power of sale contained in said Mortgage and in pursuance of the statute in such case made and provided, the said Mortgage will be foreclosed by a sale of the premises therein described or so much thereof as may be necessary, at public auction, to the highest bidder, at the front steps of the Courthouse in the City of St. Johns, and County of Clinton, Michigan, that being the place of holding the Circuit Court in and for said County, on March 23, 1983, at 10:00 o'clock in the forenoon of said day, and said premises will be sold to pay the amount so as aforesaid then due on said Mortgage together with 15.00 per cent interest, legal costs, Attorney's fees and also any taxes and insurance that said Mortgagee does pay on or prior to the date of said sale; which said premises are described in said Mortgage as follows, to-wit:

Lot 49 and the West 70 feet of Lot 50, Supervisors Plat of Ballantines Wee Farms, a subdivision in Section 28, DeWitt Township, Clinton County, Michigan.

The aforesaid mortgagor shall have six months from and after the date of the aforesaid public sale in which to redeem the above-described premises.

Dated: February 4, 1983

Clinton Bank & Trust Company, Mortgagee

William G. Jackson
 Attorney for Mortgagee
 120 E. Walker Street
 P.O. Box 246
 St. Johns, Michigan 48879

2-10-83
 CCN-043
 409

NOTICE OF MORTGAGE FORECLOSURE SALE

Default having been made in the conditions of a certain mortgage made 18th day of November, 1976, by Anne S. Davis, and assumed by Jewell R. Payne; as mortgagor, to the United States of America, as mortgagee, and recorded on November 18, 1976; in the Office of Register of Deeds for Clinton County, Michigan in Liber 288 of mortgages on pages 607-610; AND a certain mortgage made the 19th day of May, 1980 by Jewell R. Payne, as mortgagors, to the United States of America, as mortgagee, and recorded on May 19, 1980, in the Office of the Register of Deeds for Clinton County, Michigan in Liber 310 of mortgages on pages 535-538; on which mortgages there are claimed to be due and unpaid at the date of this Notice twenty-three thousand, eight hundred, seventy-five and 33/100 Dollars (\$23,875.33) principal and four thousand, five hundred, five and 38/100 Dollars (\$4,505.38) interest; no suit or proceeding at law or in equity having been instituted to recover the debt, or any part of the debt, secured by said mortgages, and the power of sale contained in said mortgages having become operative by reason of such default;

NOW, THEREFORE, Notice is Hereby Given that on March 10, 1983, at 10 o'clock in the forenoon at the north entrance to Clinton Co. courthouse in St. Johns, MI, that being the place for holding the Circuit Court for the County of Clinton, there will be offered for sale and sold to the highest bidder, at public sale, for the purpose of satisfying the amounts due and unpaid upon said mortgages, together with the legal costs and charges of sale provided by law and in said mortgages, the lands and premises in said mortgages mentioned and described, as follows, to-wit:

That property located in Clinton County, in the State of Michigan, Commencing 140 feet North of the West ¼ post of Section 13, T8N, R1W, Village of Elsie, Clinton County, Michigan, thence North 124 feet, thence East 330 feet, thence South 124 feet, thence West 330 feet to the point of beginning, subject to easements and restrictions of record, if any. The redemption period will be six months from the time of such sale. Property may be redeemed by paying the amount of the bid at the foreclosure-sale plus interest and any unpaid encumbrances on the property from date of sale. Dated January 27, 1983. Mr. Edward A. Hoffman, Regional Attorney, United States Department of Agriculture, Room 2920, 230 South Dearborn Street, Chicago, Illinois 60604, Attorney for Mortgagee. For Additional Information, please contact:

UNITED STATES OF AMERICA, acting through Farmers Home Administration, Room 209, 1405 South Harrison Road, East Lansing, Michigan 48823, Mortgagee.

1-27-83
 CCN-018
 464

LEGAL NOTICE

Notice is hereby given that the Clinton County Planning Commission will conduct a public hearing on Wednesday, March 9, 1983 at 7:30 P.M. in the Clinton County Courthouse, St. Johns, Michigan.

The subject of the public hearing will be the consideration of the following amendments to OR-1-78, the Clinton County Zoning Ordinance.

ZC-39-82 Watertown Charter Township - Rezoning

A petition for rezoning has been filed by Mr. Scott D. Maclean, P.O. Box 190, Ludington, MI 49431. The petitioner seeks rezoning from A-1, Agricultural Production to M-1, Light Industrial on the following legally described parcel of property which is generally located south of Grand River Avenue, east of I-96 and north of the C&O Railroad.

Twp. of Watertown, County of Clinton, State of Michigan, Com. at the E ¼ post of Sec. 33, T5N-R3W, west on the E-W ¼ line 1320' to W. ln. of E ½ of NE ¼, Sec. 33, th. N. on sd. ln. 2613' to cen. of M-16, th. S74°32'20" E alg. sd. c/1 of M-16 1363.4' to E. ln. of sd. Sec.; th. S. on sd. Sec. ln. 2271.5' to POB, exc. that par. of ld. lying N&W of a line desc. as fol: Beg. 466.15' S0°27'46" E alg. sec. ln. from NE cor. of Sec. 33; T5N-R3W, th. N74°49'33" W 80.95'; th. N74°32'20" W. // with Grand River Avenue 671.43' to Pt. of ending of free access r/o/w to Grand River Ave - M-16 and the POB of limited Access r/o/w of proposed I-69, th. S42°43'29" W alg. limited access r/o/w 336.43'; th. continue alg. limited access r/o/w on the arc of a curve to the left having a radius of 3669.72' a dist. of 600 feet, m/l to a pt. of ending on W. boundary. The lands described contains 65.5 acres.

ZC-41-82 Watertown Charter Township - Rezoning

A petition for rezoning has been filed by Mr. Ronald Muscott, 4234 Driftwood Drive, DeWitt, MI. The petitioner seeks rezoning from R-1B, One Family Low Density Residential to A-1, Agricultural Production on the following legally described parcel of property which is generally located ½ mile west of Airport Road, ¼ mile south of Herbison and 650' north of the Looking Glass River.

The rezoning, if approved, will permit the disposition of an application for a gravel and/or sand extraction operation on the subject parcel.

Part of the W ½ of NE ¼ of Sec. 13, T5N-R3W, Watertown Township, Clinton County, MI desc. as fol: Com. at NE cor. of Sec. 13, T5N-R3W, th. S89°18' W 2621.5' to N ¼ cor. Sec. 13, T5N-R3W, th. S. alg. N-S ¼ ln. 1100' to POB, th. N89°18'00" E 603.03' th. S0°10'31" E 669.59'; th. S78°1'35" W 616.00', th. N0°10'31" W 790' to POB sd. par. contains 10.10 acres therein.

The petitions for rezoning and OR-1-78, the Clinton County Zoning Ordinance are available for public inspection in the Department of Development Control located at 1003 S. Oakland Street, St. Johns, MI between 8:00 A.M. - 12 Noon; 1:00 P.M. - 5:00 P.M. Monday through Friday. Interested persons are requested to attend the hearing and voice their opinions in respect thereto or written comments may be forwarded to the Department. Please call 224-6761 Ext. 221 for further information.

J. Anthony Nelson, Director
 Department of Development Control

224-041

02-10-83

obituaries

Marguerite E. Glassford

Marguerite E. Glassford (Hanchett), 85, of 15620 DeLoof, East Lansing, Bath Township, died Feb. 6.
 Born June 3, 1897 in Lansing, the daughter of William and Margaret (Craun) Sanborn, she married Finley Glassford and Oscar Hanchett.
 Surviving are one son, William Hanchett of Lansing; two daughters, Ruth Stephens of Marysville and Marguerite Sage of East Lansing; three step-daughters, Vie Potrafka of Augusta, Ga., Mae Law of Clearwater, Fla. and Jean Foster of Lansing; a daughter-in-law, Sheila Hanchett of East Lansing; and a sister-in-law, Jennie Sanborn of East Lansing. She was preceded in death by one son, John Hanchett, and a step-daughter, Ione Siegrist.
 Services were held at DeWitt Area Chapel, 10 a.m. Wednesday, Feb. 9, with Rev. Thomas VanDyke. Burial was in Glendale Cemetery, Okemos.

Dennis L. Flegel

Dennis L. Flegel, 40, of 4007 Shepardville Rd., Elsie, died Thursday, Feb. 3 at Carson City Hospital, following several years of illness.
 Born in Alma March 2, 1942, the son of Lyle and Aletha Flegel, he was married to Karen Thornton in DuPlain Feb. 16, 1963. Mr. Flegel was a member of DuPlain Church of Christ and a former employee of Elsie State Savings Bank.
 Surviving are his wife, Karen; a daughter, Denae, at home; his parents, Mr. and Mrs. Lyle Flegel of Elsie; a sister, Mrs. Cheryl Sutfiff of Henderson.
 Services were held at DuPlain Church of Christ Monday, Feb. 7 at 1 p.m., with Rev. Justin Shepard. Burial was in DuPlain Cemetery. Arrangements were by Carter Funeral Home. The family has suggested memorial contributions be made to the Multiple Sclerosis Society.

Julius Fedewa

Julius Fedewa, 86, of 205 Heyer St., Westphalia, died Feb. 5 in Ionia.
 Born Jan. 1, 1897 in Westphalia, the son of John and Mary (Martin) Fedewa, Mr. Fedewa was a farmer. He was a member of St. Mary's Catholic Church and the St. Joseph's Society.
 Surviving are three sons, Francis of St. Johns, Gerald of Pewamo and Marvin of Westphalia; a daughter, Mrs. David (Monica) Hatt of Portland; 20 grandchildren; 11 great-grandchildren; a sister, Pauline Kloeckner of St. Johns.
 Services were held Feb. 8 at St. Mary's Catholic Church in Westphalia, led by Rev. Fr. James Schmitt.
 Burial was in St. Mary's Cemetery. Arrangements were by Neller Funeral Home.

Vera I. Loesch

Vera I. Loesch, 67, formerly of DeWitt, died Jan. 30 in Placida, Fla.
 Born May 10, 1915 in Clinton County, the daughter of Fred and Mary (Allen) Peltier, she married Cliff Loesch in Lansing, Aug. 11, 1933.
 Surviving are her husband, Cliff; a son, Robert of Alaska, Mich.; a daughter, Donna Janowiak of Greenville, S.C.; two sisters, Iva Diehm of Lansing and Arvilla McKenzie of Hastings; seven grandchildren and five great-grandchildren.
 Services were held at DeWitt Area Chapel Feb. 8, 1 p.m., with Elder Earl Barks Sr.

BATH CHARTER TOWNSHIP

The Bath Charter Township Board at its regular monthly meeting of February 7, 1983 adopted Ordinance No. 33 after its second reading. Ordinance 33 states that it is an ordinance to establish procedures and standards for review of applications, renewals, and revocation of license to sell beer and wine or spirits.
 This Ordinance may be viewed and inspected at the following places:

- | | |
|--|---|
| Bath Township Hall
14480 Webster Road | Dilday's Party Store
6081 Park Lake Road |
| Bath Post Office
Main Street | Bath Pharmacy
14043 Webster Road |
| Fort Bernie's Party Store
7397 M-78, East Lansing | Bath Shop Rite
Webster Road |

Kathleen B. McQueen, Clerk
Bath Charter Township

224-036

2-10-83

DEWITT CHARTER TOWNSHIP

NOTICE OF ORDINANCE ADOPTION PURSUANT TO ACT 637 OF 1978

TO THE CITIZENS OF THE CHARTER TOWNSHIP OF DEWITT, CLINTON COUNTY, MICHIGAN
 Notice is hereby given that the Charter Township of DeWitt is in the process of adopting Ordinance 108 R0059 which has as its purpose the amendment of Zoning District Map, as it pertains to land generally of DeWitt Charter Township, located on Wood Road in section 26 from A (Agriculture) to R3 (Residential).
 Notice is further given that said Ordinance will be effective immediately upon its adoption, copies of which are posted and may be viewed at the following locations within the Charter Township of DeWitt. The second reading of said Ordinance is scheduled for February 14, 1983 at the regular Township Board of Trustees meeting.
 1. Clerk's Office: DeWitt Township Hall
 2. Valley Farms Hardware: 4626 N. East St.
 3. Muir's Drugs: 13131 Schavey Road
 4. Jim's Shoprite: 3940 N. East St.
 5. DeWitt Shoprite: Herbison & U.S. 27
 6. Eberhard Food Store: 15487 N. East St.

Greg Whitlock
Township Clerk

224-043

2-10-83

NOTICE OF SPECIAL ELECTION AND OF REGISTRATION OF VOTERS TO THE ELECTORS OF THE CITY OF ST. JOHNS

NOTICE is hereby given that a special City election will be held at:

- Precinct No. 1: Swegles School
- Precinct No. 2: Nazarene Church
- Precinct No. 3: Rodney B. Wilson
- Precinct No. 4: Municipal Building
- Precinct No. 5: Episcopal Church

in said City, upon Tuesday, the 15th day of March, 1983, at which there will be submitted to the vote of the electors of the City, the question of ratifying a certain public utility franchise contained in an ordinance adopted by the City Commission at its meeting held upon the 10th day of January, 1983, which said ordinance is entitled as follows:

AN ORDINANCE, granting to CONSUMERS POWER COMPANY, its successors and assigns, the right, power and authority to construct, maintain and commercially use electric lines consisting of towers, masts, poles, crossarms, guys, braces, feeders, transmission and distribution wires, transformers and other electrical appliances on, under, along and across the highways, streets, alleys, bridges and other public places, and to do a local electric business in the CITY OF ST. JOHNS, CLINTON COUNTY, MICHIGAN, for a period of thirty years.

On the date of said election, the polls will be open at 7 o'clock in the forenoon, or as soon thereafter as may be, and will be kept open until 8 o'clock in the afternoon, Eastern Standard Time, when they will be finally closed.

The City Clerk will be in his office on the 14th day of February, 1983, between the hours of 8 a.m. and 8 p.m., Eastern Standard Time, said date being the thirtieth day, as determined by statute, preceding the date of said election, for the purpose of reviewing and registration and registering such of the qualified electors of the City as shall appear and apply therefor. In the event such thirtieth day shall fall on a Saturday, Sunday or legal holiday, registration shall be accepted during the same hours on the following day.

The proposal as it will appear on the ballot is as follows:
 Do you favor confirming and approving the grant of the franchise ordinance to Consumers Power Company for authority to construct, maintain and commercially use electric lines, and to do a local electric business in the City of St. Johns, Clinton County, Michigan, which ordinance was adopted by the City Commission on the 10th day of January, 1983?

- Yes
- No

- List of polling place locations:
 Pct. 1 - Swegles School
 Pct. 2 - Nazarene Church
 Pct. 3 - Rodney B. Wilson
 Pct. 4 - Municipal Building
 Pct. 5 - Episcopal Church

Richard L. Coletta
City Clerk

BY ORDER OF THE CITY COMMISSION

224-033

2-3-83

ORDINANCE NO. 345 CONSUMERS POWER COMPANY ELECTRIC FRANCHISE ORDINANCE

AN ORDINANCE, granting to CONSUMERS POWER COMPANY, its successors and assigns, the right, power and authority to construct, maintain and commercially use electric lines consisting of towers, masts, poles, crossarms, guys, braces, feeders, transmission and distribution wires, transformers and other electrical appliances on, under, along and across the highways, streets, alleys, bridges and other public places, and to do a local electric business in the CITY OF ST. JOHNS, CLINTON COUNTY, MICHIGAN, for a period of thirty years.
 THE CITY OF ST. JOHNS ORDAINS:

SECTION 1. That wherever the word "Grantee" appears in this ordinance, it is hereby intended to designate, and shall be held to refer to the Consumers Power Company, a Michigan corporation, its successors and assigns.

SECTION 2. The right, power and authority is hereby granted and vested in said Grantee to construct, maintain and commercially use electric lines, consisting of towers, masts, poles, crossarms, guys, braces, feeders, transmission and distribution wires, transformers and other electrical appliances on, under, along and across the highways, streets, alleys, bridges and other public places, and to do a local electric business in the City of St. Johns, Clinton County, Michigan, for a period of thirty years.

SECTION 3. No highway, street, alley, bridge or other public place used by said Grantee shall be obstructed longer than necessary during the work of construction and maintenance and shall be restored to the same good order and condition as when such work was commenced.

SECTION 4. All towers, masts, poles and other supports shall be set and all wires shall be suspended or buried in a careful and proper manner so as not to injure persons or property. The Grantee shall have the right to trim trees if necessary in the conducting of such business, subject, however, to the supervision of the City Manager or the City. The Grantee shall at all times keep and save the City free and harmless from all loss, costs and damage to which it may be subject by reason of the negligent construction and maintenance of the towers, masts, poles, wires and other structures and appliances, the erection, burial and maintenance of which are hereby authorized.

SECTION 5. The Grantee shall be entitled to charge the inhabitants of said City for electric energy for light, heat and power, the rates as approved by the Michigan Public Service Commission and at present effective within said City. Said rates shall be subject to review and change at any time by the Michigan Public Service Commission or its successors, upon proper application by either said Grantee or the City, acting by the City Manager, being made thereto, and the regularly filed rates as approved by said Michigan Public Service Commission or its successors, as applicable to said City of St. Johns, shall at all times be the lawful rates.

All bills for electric energy shall be payable monthly. The Grantee may collect the minimum charge as specified in said schedule. It shall also furnish and maintain commercially accurate meters to measure the energy furnished. Said Grantee shall at all reasonable times have access to the premises of its customers, for the purpose of reading, inspecting, removing and replacing such meters.

SECTION 6. The form of accounts kept by the Grantee shall conform to the orders and rules of the Michigan Public Service Commission.

SECTION 7. The value of the property comprising the Grantee's electric distribution system, used in supplying local service within the City of St. Johns, is hereby fixed and determined to be \$1,649,150.13, as of the effective date of this ordinance.

SECTION 8. The City of St. Johns determines that in improving, repairing, rebuilding and maintaining the streets, alleys, bridges and other public places in the City, no benefit accrues to the personal property of the Grantee, but if said Grantee owns

real estate, such improvement shall be paid for by it, in accordance with its benefit.

SECTION 9. The City shall have the right to establish and enforce reasonable standards of service and to order extensions of service and maintenance of fixtures, appliances and equipment in accordance with the rules, regulations and orders of the Michigan Public Service Commission.

SECTION 10. The joint use of Grantee's facilities in said City shall be permitted only upon such terms and conditions as may be imposed by the Michigan Public Service Commission.

SECTION 11. In case the City elects, under its charter, to purchase or lease the property of Grantee, used in or useful for the distribution and sale of electricity in said City, the price to be paid therefor shall be the value as set forth in Section 7 hereof, plus the cost of any additions, extensions or improvements which may be made to the said electric properties of Grantee after the effective date of this ordinance, together with the cost of the transmission lines and all improvements thereon necessarily expended in furnishing electric service to the City.

SECTION 12. In consideration of the rights, power and authority hereby granted, all of which shall vest in the Grantee for a period of thirty (30) years as aforesaid, said Grantee shall faithfully perform all things required by the terms hereof, and such performance by the Grantee shall be in lieu of all license fees, rentals or charges of every name and nature, except property taxes, which the City might otherwise levy and impose.

SECTION 13. This franchise shall not be deemed exclusive.

SECTION 14. The Grantee may lease, assign or otherwise alienate this franchise upon the condition that its successors shall be bound by and perform all of the obligations and terms hereof.

SECTION 15. The enactment of this ordinance shall be submitted for ratification to the vote of the electors of said City, and the same shall be and become valid and binding upon the approval and ratification of this ordinance by the affirmative vote of at least three-fifths of the electors of said City voting thereon at a regular or special municipal election to be held in the manner provided by law. This ordinance shall not be submitted to the electors unless the Grantee shall within thirty (30) days after the adoption hereof, file with the City Commission its written acceptance, subject only to the approval of the electors. Upon the acceptance hereof, and approval by the electors as aforesaid, this ordinance shall constitute a contract between said City and said Grantee, for the full term of thirty (30) years from and after the date of approval by said electors.

SECTION 16. This ordinance shall take effect twenty (20) days after its passage.

PASSED, ORDAINED AND ORDERED PUBLISHED BY THE CITY COMMISSION OF THE CITY OF ST. JOHNS, AT A REGULAR MEETING HELD THE 10th DAY OF JANUARY, A.D., 1983.

ACCEPTANCE

The Consumers Power Company does hereby accept the terms of the ordinance adopted on the 10th day of January, 1983, by the City Commission of the City of St. Johns, Clinton County, Michigan, subject to the approval thereof by at least three-fifths of the electors voting thereon at a regular or special municipal election to be held in said City, which said ordinance is entitled as follows:

AN ORDINANCE, granting to CONSUMERS POWER COMPANY, its successors and assigns, the right, power and authority to construct, maintain and commercially use electric lines consisting of towers, masts, poles, crossarms, guys, braces, feeders, transmission and distribution wires, transformers and other electrical appliances on, under, along and across the highways, streets, alleys, bridges and other public places, and to do a local electric business in the CITY OF ST. JOHNS, CLINTON COUNTY, MICHIGAN, for a period of thirty years.

IN WITNESS WHEREOF, said Consumers Power Company has caused this acceptance to be executed by its duly authorized officer this 10th day of January, 1983.

CONSUMERS POWER COMPANY

224-034

2-10-83

names in the news

□ Several Clinton County students were recently named Central Michigan University's honors list. Receiving straight "A"'s were: junior **Marla M. Miller**, 12875 Rambler, DeWitt; sophomore **Shirley J. Goerge**, Rt. 2 Hinman Rd., Fowler; junior **Tracy J. Bashore**, 3485 Meridian Rd., Ovid; senior **Eldina Marriage**, 243 E. Clinton, Ovid; and junior **Brenda S. Thelen**, 3943 W. M-21, St. Johns. Named to the honors list were: juniors **Amy L. Christofferson**, **Karen S. Carroll**, **Denyse Ringle** and sophomore **Kenneth Stevens**, all of DeWitt; Elsie senior **Kim K. Clark**; Fowler's **Jill Koenigsknecht**; Ovid freshman **Kevin H. Monroe**; and senior **Eugene Walter Pierce** and junior **Beth A. Walker**, both of St. Johns.

□ **Mark Willison** of DeWitt, a senior majoring in biology at Adrian College, was one of 24 campus leaders included in the 1983 edition of "Who's Who Among Students in American Universities and Colleges." Willison is a 1978 graduate of DeWitt High School.

NOTICE OF FORECLOSURE SALE

DEFAULT HAVING BEEN MADE in the conditions of a certain assignment of land contract as security made by RONALD W. McCOLLUM and BARBARA J. McCOLLUM of 3941 East State Road, Bath, Michigan 48808, Assignors, to EAST LANSING STATE BANK, East Lansing, Michigan, Assignee, dated June 25, 1979, and recorded in the office of the Register of Deeds for the County of Clinton, State of Michigan, on June 27, 1979, in Liber 305, Page 484.

Assignee having elected under the terms of said assignment as security to declare the entire principal and accrued interest thereon due, which election it does hereby exercise, pursuant to which there is claimed to be due and unpaid on said assignment as security on the date of this Notice for principal, interest and other sums allowed by said assignment, the sum of EIGHTY TWO THOUSAND TWO HUNDRED TWENTY AND 57/100 (\$82,220.57) DOLLARS, and no civil action or suit or proceeding at law or in equity is pending to recover the debt secured by said assignment, or any part thereof.

NOW, THEREFORE, by virtue of the power of sale contained in said assignment and pursuant to the statutes in such cases made and provided, NOTICE IS HEREBY GIVEN that on February 25, 1983 at 10:00 o'clock in the forenoon, at the front entrance of the County Courthouse in the City of St. Johns, Clinton County, Michigan (that being the place of holding the Circuit Court within the said County) said assignment will be foreclosed by a sale at public auction to the highest bidder of the premises described in said assignment, or so much thereof as may be necessary to pay the amount due as aforesaid, and any sum which may be paid by the undersigned at or before said sale for taxes and/or insurance on said premises, and all other sums paid by the undersigned, with interest thereon, pursuant to law and to the terms of said assignment, and all legal costs and expenses, including the attorneys fees allowed by law, which premises are described as follows:

That part of the North 1/2 of the Northeast 1/4 of the Northeast 1/4 of Section 36, T5N, R2W, lying South of the railroad right of way, containing ten acres, more or less, subject to any restrictions or easements of record and to the Remy Chandler Drain running along the approximate South line of the premises, Twp. of DeWitt, Clinton County, Michigan.

The Assignee, their successors and assigns or any person lawfully claiming from or under them, shall within one (1) month from the date of the aforesaid foreclosure sale be entitled to redeem the entire premises sold, by paying to the purchaser, his executors, administrators, or assigns, or to the Register of Deeds in whose office the deed is deposited for the benefit of such purchaser, the sum which was bid therefor, with interest from the time of the sale at 14%, that being the rate percent borne by the assignment plus any other sums required to be paid by law.

Dated: January 19, 1983

EAST LANSING STATE BANK
Assignee

Kenneth W. Beall
LOOMIS, EWERT, EDERER,
PARSLEY, DAVIS & GOTTING
1200 Bank of Lansing Building
Lansing, Michigan 48933
Phone: (517) 482-2400
Attorneys for Assignee

1-20-83
CCN-013
551

obituaries

Mary M. Bouten

Mary M. Bouten, 86, formerly of Lansing, died Feb. 2. Born Feb. 29, 1896 in Ludington, the daughter of Frances and Michaeline (Novicke) Sniegowski, she married Louis Bouten. Mr. Bouten preceded her in death.

Mrs. Bouten was a former member of St. Mary's and Holy Cross Catholic churches in Lansing.

Surviving are one daughter, Marguerite Fitch of Florida; two sons, Louis of Florida and James of Washington; a sister, Elizabeth Izdebski of Ludington; 27 grandchildren; 18 great-grandchildren; and five great-great-grandchildren.

Services were held at 10 a.m., Feb. 5 at DeWitt Area Chapel, with Fr. David Stotenbur. Burial was in St. Joseph Cemetery, Lansing.

Ethel V. (Sawdy/Durham) Tidd

Ethel V. (Sawdy/Durham) Tidd, 88, of Apt. 150, Amor Ln., St. Johns, died Feb. 5 at Hazel I. Findlay Country Manor.

Born March 16, 1894 in St. Clair County, the daughter of Thomas E. and Annie A. (Tibbitts) Scott, she lived most of her life in the Lansing area. Mrs. Tidd moved to Harrison in 1953, then to St. Johns in 1981.

A member of the VFW Auxiliary in Harrison and FOWE 3541, Harrison, she was a homemaker.

Surviving are two daughters, Mrs. Dawn Sump of Lansing and Mrs. Marie Randall of St. Johns; a son, Clyde J. Sawdy of Lansing; 13 grandchildren; 26 great-grandchildren; six great-great-grandchildren; several neices and nephews.

Services were held at Osgood Funeral Home Monday, Feb. 7, 1:30 p.m., with Rev. Keith Laidler. Burial was in DeWitt Cemetery.

CARTOON CASTLE

Every Day

Monday-Friday
7 a.m.-8 a.m. and
3:30 p.m.-4:30 p.m.

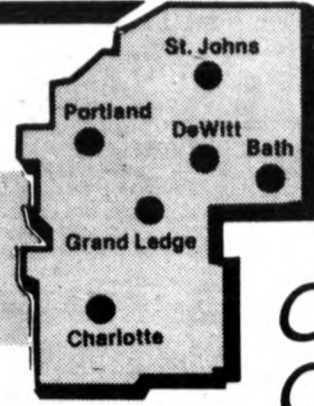
Saturday
7 a.m.-8 a.m.

Sunday
7 a.m.-10 a.m.



GREEN SHEET

Classifieds



One
Call

February 9, 1983

CLASSIFIED AD DEADLINE NOON TUESDAY

Gets Them All!

Real Estate-Sale
700-716

Real Estate-Rent
800-817

Merchandise
100-124

Pets
200-203

Farm
300-304

Announcements
400-413

Employment
500-503

Financial
600-605

Transportation
900-926

Service Directory

Charlotte Republican Tribune 543-7555
Clinton County News 224-2361
DeWitt Bath Review 627-4001
Grand Ledge Independent 627-4001
Portland Review & Observer 647-7541

Real Estate-Sale
700-716

Real Estate For Sale 700

DUCK Lake- Modern 2 bedroom home, 100 Ft. from large lake access. Landscaped yard, paved street, paved driveway, aluminum siding, 2 car attached garage, natural gas heat, carpeted. 45 miles NW of St. Johns. \$16,500. with \$1700. down. 517-235-4884.

EAST LANSING Contemporary redwood, three bedroom, split level. This close to MSU home-offers unusual privacy, inground pool and is surrounded by large beautiful white pine, spruce and other evergreens. \$69,900. Call Dodie Neller 332-8130. or Moore/Jensen 351-3900.

FOR Sale or rent with option near Webberville, 4 bedroom on 2 1/2 acres with outbuildings. Well insulated. Wood-oil heat. Pets considered. \$55,000. on Land Contract or \$375. per month. References and security deposit required. 655-4747.

FOR sale two bedroom cottage on Maston Lake. Will sell on contract with good down payment. Near Greenville. \$16,500. 517-649-8569.

NO MONEY DOWN

INTEREST RATES as low as 1% for qualified buyers. Income limits to \$23,500 adjusted. Federal financing. Borrow up to \$50,000. Example: Family income of \$18,000, two children, \$45,000 mortgage- monthly payment, \$178, approximately 5% interest, 33 year loan. Interest subsidy is subject to recapture. Loans are reviewed every 24 months for eligibility determination.

Aspen Assoc.
Realty, Inc.
East Lansing, Mich.
(517) 351-8670

Publishers Notice:
All real estate advertised in this newspaper is subject to the Federal Fair Housing Act of 1968 which makes it illegal to advertise "any preference, limitation, or discrimination based on race, color, religion, sex, or national origin, or an intention to make any such preference, limitation, or discrimination."
This newspaper will not knowingly accept any advertising for real estate which is in violation of the law. Our readers are informed that all dwellings advertised in this newspaper are available on an equal opportunity basis.

Real Estate Loans 704

BALLOONS WERE FUN when you were a kid. Now that you're a grown-up, they're scary. Let us remove your fear with an FHA, VA, or Conventional re-financing loan. Benchmark Mortgage Corp. 351-6302.

Cemetery Lots 706

THREE Burial lots at Chaple Hill. Choice location. \$1100. for all. 616-349-5403, evenings.

Duplexes for Sale 709

DUPLEX For Sale or rent by owner in Mulliken. 8 year old, all brick, 2 bedroom, electric heat, stove, refrigerator, car port, 900 Sq. Ft. per unit, on 0.37 acres. To rent, \$250. plus deposit and utilities. To own, \$65,000. Phone 517-649-8600, between 8am and 5pm.

Lots & Acreage For Sale 712

FOR SALE Ten acres: 1 1/2 miles east of Grand Ledge. Perked. Call for details. 627-9421 evenings.

RIVER ACREAGE. 100 acres, wooded, mostly level, blacktop road Northwest of Harrison. Hunting, fishing, snowmobiling. \$75,000. Georgie Laarman, Everett Realty, Inc., Lake City, MI. 49651. 616-839-4342.

RIVER Frontage. 6 to 12 acre parcels, land contract terms. Mobiles allowed. Evenings. 323-4253.

Try a classified ad to buy, sell, rent, or trade.

Land Contracts 713

CASH- for your land contract or mortgage. Fast service. Call C.I.I. Inc. 517-725-6288

CASH FOR LAND CONTRACTS & REAL ESTATE LOANS
Any type property anywhere in Michigan 24 Hours Call Free 1 800 292 1550 First National Accept Co.

Mobile Homes For Sale 714

DETROITER 1962 mobil home. 10x55. Located in Park Lake Mobil home park. Two bedrooms. \$1,500. or best offer. 641-4285.

FOR SALE 1979 New Moon mobil home, 14'x70', two bedrooms, 1 1/2 baths, central air. Priced right by owner. Call after 5 pm. 627-4231.

FOR Sale- Marlette- Mobil Home, 12'x63'. 2 bedrooms. Good condition. In Searles Trailer Park, 2 miles south of St. Johns. Natural gas. Glen Davis, 224-7618.

For Sale- 1982 Victorian Mobile home. 14x70, with 24' expando. Completely furnished with many extras. 2 bedrooms, 1 1/2 baths. On lot in Hidden Valley Trailer Park. Asking \$29,000. Call anytime, 647-6721 or after 5pm, 527-4725.

MOBILE HOME MOVING: Complete tear-down and set-up. Fully insured. Imperial Homes, 817 N. Clinton, Grand Ledge. 627-6622.

NEW AND USED Mobile Homes, lots for rent, 1 month free rent. Close to schools and stores, 2 blocks to Webberville. 521-3929.

SKYLINE Moniette 1979: 14 x 56 in Grand Ledge area. Two bedroom, excellent condition, appliances. Call Collect 616-531-7579

Real Estate-Rent
800-817

Apartments to Rent 800

APARTMENT for rent in Grand Ledge- One bedroom, carpet, air, laundry, \$205 and \$210. Available immediately. 321-9697.

CHARLOTTE AREA- Spacious two bedroom apartment, \$240 monthly. Carpeted, decorated, all kitchen appliances and carports. Senior Citizens: We are now offering a seven percent rent discount, plus a reduced security deposit. For information call 543-6058, Shaker House Apartments.

REALTY WORLD®
Fedewa
12228 S. U.S. 27, DeWitt
669-2675
224-3236

FISHER BODY walk to: Cozy three bedroom Cape Cod, finished basement, garage, FHA terms. Only \$2500 down. Call Joyce Bosley 641-4263 (V173).

CLEANER THAN CLEAN is the word on this three bedroom ranch, with full basement built in 1981 and situated on a large country lot. 30 year fixed rate assumption. Westphalia area. Ask for Jim Fedewa 587-3801. (P169).

REALTY WORLD
FEDEWA

Apartments to Rent 800

Centaur & Taurus
ADULTS
***INDOOR POOL**
***FREE CABLE**
***FREE HEAT & WATER**

Beautiful 1 & 2 bedroom apts. Spa facilities, appliances, air conditioned, drapes, carpet and carports included.

CENTAUR

300 Western
3 blocks East of Waverly off
West Michigan

487-2000
TAURUS

Corner of Creys & W. Michigan 1/4 mile west of Lansing Mall.

321-6300

DEWITT- Senior Citizens, 2 bedroom, 24 hour nursing care if needed. 669-5816.

FOR Rent- 1 bedroom apartment, employed only. No children or pets. Security deposit required. Call 647-7119.

FOR Rent- 2 bedroom upstairs apartment in Portland. 647-6292.

GRAND LEDGE: Immediate occupancy, nice one bedroom unfurnished apartment, near downtown, curtains, carpet, stove, refrigerator, non-smokers. \$250. per month, includes all utilities. Call 627-7161.

GRAND LEDGE- Near I-96 on Grand River Ave. 2-bedroom apartment with garage. \$240. per month, heat included. Call 626-2184.

GRAND LEDGE: three bedrooms, stove refrigerator and dishwasher, washer and dryer hook-up, heat and water paid. Available March 1. 627-8139. \$345.

GRAND Ledge area- ONE And Two bedroom, laundry facilities, car port. Starting at \$200. plus electric. 627-9175 or 627-8954.

GRAND Ledge- 2 room efficiency, furnished, all utilities paid, laundry facilities, car port. \$175. monthly. Call 627-7809.

Apartments to Rent 800

GRAND Ledge- Large 2 bedroom, unfurnished, convenient location. \$265. Call 627-4242.

GRAND Ledge- Unfurnished, upstairs apartment for rent. \$245. Range, refrigerator, utilities included. Phone 627-5800, nights.

LANSING (near Sparrow)- 1 bedroom, garage, and basement. Clean, \$260. All utilities paid. Call 372-7681 or 394-0387.

MASON- 2 bedroom in nice subdivision. Drapes, carpeting, modern kitchen, laundry facilities, and lots of storage. \$280. plus electricity. Deposit required. Phone 676-2300.

OKEMOS: Paddock Farms Apartments, East Grand River, near Meridian Mall. 1, 2 and 3 bedroom apartments and townhouses. From \$260. 349-1750.

PORTLAND: 3 bedroom partially furnished, no pets, references required. Call after 4pm, 224-6286.

POTTERVILLE- New 1 and 2 bedrooms. Carpet, appliances, laundry. Take Temp. I-69 to Potterville, South on M100 two blocks. For more information call, 372-2213. Equal Housing Opportunity and Handicapped Units available.

SPACIOUS one bedroom apartment, 630 Lookingglass, Portland. Appliances, air conditioner, laundry facilities furnished, heat and utilities paid. Phone 371-1410 9 to 5 weekdays.

SPECIAL VILLAGE GREEN
1 bedroom apartment
\$240

Located between Lansing Mall and Sharp Park

Indoor Pool*
Exercise room and sauna*
Excellent maintenance*
CALL TODAY: 321-3062

*Limited Offer- new residents only
VERY Nice, modern 2 bedroom apartment. Professional working people preferred. \$265. plus deposit, 394-7794 or 651-6521.

WASHINGTON HEIGHTS APTS. Spacious one and two bedroom apartments in beautiful Okemos area. Pool and tennis courts, central air conditioning, dishwashers, garbage disposals. No pets. From \$250. 349-9228.

WEBBERVILLE APARTMENTS- two bedrooms, appliances, air, carpeted, drapes, garage. No pets. 517-521-3323, 313-553-3471.

Duplexes, Townhouses to Rent 802

FOR SALE: Two bedroom duplex, good condition. Possible contract. 647-6574.
GRAND Ledge Duplex- 2 bedrooms, 1 1/2 baths, dining room, attached garage. No pets. \$325. 627-2465.

Halls to Rent 805

J'S TERRACE ROOM, Saginaw Hwy. Excellent for weddings, meetings, or classes. 300 people. Phone 323-9100.

Homes to Rent 806

EDGEMONT- Waverly- 3 bedroom, newly decorated, excellent neighborhood. \$350. per month. 323-1043 or 323-1628.

FARM HOUSE for rent, Grand Ledge Schools, \$400 plus utilities, Hartel Road. 645-7560.

FOR RENT three bedroom house in Fowler. 224-7052 or 224-2033.

FOR Rent- 2 bedroom house in DeWitt, gas heat. Call 669-9316.

FOR Rent- Modern farm home, 5 miles North of St. Johns on blacktop road. Combination wood/oil furnace. \$200. per month. Deposit and references. Phone 681-2054.

PORTLAND: 4 bedroom house, 1 car garage, pole barn, in town. \$250. per month. 625-3762.

Living Quarters To Share 808

WANTED: Professional girl to share duplex in Grand Ledge. \$225. Available any time. Call Cathy, 627-6974 after 5pm or 372-6255 before 4:30pm.

Mobile Homes To Rent 810

FOR Rent- Mobile Home 12x60, 2 to 3 bedrooms, gas heat, appliances furnished if wanted. Large country lot, Portland location. \$200./month, \$200. deposit. 649-8543.

TWO bedroom, \$180 per month. Deposit. No dogs. Westwind Court, Portland. 647-6474.

Mobile Home Lots to Rent 811

FOR Rent- Mobile home lot. \$110. Al Goodman, 647-6913 or 527-1359.

Rooms For Rent 815

SINGLE rooms for men. \$50/week. Newly decorated. Use of gyms, track, etc. YMCA 484-4000.

Sell in-the-way articles with a low-cost classified ad.

Wanted to Rent 817

RENT Or Possible Option- CLEAN 2 bedroom duplex or house with basement and yard in a quiet neighborhood. Quiet adult female with excellent local rental and employment references. Needed in May. Price limit \$350. including utilities, \$270. without. 882-5194, keep Irving.

Merchandise
100-124

CLASSIFIED RATES

Only \$3.50 for 10 words (20 cents per word over 10)
Classified deadlines - NOON Tuesday
Service Directory rates available upon request.
Service Directory deadline 4pm Monday.

We're the best buy around!
Charlotte Republican Tribune 543-7555
Clinton County News 224-2361
DeWitt/Bath Review 627-4001
The Independent 627-4001
Review & Observer 647-7541

PLEASE NOTE:

The Lansing Suburban Newspaper reserves the right to classify, revise or reject any classified ad, and are not responsible for errors after the first insertion.

Antiques 100

ANTIQUES Wanted- Kitchen cabinets, secretaries, tables and chairs (oak). Toby mugs. Also will buy estates. Phone 517-663-4222.

ANTIQUE oak dining table, chairs, clawfoot, pedestal, leafs. 484-3204.

ANTIQUE oak buffet, intricate carvings, drawers. 484-3204

JEAN'S DOLL HOSPITAL: Antique, Compo, vinyl repro dolls for sale. Patterns, books, stands. Also repair and bind dolls. 1913 Walnut St., Holt. Appt. or chance, 694-3663.

DOLL Show and Sale. Antique to Barbie, February 20, 9:30am to 4:30pm, Long's Banquet Center, Lansing. Added attraction Movie Star doll display. 694-3663.

MICHIGAN DEPARTMENT OF TRANSPORTATION

NOTICE TO PUBLIC SEALED BID SALE 8-581-SBR SEASONAL RENTAL OF FARM LAND IN EATON COUNTY

The Michigan Department of Transportation proposes to conduct a sealed bid sale for the seasonal rental (February 18, 1983 through December 31, 1983) of farmland in Eaton County.

Sealed bids will be received until 2:00 p.m. on Friday, February 18, 1983, at the Michigan Department of Transportation District Office, Two North Plaza, Jackson, Michigan, 49202, at which time and place all bids will be publicly opened and read.

ITEM NO. 1 C/S 23062 -Parcel 425
Approximately 73 tillable acres

Located on the north side of Vermontville Highway, between Otto and Benton Roads, across the road from 1010 Vermontville Highway.

No bid under \$2555.00 will be accepted for rental of this parcel.

BIDS must be made on prescribed form. To obtain this form and further information, contact Ila Walker, District Excess Property Representative, Michigan Department of Transportation, Two North Plaza, Jackson, Michigan 49202. Phone (517) 784-7172.

543-026 2-10-83

PINEHURST
at GRAND LEDGE

Spacious 2-bedroom units with 1 1/2 baths, all appliances, carpeting, wall-paper, carport and swimming pool. Full basement with washer & dryer. Lots of room and versatility. Pinehurst's operating policy is to maintain the premises in prime condition at all times and promptly service the needs of its residents.

Office Hours
Mon.-Sat 10-6
Sunday 12-4

\$150⁰⁰ off
1st Month's Rent
Furnished or unfurnished

one mile west of
M-100 & M-43
intersection on M-43
627-3446

Antiques 100	Appliances 101	Auction Sales 102	Fireplace Wood Energy Sources 107	Fireplace Wood Energy Sources 107	Garage/Rummage Sales 108
Antiques 100	Appliances 101	Building Materials 104	Cameras & Supplies 105	Garage/Rummage Sales 108	Good Things To Eat 110
Appliances 101	Auction Sales 102	Fireplace Wood Energy Sources 107	Chainsaws & Woodstoves 107	Health & Beauty 111	Household Goods 113

SERVICE DIRECTORY

Charlotte Republican Tribune... 543-8060
 Clinton County News... 224-8902
 DeWitt/Bath Review... 337-9757
 Grand Ledge Independent... 627-4025
 Portland Review & Observer... 647-7508

Service Directory

Accounting, Bookkeeping 001
 DON ENGLANDER AND ASSOCIATES
 Bookkeeping, small business consulting and tax service including monthly review of your P and L statement.
 515 N. Cedar Street, Mason 676-5466

Archery Service 003
THE ARCHERY SHACK
 (Your authorized Darton Factory Service Center.)
 Coming soon... The new 1983 Darton Bows. All new models!
 209 S. Bridge • DeWitt 669-3204

Appliance Service 004
 APPLIANCE REPAIR AND CONSULTANT SERVICE. All makes: Washers, dryers, refrigerators, freezers, ranges, etc. Dale Westrick.
 Wacousta Maintenance. 626-2256.
 S & J ELECTRONIC APPLIANCE & REFRIGERATION SERVICE
 Micro-Wave Oven Specialists
 We service Kenmore, General Electric, Whirlpool, Hotpoint appliances. Prompt, courteous service.
 669-3705

APPLIANCE SERVICE
 ...our only business
 Dehumidifiers
 Refrigerators
 Washers
 Dryers
 Freezers
 Ranges
 Microwaves
 Air Conditioners
 Amana & Whirlpool parts available
 20 Years Experience
TOWN & COUNTRY REFRIGERATION
 372-6219 or 626-6069

—SERVICE ALL MAKES—
Hill's Appliance Sales & Service
 22 Years Professional Experience
 (517) 647-7955 or 647-2418
 PORTLAND

ELECTRICIAN
 Licensed
 to update your present Wiring & Service
543-3188

Butcher Service 015

Since 1938 FOOD LOCKERS THE MEATING PLACE
 Custom Meat Processing
 Home Smoked & Cured Meats
 Variety of Homemade Sausages
 715 Goodrich St., Eaton Rapids 663-3473 or 663-3261

Carpentry 017

ADDITIONS, home repair, rec rooms, tiled bathrooms. Good work, low prices. Call 655-4270.
 CARPENTRY- ALL TYPES. Additions, remodeling, home repair. All work guaranteed. Free estimates. Clayton Realty & Builders. 487-8654, 372-0920.
 CARPENTRY, additions, home remodeling, recreation rooms, paneling and ceiling tile. Phone 323-2443.
 CARPENTRY: All types remodeling, additions, repairs, decks and porches built. Reasonable, licensed. Call Dan Tarno 484-3530.
 COMPLETE HOME SERVICE. Remodeling- Interior and Exterior. Licensed and insured. Leon, 321-2342.
 EXPERIENCED carpenters available. No job too big or too small. Free estimates. Call Howard Boyce, 322-0291.
 EXPERIENCED Carpentry, remodeling, roof repair (new or old). Any general home repair. Free estimates. After 4pm call Jerry Wohlscheid, 627-3862.
 HOME IMPROVEMENTS by Robert Hardy, Builder. Remodeling, repair and additions. Williamston, 655-1941 after 5pm.

Carpet, Furniture Cleaning 018

CARPET CLEANING: 2 rooms and hall, \$25. 484-5507.
CARPET CLEANING
 Maurers Sanitary Cleaners
 484-5491

Concrete Work 020

CONCRETE WORK: Basement, garage, barn floors, walks, patios, driveways. Free estimates, twenty years experience. Gale Ellsworth, (517)-521-4686.

Creative Services 022

LET Our Interior Decorators help you select and design a picture arrangement for your home. Call 627-6803, evenings or Saturday.

Electrical Services 026

ELECTRICIAN specializing in service changes, rewiring and adding outlets. Call 627-4229.

Excavating-Bulldozing 028

BURNHAM'S Farm Tiling, Call St. Johns 224-4045. Rte. 3, St. Johns.
 EXCAVATING by Mike George. Land clearing and ditching, basements. Top soil and road gravel. 655-1049.
 SIMONS EXCAVATING- Sewers and drain fields, backhoe, bulldozing, and trucking. Licensed and insured. 543-7589.

Fireplace & Chimney 030

CHIMNEYS, FIREPLACES, new and repair; cleaned and inspected. 39 year's experience. Otto Perry, 626-6388.
 "HAVE CHIMNEY WILL SWEEP". Chimney sweep, lowest rates. 349-7642.

Floor Coverings 032

WE Sell and install carpets, vinyl, hardwood floors. Also do repairs. No job too small. We will bring samples to your door. Quality work guaranteed. 566-8953 or 323-2957.

Hauling 037

ALLIED DISPOSAL RUBBISH SERVICE. Try us, you'll like us. 29 years serving Williamston, Meridian, Bath, DeWitt areas. \$6. monthly. 641-6211 Bath.
 SPENCE'S Rubbish removal. We haul anything. 372-2134.
 YOU call, we haul. Rubbish Removal- Regular or one time. Serving: Grand Ledge and surrounding Lansing areas. 393-2936

Heating & Air Conditioning 038

Phil Cooper Heating 482-8904
 24 Hour Emergency Service
 Tune Ups: \$28.95 + parts
 Cash, Checks, Bank Cards

Heating & Cooling
SLOANE SERVICE, INC.
 485-9437

Health Care Facilities 040

BEAUTIFUL new licensed home for the elderly in Ionia, 24 hour care, \$550. per month. 1-616-527-2606.
 NURSES AIDES to care for your elderly in their home. Call McDowell Nurses Aides, 1016 N. Washington, 484-3876.
 PRIVATE Home has room for two ambulatory elderly persons. 647-6703.

House Cleaning 041

CLEANING by Housewives Cleaning Service. Regular or one time basis. Call 339-2508.
 D&S Cleaning- experienced and references. Regular or one time. 372-5556.
 LET ONE of our professional 2-member teams bring holiday sparkle to your home. Cleaning supplies furnished. Bonded and insured. Regular or one time basis. Gift certificates available. HOLIDAY HOUSE CLEANING SERVICE. 321-6666.

House Cleaning 041

HOUSE-CLEANING Service. 2 experienced, dependable women. No job too big. One time or weekly. Competitive rates. 372-5556.
 I would like to clean your house, \$3. per hour, minimum 5 hours. Excellent references. 321-4132.
 LANDLORDS, professional cleaning for your apartments or houses by the hour or by the job. J.C. Sanitaire. 482-3082.

MR. POWER CLEAN
 Total Home Cleaning Service
 Wall Cleaning
 Carpet Cleaning
 Furniture Cleaning
 Also: Hot Water Extractor
 Carpet Cleaner Rentals
 Total Furnace Cleaning
 Includes: Fan, Firepot
 Chimney Base & Ducts
 All Power Vacuumed
MON-SAT
 9-5 p.m. 627-7776

Home Services 042

CARPENTRY minor electrical and plumbing. Call 351-4528.

Horse Shoeing 043

HORSES trimmed and shod. Certified by Michigan Horseshoers Association. Call Jim Cloutier, 484-2895.
 WILLIAMS HOUSE MOVING, free estimates, houses and buildings moved, raised. Fast service. (517)-463-3639.

Lath, Plaster, Drywall 052

A PATCH Plaster and Drywall Repair, textured ceilings. Twenty years experience. 351-4093.
 DON PUNG PLASTERING
 New, repair, remodel
 23 years experience
 Quality workmanship
 Free estimates, 321-4136
 DRYWALL and Plaster- New remodeled and repaired. 15 years experience. For free estimates call anytime 485-6748.
 PLASTERING: New, Repair. Satisfaction guaranteed. Over 30 years experience. Hilary Miller, 323-2569.

Lawn & Garden 054

AYLES TREE SERVICE
 • Tree Transplanting to 12" Trunk Diameter
 • Trimming & Removal
 • Landscaping
 INSURED
484-8318
 If busy 645-2625

Livestock Services 057

LIVESTOCK TRUCKING. You call, we haul. Albert Shoal, Grand Ledge. Phone 627-5635.

Musical Instrument Repair 060

CALLIOPE PIANO SERVICE
 Rebuilt vintage pianos, tuning, moving, and repair. 676-1986

Painting & Paper Hanging 062

AAA A'S PAINTING
 \$35 PER ROOM, winter rate. Licensed, insured. 12 year's experience. 484-5507.
 FREE Lance Artwork- sign painting, calligraphy of all types. 646-0131.
 HUTTON Painting Co. Interior, exterior, wall repairs, caulking, commercial & residential. 321-7641.
 PAPER HANGING
 Painting and power washing where quality counts. Call Mr. White 699-2939

Paper Hanging and Painting 063

PAPER HANGING AND PAINTING. First class work by experienced workman. Charles Reed 485-0460, 372-9445.
 LIFETIME EXPERIENCE- Interior, exterior painter. Complete restoring, repairs. Professional work only. Excellent references. Terry Woehler, 332-6368.

Plumbing 066

B and B PLUMBING- New installations, service and drains. Licensed. Reasonable. 351-3280.
 CROFF PLUMBING: Reasonable cost. Water softeners, piping, heaters, drains, general plumbing service. 626-6246, 626-6110.
 PLUMBING SERVICE- General. Free estimates, no job too small. Licensed, insured. 321-7145.
 PLUMBING: Experienced laid out plumber looking for odd jobs. 371-1430.
 TARNO'S Drain & Sewer Cleaning. Most any drain cleaned, \$35. and \$40. No results, no pay. Licensed and insured. Call anytime, 484-3530.

CRJWE'S DRAIN CLEANING
 Small drains, \$35
 Main drain, \$40
 Ask for free plunger
882-0016 or 646-6406

Repair Service 072

Atari Repair
 \$14⁰⁰ plus parts
Wisdom TV Service
371-2531

Roofing, Siding 074

ROOFING, SHINGLING and repair work. 14 years experience. Free estimates. Guaranteed work. 349, 0969.
 WE DO Shingling at reasonable fees. Quality work, guaranteed, backed by experience. Kevin, 587-6808 or Ron, 627-9884.

Roofing, Siding 074

COVENANT CONSTRUCTION
 • Remodeling • Siding
 • Insulation • Roofing
 Free estimate anywhere in greater Lansing
543-5016

Septic Tanks 078

SEPTIC TANK CLEANING
 Serving Charlotte, DeWitt, Dimondale, Eaton Rapids, Grand Ledge, Haslett, Holt, Mason, Pottersville, St. Johns, Wacousta.
 Ball Septic Tank Service 646-0661
 TANKS CLEANED
 Reasonable rates, prompt service
 T & L Septic Service 855-2132

Sewing & Tailoring 080

ALTERATIONS: Men and Women's. Quality work. Reasonable prices. Call Jeanette, 351-8507.
 CUSTOM SEWING and ALTERATIONS: See Barb or Judy at Under the Rainbow, 4411 S. Logan, 882-0496, Tuesday-Saturday, 10-5:30.
 DRESSMAKING, alterations and leather repair by experienced dressmaker. Leah-Marise Dressmaking, 332-4417 Monday thru Friday.
 ALTERATIONS, repairs, including jacket lapels narrowed, pants tapered, hems. Call Toddy 627-6511.
 PROFESSIONAL Seamstress. Alterations done. Prompt and dependable. Phone 627-9377.
 SEAMSTRESS will travel to your house for repairs, from alghans to zippers. Helpful for handicapped persons. \$20 minimum. Also repairs at home, no minimum. 517-394-6447.

Tax Consultants 088

'82 Income Tax Preparation
 '83 Financial Planning
 Professional, Reasonable
 Ken Ancona, 351-1420

INCOME TAX RETURNS: prepared in your home by experienced accountant. Lyle Ross 626-6949.
 INCOME Tax Service, 15 years experience. 410 Third St., Sunfield. Phone 566-8342, Loretta Peabody.
 INCOME Tax Service, your home or mine. 15 years experience. Call Duane Woodruff for appointment, 321-4031, days & evenings.
 INCOME Tax Preparation. Individual, business, farm- quickly and privately done. Call Larry Semrau, 323-3898.
 INCOME Tax Preparation- Reasonable rates, by appointment. Jim Maleski, 669-5916.

Tree Removal 091

PROFESSIONAL Accounting and Tax Services. Sheldon Accounting, 6355 E. Saginaw, Grand Ledge. 627-5362.

Typing & Secretarial 092

BRADLEY'S TREE REMOVAL Service. 371-3665, 24 hours.
 TYPING: 15 year's experience. My home, your office. W. Lansing, Grand Ledge area. Marcia, 627-8665.

Armchair shopping? You get it with classified

Sell in-the-way articles with a low-cost classified ad.

Household Goods 113

Complete household furnishings from an estate. Plus gas dryer 627-3349.
KIRBY 1981 upright sweeper, with all the attachments, including rug shampooer, runs great, cost \$600, sell for \$125. 676-3058.

LANSING FLEA MARKET
S. Cedar at Jolly

9am-6pm, Wed., Thurs., Fri., Sat., Sun.
Antiques, collectibles, household goods, and

Space for Rent
882-8782

LOVE Seat- Colonial style, good condition, clean. Muted brown, rust, and green plaid. \$75. 321-5635, evenings.

NEEDED By May 15th- baby crib, good condition. Phone 543-6902.

SEWING MACHINE SALE- Brand new Singer, White and Necchi machines at bargain prices. Guaranteed reconditioned machines from \$39.50, guaranteed repair work on all machines regardless of age or brand name. Edwards Distributing Co., 1115 N. Washington, Lansing, Phone 482-2292.

Misc. For Sale 114

BATTERY Sale- \$7 for your old battery in exchange for a new one. Western Auto Store, Williamston.

BEER MADE AT HOME is easy, cheaper, and better. Learn how, at your home or ours. Schedule a lesson, free of charge. Call Mike and Ryley Meagher at Basic Brewer, 468-3970.

COAL FOR SALE: One ton or more, \$65. per ton. Call Mason 676-5975, ask for John.

COLMAN CAMPING ICE CHEST. Excellent condition, like new. Large size. \$35. 332-8543 after 5pm.

DAMAGED DOORS- Interior and exterior, starting at \$2.50. Plywood Sales, 3121 S. Pennsylvania, Lansing, 882-0276.

FOR SALE: 4 Deepdale Cemetery lots. 63 yards used carpet, \$2./yd. 36" gas range, like new. \$250. Call 627-6972.

FOR Sale: Aquarium, 55 gallon with stand and accessories. Junior golf clubs with bag. Junior cross country skis. And self cleaning oven. 627-5962.

FOR Sale- Used video games, pin balls, and foos ball. Possibly trade for other games. Also 1979 Dodge Cube van, nice truck. \$4800. 616-527-0960.

FORTY Gallon Custom oak fish aquarium. All accessories included. \$170. complete. 647-7840.

MONUMENTS AND MARKERS- Low prices. Save as much as 20%, no salesman, guaranteed work. Eaton Monument Co.- between Charlotte and Bellevue at 3734 Battle Creek Rd. 543-3410.

ODDS and ends, wood window sashes, \$1 and up. PLYWOOD SALES. 882-0276.

REPOSSESSED SIGN! Nothing down! Take over payments \$58.00 monthly. 4'x8' flashing arrow sign. New bulbs, letters. Hale Signs. Call FREE 1-800-626-7446, anytime.

Misc. Wanted 115

CASH PAID FOR Old books, magazines, baseball cards and comics. Curious Used Book Shop, 307 E. Grand River, East Lansing, 332-0112.

CASH for non-working color portable TV's made after 1974. 321-3160.

HAVE an old camera laying around? I buy them- any condition. 482-3082.

MAPLE RAPIDS LUMBER MILL, INC.- Rt. 1, St. Johns. Buyers of timber of all types (cash in advance). Phone 517-682-4225 or 517-682-4164.

OLD POSTCARDS, buttons, etc. wanted. Paying generously. Will pick up. Perry, 675-5474.

WANTED- Standing timber and walnut. Best prices paid. 517-566-8914, 517-566-8556.

Musical Instruments 116

BADLY Needed- Used piano for rehearsal and performance of Mudge's Folies. Call 627-5375.

INTERESTED in piano lessons? Call 627-8297. Able to teach all levels.

PIANO Tuning- estimates and repairs, music professor. 669-8085.

Office Equipment 117

FOR SALE: 12 Titus VDT's, \$800 each; 6 Xitron Mag 80's, \$200 each; 1 Compu-graphic Execuwriter II, \$1,000; Davidson Press \$1,500.; Compu-graphic 7200, \$800. Call Pete Cantine, Lansing Suburban Newspapers, 627-4001.

FOR SALE: Public address, amplifier, RCA 8 track player, mail machine, 3m 209 automatic copier, Bell and Howell 16 mm microfilm reader, manual typewriters. BIDS Accepted. May be viewed at downstairs of Towne Courier, 423 Albert Street, East Lansing.

Radio, TV, Stereo, 119
Tape Deck

GENERAL ELECTRIC VIR II, broadcast controlled color television. PEAKE ELECTRIC, 106 E. Bridge, Portland, 647-6300.

ODYSSEY 2 Computer- good shape. Includes 5 cartridges. \$175. 627-6278 after 2pm.

WANTED: Late model non-working TV's. Call 627-7891.

Ready to trade cars? Check classified for the best deals.

Sporting Goods 122

COLMAN CAMPING ICE CHEST. Excellent condition, like new. Large size. \$35. 332-8543 after 5pm.

FISHING SHOW
FOR EVERYONE
• Free •

Lansing Civic Center
Sat. Feb. 12, 2-7pm
Clinics - Lectures - Guides
Films - Charter Captains
Salmon - Trout - Walleye
Muski - Bass
NEW PRODUCTS - SALES

FOR ALL YOUR SHOOTING NEEDS

- Rifles, shot guns
- ammo & accessories
- Gunsmithing & home security items
- Knives & knife sharpening



Weekdays noon-8 pm Saturday 9-5 pm
3203 W. Saginaw, Lansing
next to Color Tile
321-2204

Tools 123

WANTED- 6" planer, bench drill press, band saw. Call 655-1922, after 5pm.

Absolutely Free 126

ABSOLUTELY FREE

All items offered in this "Absolutely Free" column must be exactly that. There is no charge for these listings. No charge items can appear with a free listing. No pets can be listed. Non commercial accounts only. Lansing Suburban Newspapers accepts no responsibility for actions between individuals regarding Absolutely Free Ads. Absolutely Free ads not accepted on Fridays and Tuesdays.

Pets 200-203

Pets 200

AIREDALE- Golden Lab mix puppies, tails docked. \$10. Phone 543-3385.

AKC Dachsund puppies and adult. AKC Doberman pup and mother. Pure bred poodle pups and AKC adult Bassetts. \$100. to \$150. Consider trades. 649-8543.

BLACK Lab and Springer mix pups. 6 weeks old \$5. 647-4519

COCKER SPANIELS- Red and white with nice markings. 2 males, 10 wks. AKC, wormed with shots. 627-5687.

FREE Puppies- Part Cocker Spaniel part Beagle. 3 females, 2 males. 627-3758.

FREE to good home one year old female white Samoyan /Golden Retriever. All shots, fixed. 627-9210

Golden Retriever puppies. Father AKC, mother eligible. 4 male, 2 female, 8 weeks old. \$75. 224-3662.

Farm 300-304

Horses & Tack 300

FOR SALE: Registered Arabian horses, mares, fillies, weaning stud colts. (517) 655-1015 after 6pm.

HORSE And Pony for sale. Both calm and gentle, excellent for beginners, both shown in 4-H. Reasonable to good home. 669-5929, after 4pm.

Farm Equipment & Accessories 301

FARMALL H Tractor, front end loader and blade for Farmall tractor, IHT 13 hole grain drill, Oliver 7' trailer mower with conditioner hitch. JD 896 rake, Massey Ferguson No. 10 Baler. 543-6865.

OLIVER 70 tractor- new rubber. \$700. Call after 5pm, 627-2652.

TRACTOR Radio, new, AM-FM, fender mount, slight defect. With antenna No TAF-8000, red. 1 in stock. Regular \$164.36 Special- \$79.68. Decker & Co. Inc., Monday thru Friday, 8am to 5pm. Phone 517-321-7231.

TRACTOR Tires and Duals- Farm and Field Service. We sell Firestone and other brands. We cover your area. Call us for competitive prices. (616)795-3772. 6am to 11pm. Swanson Tire.

Hay, Grain, Seed 302

FOR SALE- JUNE Clover Seed and 400 bales of clover hay. 647-7063.

Farmers, Buy your Hybrid Seed Corn direct. Prices from \$32- \$53. Try and compare. Optional \$750. commission for 100 bushel sales. No obligation. Five location, Write Robert Riggs, 3035 losco, Dansville, Michigan 48819.

HAY For Sale- 10% discount if picked up from truck Monday after 5pm and all day Tuesday. Phone 882-1611

Livestock, Poultry 303

GOATS 25- Togs, Nubs, Saanens, 3 good Tog bucks. Call 627-5504

Livestock, Poultry 303

FOR SALE: Fresh young broilers. 6-7 lbs. each. 90 cents per pound. Call 655-1856.

Announcements 400-413

Announcements & Notices 400

FULL PRINTING SERVICE
Available from Lansing Suburban Newspapers
Photo typesetting • Layout & Keylining • Artwork & Graphics • Camera • Screening-from start to finish
Specializing in preprints, newspapers, forms, brochures and more! Phone 627-4001 for free estimates. Ask for Mr. Cantine

NASHVILLE, Tennessee, Country music bus tour, Grand Ole Opry, March 17th-20th, 1983. \$189. Phone 517-224-9232, corrected phone number.

NEW Refunders Club forming, Delta Twshp. Area. For information call, 627-2091, Carol Marvin.

OBTAIN a Mastercard or Visa. Guaranteed even if you have bad credit. No credit, Divorced or even Bankrupt. For free Brochure send self-addressed stamped envelope to: Credit Research, P.O. Box 901953, Dallas, Texas. 75390-1953 or Call: 214-324-5944, 24 Hours.

WEDDING PLANS? Mike's photography and Deb's silk flowers can help. Reasonable rates. Compare and save. 627-5582 or 627-2835.

Bingo 401

ALL New Big Bingo, Kidney Foundation of Michigan, Friday mornings. Doors open 9a.m., Westland Hall, corner of Waverly and Saginaw.

A NEW TUESDAY BINGO, Safety Council, Golden Nugget, Frandor. Doors open 3:30pm.

A SUNDAY BINGO: Fraternal Order of Police, 742 N. Eifer, Mason, 676-4387, doors open at 11:30am.

BINGO (Starting September 13th!) Webberville Spartan Boosters, Webberville Community Hall, Monday nights, 7:30 to 10:00 pm. Earlybird 7:00 to 7:30 pm.

FRIDAY- NEW BINGO, 6pm, Coventry Hall, 1003 N. Cedar, Mason. Non-smoking room. American Lung Association- Huron Valley.

LANSING- Cystic-Fibrosis Bingo, 5-10:30p.m. Sunday, Waverly Community Room, 938 Waverly Road.

WEDNESDAY NIGHT BINGO, Golden Nugget, Frandor. Early Birds at 6:00. New Life Church.

FRIDAY BINGO, Safety Council, Golden Nugget, Frandor. Doors open 3:30p.m., Early Birds 6:15p.m.

SPONSORED by YWCA, held at corner of Saginaw and Waverly, Lansing. Doors open at 9a.m. Tuesday.

SPONSORED by the Bretton Woods Lions Club, 938 S. Waverly Rd., Lansing. Doors open at 5p.m. Tuesday.

SPONSORED by Eagle Lodge, 4700 N. Grand River, Lansing. Doors open at 6p.m. Wednesday.

Bingo 401

SPONSORED by the Ingham County Conservation League, 7534 Old River Trail, Lansing. Doors open at 6:15p.m. Tuesday.

SPONSORED by St. Michael's School, 325 Edward, Grand Ledge. Doors open 5:30p.m. Sunday.

SPONSORED by American Legion, Portland. Doors open at 5p.m. Tuesday.

STOCKBRIDGE Community Athletic Boosters Club; Saturday, 7 pm, High school cafeteria, 416 N. Clinton, Stockbridge.

THURSDAYS, 6:00 pm; Coventry Hall, South of Holt. American Lung Association of Michigan.

Card of Thanks 403

THE Family of Russell and Marjorie Orr wishes to thank the people of Bath, DeWitt, and all Lansing Area communities for all their assistance in the past month. The many contributions of food, money, and transportation are greatly appreciated as well as the many other ways in which people expressed their love and support. A special thank you is due to Wanda Wilson, Elaine Hansen, Jean Barnett, and Sandy and Gerry Ide for their many organizational efforts and to the employees of Fisher Body for their financial contributions to the family.

Legal Services 407

ATTORNEY FEES: Bankruptcy, \$250-\$60 costs; Divorce, uncontested \$150-\$60 costs, with children \$200-\$60 costs, Simple wills \$25; Joint wills \$40. Wilfred Dupuis, 920 S. Washington, Suite 1-M, Lansing, Michigan, 48910. Phone 372-0410.

Lost & Found 408

FOUND- Dark gray male cat with thick dark stripe down back, approx. 1 year old. Found at restaurant in Portland. Call 616-887-8816 days, 616-363-1377 evenings.

FOUND on Grand Ledge Hwy. - Springer Spaniel, liver and white colored, male, collar- no tags, 3 to 4 yrs. old. Call 627-2493.

LOST- Male Irish Setter, 2-04-83, 7 years old, lost b/w. St. Johns and Clair on 27, name Rebel, brown collar. Call collect 548-1969. Reward.

LOST Or Stolen- Two dogs. Male Samoyed, white. Female Dalmatian cross. Both wearing blue nylon collars. Eaton County tags. Mulliken, 649-8891.

LOST- Portland- 5 month old female Beagle. Reward. Phone days, 647-4181; nights, 647-7157.

Personals 409

A Singles Club for people of all ages. Lansing Singles Club 332-6238.

NEED A FRIEND? A date? Someone to share your personal interests? Designed for rural and suburban residents. Write for application F.I.N.D., Services; P.O. Box 131; Nashville, MI. 49073.

WANTED: Big brother for 14 year old boy who enjoys the outdoors. Call Chris. 627-8145.

Armchair shopping? You get it with classified.



Valentine Ads 935

BABOO: I love you forever. Your Nani Chuckley.

GRANDMA And Grandpa Bowen, you're so far away, we miss you everyday. So we just want you to know our love for you will grow and grow.

Happy Valentine's Day Butch and Baldy Love Sunshine and Widdler Wits

Happy Valentine's Day Nibble Nuts Love W.W.

Garold- I love you more than words can say. Happy Valentines Day, Jeanenne.

Violets are blue Roses are red You know I love you. My husband-hosehead

TO PGF: "Here I am" Happy Valentine's Day. From MJ.

WE LOVE YOU MOM and DAD I love Deb, Danna and John

HAPPY Valentines Day to my 4th and 5th graders at East Olive School. Mrs. Hurwitz.

TO K.E. & P.- Violets are blue, roses are red. Happy Valentines from Dað the Hosehead, eh?

JEANENNE: Happy Valentine's Day- You are my life, your all I am. I love you now and forever. Love Garold.

To Ted
Roses are Red
Violets are Blue
If I must be in debt
I'm glad its with you!

Recreation, Hobbies, 411
Entertainment

LIVE Music- The Chessmen Variety band \$200. and up. Call Bob Jones. 313-629-0188.

Lose a pet or have a few too many? Let a classified ad help you.

AUTOMOTIVE SERVICE DIRECTORY

WE'RE THE BEST BUY AROUND!
Charlotte Republican Tribune
543-7555
Clinton County News
224-2361
DeWitt/Bath Review
627-4001
The Independent
627-4001
Review & Observer
647-7541

Service Directory rates available upon request
Service Directory deadline 4pm Monday

Air Conditioning 001

ATTENTION get sure-fire results with a classified ad in the Green Sheet classified auto service directory.

Body Repair & Painting 005

BOB'S AUTO BODY- Complete Collision Service. 224-2921, 1005 N. US-27.

RICHARD'S GARAGE: Used motors, transmissions, parts. Will haul junk cars. 7 days a week. Portland 647-2114.

Customizing 010

RESULTS and low cost two reasons to use classified often.
Call 627-4001.

Parts & Supplies 025

STARTERS And Alternators from \$19.95. Repair, sales, and service. The Starter and Alternator Shop, 111 S. Cedar (behind Clakins Paint). 484-6326.

Radio & Stereo 035

YOU get sure-fire results with a classified ad. Pick up the phone and start one working for you. Call 647-7541.

Reconditioning 040

WHEN YOU want a big return on your advertising dollar, invest in a classified ad in the auto service directory. Call 627-4001 to place your ad

Repair & Service 050

FOR TUNE UPS, carburetor rebuilding, all electrical problems, brakes and general car repair, call Lyle at Lyles Carburetor and Tune Ups. 627-5646 or stop in. We are in Eagle, 2 doors south of I-96 at the Eagle exit. Masters Certification.

CLASSIFIED ADS work. Put one to work for you in the auto service directory. Call 627-4001 to place your ad

COMPLETE O.G.'S AUTO RECONDITIONING
Winter Clean-Up \$49.95 Special
Reg. \$67.95
Complete wash, paste-wax and interior shampoo
PH. 321-4467
536 Elmwood, Lansing

Buy Now and Beat the Price Increase!
Michigan's No. 1 Andersen Window Dealer

By the carload **SAVE 40% ON Andersen Windowalls**

ALL IN-THE-CARTON WINDOWS THESE ARE NOT SECONDS OR CLOSE-OUTS!

- 40% off suggested list price
- Other sizes available
- Installation available
- Terms - Cash
- Cut Off Date - Feb. 12
- Arrival Date - March 4

NARROWLINE DOUBLE-HUNG				
Unit Number	Rough Opening	Unit List Price	SALE PRICE	
2432	30 1/8x41 1/4	139.28	83.56	
3032	38 1/8x41 1/4	157.80	94.68	
28310	34 1/8x49 1/4	162.50	97.50	
30310	38 1/8x49 1/4	172.22	103.33	
1842	22 1/8x53 1/4	143.01	85.80	
2042	26 1/8x53 1/4	148.90	89.34	
2442	30 1/8x53 1/4	159.29	95.57	
2842	34 1/8x53 1/4	171.16	102.69	
3042	38 1/8x53 1/4	182.06	109.23	
2446	30 1/8x57 1/4	166.32	99.79	
3446	42 1/8x57 1/4	200.10	120.06	
3846	46 1/8x57 1/4	212.29	127.37	

CASEMENT WINDOWS				
Unit Number	Rough Opening	Unit List Price	SALE PRICE	
C13	24 5/8x36 1/2	128.13	76.88	
C23	48 1/2x36 1/2	252.67	151.80	
CX 135	28 7/8x41 3/8	151.50	90.90	
C235	48 1/2x41 3/8	273.25	163.95	
CX235	57 x41 3/8	296.63	177.97	
C24	48 1/2x48 1/2	300.16	180.09	
C15	24 5/8x60 3/8	176.15	105.	

Employment 500-503

Help Wanted 501

COMBAT Arms! You supply the spirit, we'll supply the rest. For example, if you are presently a high school junior, senior, or college student, and qualify, we can offer you an excellent leadership training program, a \$2,000.00 cash bonus or, as an option, up to \$4,000.00 in educational assistance. In addition, you may qualify for our student loan repayment program. Charlotte's finest, "Charlie Battery" of the 1st Battalion, 119th Field Artillery, has a few select bonus qualified job openings. For the complete picture, call Jim Conway at (517)543-1410 or, in the evenings, toll free at 1-800-292-1386.

CRUISE SHIP JOBS! Great income potential. All occupations. For information call: 602-998-0426 Ext 4272.

DATA Processing Coordinator/Manager- Immediate opening for person with education and experience in Computer Science and Data Processing. At least one year programming experience on an IBM S-34 is mandatory. Competitive wages, excellent benefits. Send resume to: Director of Personnel Services, Carson City Hospital, 406 E. Elm St., Carson City, Michigan, 48811. (517)584-3131, ext. 277.

DISTRICT MANAGER Trainee earn while learning. Leslie home showings 517-647-4747.

ENJOY Cooking, like people? Kitchen Art Inc., a growing Lansing based company needs women to do demonstrations and exchange ideas. Excellent income opportunity. Call Janet, 349-3090 or Jerri Lynn, 626-6975.

HELP Wanted-Temporary Earn \$60. to \$100. Must have lived in Lansing Area 5 Years. Kitchen Art Inc., 485-9287.

JOBS OVERSEAS- Big money fast. \$20,000 to \$59,000 plus per year. Call 1-716-843-6000 ext 4039.

NOW ACCEPTING applications at Big D Restaurant, in Portland. Must be 18 years old.

R.N. SUPERVISOR- Section Chief- To manage W.I.C. Nutrition, E.P.S.D.T. Medicaid screening and family planning programs. Staff of 17 provides services from district public health department serving Clinton, Gratiot, and Montcalm counties. Established skills in supervision, program management required. Experience or interest in coordinating and developing comprehensive preventive services encouraged. Send resume to: Joseph Latoff, Health Officer, Main Office, Mid-Michigan District Health Department, 617 N. State Road, Stanton, MI. 48888- (517) 831-5203.

Help Wanted 501

QUEENSWAY to Fashion is hiring full or part-time. Show beautiful fashions at home shows. Free wardrobe. Car and phone needed. Act now 517-224-8732.

SECOND Income- Keep your fulltime job as wife and mother and still earn a weekly paycheck with Queens-Way. No investment, collecting, or delivery. Free supplies and training. Call 669-9346.

SELL THE BEST We're number 1 in cosmetics, fragrance, and jewelry. We're Avon. Call St. Johns, 224-8931 or Lansing, 482-6893.

TEXAS REFINERY Corp offers PLENTY OF MONEY plus cash bonuses, fringe benefits to mature individual in Lansing area. Regardless of experience, write A.E. Sears, Pres., Texas Refinery Corp., Box 711, Fort Worth, Texas 76101.

WANTED: Babysitter in my home. Own transportation. References. Lansing Mail area. Call 321-3991.

WANTED: Display advertising salesperson for Community Newspapers. Contact Bill Sliger, 517-627-4001.

WANTED: Housecleaning, hourly and daily basis, by two experienced persons. References in East Lansing area. Reasonable rates. Call 394-5336 after noon.

WANTED: Housecleaning position by experienced people. Also upholstery and carpet cleaning. Good References. 394-2946.

Situations Wanted 502

TO tired for housework? We'll do it for you. 663-8044.

WANTED: Housecleaning, hourly and daily basis, by two experienced persons. References in East Lansing area. Reasonable rates. Call 394-5336 after noon.

WANTED: Housecleaning position by experienced people. Also upholstery and carpet cleaning. Good References. 394-2946.

Child Care 503

BABY And Child care by registered nurse in her home. Call 321-0749.

CHILD CARE- Lansing mail area. Infants and pre-schoolers. 321-3550.

LOVING Child Care in licensed Grand Ledge home, experienced. 627-4407.

LOVING EXPERIENCED child care. East Lansing, near MSU. 332-2261.

Financial 600-605

Money to Loan 601

IF YOU NEED money for investment purposes, consolidating bills, or pay off a land contract, we can help by refinancing your present home. Low Rates. Call Modern Mortgage Corporation 517-321-4800.

Transportation 900-926

Autos for Sale 900

BUICK 1975 Electra-2 door, fully equipped, drives great. \$850. Cook-Herriman, 6135 W. Saginaw, Lansing, 321-6900.

CAMARO 1975- dependable, new exhaust system, good tires. Call after 7pm. 627-4434.

CHEVETTE 1978 auto, four door, good condition. \$2,000 or best offer. 543-3385.

CITATION 1980-4 door, 4 cylinder, automatic, rear defogger, AM radio. 43,000 miles. 1 owner. \$3495. Fowler Chevy-Olds, 1616 Lansing Road, Charlotte, 543-0200.

CUTLASS 1972- good condition, \$1,200. Call Pete at 321-0247.

CUTLASS 1973 Supreme 2 door, Fully equipped, runs and drives good. \$950. Cook-Herriman, 6135 W. Saginaw, Lansing, 321-6900.

CUTLASS SUPREME Brougham 1981, Diesel, 21,000 miles, \$7,000. 482-4295.

CUTLASS Salon 1979-4 door, 231 V-6, automatic, power steering, power brakes, AM radio. 40,000 miles. \$3995. Fowler Chevy-Olds, 1616 Lansing Road, Charlotte, 543-0200.

DATSUN 1977 B210- Good runner, \$950. Cook-Herriman, 6135 W. Saginaw, Lansing, 321-6900.

FOR Sale- 1976 Suburban Sierra Classic, good condition. Call 647-4830.

OLDS Cutlass Supreme 1979- power brakes and power steering, cruise, AM-FM stereo. Rally wheels, completely rust-proofed, 42,000 miles. No rust, runs good. \$4400. Call 627-9884.

PLYMOUTH 1978 stationwagon, three seat, 63,000 miles. \$1795. 669-6795.

TransAm 1980, 28,000 miles, AM-FM tape, rust proofed, A-1. \$6800. firm. 647-4923, before 3pm.

VW Rabbit- 1981, LS Diesel, 4 door, many options, low mileage, 50-mpg. A-1 condition. \$6100. 626-6847.

Autos Wanted 901

JUNK CARS: Junk and disabled cars wanted. Top dollar paid. 393-4173.

O.G.'S PAYS CASH for late model used cars and trucks. 536 Elmwood, across from Meijer Store. 321-4467.

Auto Parts & Service 902

BATTERIES for car and truck. Rebuilt with warranty exchange. \$19.95. New interstate batteries 10% below wholesale. Up to 60 month warranty. Square Die Auto Supply, Mason, 694-1923.

Auto Parts & Service 902

DYNCO- Pathfinder Truck Blades NEW- 1-7/8" for Ford-F250 4w.d. under hood elec. Lift Complete. Regular- \$1589. Special- \$829.50. 1-7/8" for Ford-F150 4w.d. under hood elec. Lift Complete. Regular- \$1589. Special- \$829.50. 1-7/8" for Jeep CJ-5 4w.d. under hood elec. Lift Complete. Regular- \$1589. Special- \$829.50. Decker & Co. Inc., Monday-Friday, 8am to 5pm. Phone 517-321-7231.

GOOD, used snow tires. Most sizes, while they last, \$30 to \$40 per set. Used parts also. Square Die Auto Supply, Mason, 694-1923.

FORD Engine 302- Must sell, call now for a bargain. \$125. 543-6903.

TWO Firestone steel belted radial tires. Size P-175-70-13. \$15. each. Phone 323-2081.

Heavy Equipment 905

580 CASE backhoe, \$8,000. 680C Case backhoe, \$10,000. G-100 Kamo horizontal boring machine, \$4,000. Cleveland 80W backfiller, \$1,500. Call 321-0247 ask for Pete.

Motorcycles 908

YAMAHA 650 Maxim, 1981, excellent condition. Call today, 224-6032.

Trucks, Trailers 909

FOR SALE: 1959 Chevy Pick-up and 1967 Chevy Van. Both excellent shape. 627-8910.

GMC 1973 3/4 Ton truck, excellent running condition. 647-7775.

MACK Cruiseiner 1976- C.O.E., 285 Maxidyne engine, 5 speed Maxitorque transmission. Tires, 10x20.00 rear and 11x22.5 front. AC. PS. Good condition. Extras. Call 531-5495.

Trucks, Trailers 909

PICKUP COVERS- \$199 up. Truck sliders, \$69 installed: running boards, \$89 up. B&L Cover MFG. US27 South-Pottsville 645-2200.

PINCOOR Generators: 1- GBH30H5 3000 watt, 120-240 volt to fit IHC- No. 86 thru No. 1650 garden tractors, Regular- \$589.63 Special- \$361.23. 1- GBH45H5 4500 watt 120-240 volt to fit IHC- No. 86 thru No. 1650 garden tractors. Regular- \$659.13 Special- \$400.23. 2- GBJD30H5 3000 watt 120-240 volt to fit JD No. 110 thru No. 216 garden tractors. Regular- \$572. Special- \$352. 1- RF37HM-1 3700 watt 120 volt, recoil start 8 h.p., Briggs and Stratton engine, portable home model. Regular- \$837. Special- \$511.80. Decker & Co. Inc., Monday thru Friday, 8am to 5pm. Phone 517-321-7231.

TRAILER Side Boards. NEW. 3 boards high for trailer 4'x8', treated lumber 27" high. Regular- \$142.75 Special- \$55.60. Decker & Co. Inc., Monday thru Friday, 8am to 5pm. Phone 517-321-7231.

Boats & Motors 916

WANTED: Pontoon boat trailer, good condition. Call 627-7891.

Motor Homes 920

FOR Rent- 1982 Born Free 24' mini. Sleeps 6. \$295. per week. Non-smokers only. Phone 641-4510 or 351-0764.

WANTED To Rent motor home, adults only, for week of March 31 thru April 8. Call 647-6304.

Snowmobiles 922

1975 Snowmobile- Evinrude. Electric start with reverse. Very good condition. \$550. 224-8853 anytime.

We Buy Cars!

SUNDANCE

East Saginaw Hwy. (M-43), Grand Ledge 627-4051

When you need repairs around the home—and you need them fast—check the business and service directory in classified.

Increase Your Business with a GreenSheet GreenBack!

Call Mona at 627-4001 to place your ad

\$99 OVER DEALER INVOICE! 11.9% FINANCING!

\$500,000 INVENTORY REDUCTION

All 1982 & 1983 Ford and Mercury Cars and Trucks (In stock as of Feb. 1, 1983) WILL BE SOLD FOR '99 OVER FACTORY INVOICE (Feb. 1, 1983 to Feb. 28, 1983)

11.9% Financing Available Over 50 vehicles to Select From

<p>Sik #M176 1983 GRAND MARQUIS 4 DR. Retail \$12,873.00 Discount 1741.57 Invoice 11,131.43 Profit 99.00 You Pay \$11,230.43 "LOADED WITH EVERYTHING"</p>	<p>Sik #F420 1983 LTD 4 DR. Retail \$9369.00 Discount 1204.90 Invoice 8164.01 Profit 99.00 You Pay \$8263.01 "PERFECT FAMILY CAR"</p>
<p>Sik #F418 1983 ESCORT 2 DR. Retail \$6008.00 Discount 389.93 Invoice 5618.07 Profit 99.00 You Pay \$5717.07 "FRONT WHEEL DRIVE"</p>	<p>Sik #T324 1983 F100 4x2 Retail \$7846.00 Discount 1032.69 Invoice 6813.31 Profit 99.00 You Pay \$6912.31 "6 CYL. 3 SPD"</p>
<p>Sik #T347 1983 F250 4x4 Retail \$10,873.06 Discount 1466.30 Invoice 9406.76 Profit 99.00 You Pay \$9505.76 "EQUIPPED W/MANY EXTRAS"</p>	<p>Sik #T332 1983 F100 4x2 Retail \$8548.00 Discount 1059.03 Invoice 7488.97 Profit 99.00 You Pay \$7587.97 "6 CYL. AUTO & MORE"</p>
<p>Sik #F414 1983 MUSTANG 2 DR. Retail \$7396.00 Discount 495.95 Invoice 6900.05 Profit 99.00 You Pay \$6999.05 SPORTY GOOD MPG</p>	<p>Sik #T335 1983 RANGER DIESEL Retail \$8140.98 Discount 846.33 Invoice 7294.65 Profit 99.00 You Pay \$7393.65 "GREAT MPG & DIESEL ENG"</p>
<p>Sik #F424 1983 FAIRMONT 4 DR. Retail \$7483.00 Discount 582.14 Invoice 6900.86 Profit 99.00 You Pay \$6999.86 AUTOMATIC AND EXTRAS</p>	<p>Sik #T352 F150 CARGO VAN Retail \$9821.40 Discount 1293.74 Invoice 8527.66 Profit 99.00 You Pay \$8626.66 "6 CYL. AUTO & MORE"</p>

NO GIMMICKS Don't Be Fooled By Other Dealer Specials

Open 8:30-6 p.m. Mon-Fri
Open 8:30-8 p.m. Mon & Wed
Open 8:30-2 p.m. Saturday

See Us Before You Buy-Nobody Beats A "KEY" Deal

KEY FORD-MERCURY INC.
1339 E. GRAND RIVER, PORTLAND, MI PHONE 647-7575

GREEN BACK FREE PIZZA

with this coupon Buy one 12" Pizza (with 3 items) at the regular price... Get one 12" Pizza (with the same 3 items) FREE!! Good Sun.-Thurs. Only!

647-4431 Fabiano's Restaurant & Bar 126 Kent St. 647-4437

PORTLAND

GREEN BACK JET AUTO WASH 50% OFF

130 S. Waverly, Lansing (less than a mile south of W. Saginaw)

ALL NEW SOFT CLOTH WASH \$3 50% OFF

Turtle wax sealer \$1.50
Turtle polish wax \$3.00
Underguard \$1.50
Superwash (the "works!") \$6.50

Try our gentle new wash process for a finish like new.
w/coupon only - Expires February 27, 1983

GREEN BACK

GREEN BACK Rax RESTAURANTS

AFTER 4:00 P.M. DINNER SPECIAL

Taste the Rax Experience **5019 W. Saginaw** (across from MC Sporting Goods)

Purchase a Rax Roast Beef Sandwich, Order of Fries, and Medium Soft Drink For **\$2.25**

Cheese and tomato extra. Not valid with any other offer. Limit one coupon per customer per visit. Please present coupon when ordering.

KIDS "UNCLE ALLIGATOR" MEAL AVAILABLE - ONLY \$1.19

Coupon expires: 3/6/83

ANNUAL TAX SALE

SCHEDULE 'A' TAXES OF 1980 AND PRIOR YEARS

In the Matter of the Complaint of the State Treasurer of the State of Michigan, for and in behalf of said State, for the sale of certain lands for taxes assessed thereon.

On reading and filing the complaint of the State Treasurer of the State of Michigan praying for a judgment in favor of the State of Michigan, against each parcel of land therein described, for the amounts therein specified, claimed to be due for taxes, interest and charges on each such parcel of land, and that such lands be sold for the amounts so claimed by the State of Michigan.

It is ordered that said complaint will be brought on for hearing and judgment at the March term of this Court, to be held at St. Johns in the County of Clinton, State of Michigan, on the 7th day of March A.D. 1983 at the opening of the Court on that day, and that all persons interested in such lands or any part thereof, desiring to contest the lien claimed thereon by the State of Michigan, for such taxes, interest and charges, or any part thereof, shall appear in said Court, and file with the clerk thereof their objections thereto on or before the first day of the term of this Court above mentioned, and that in default thereof the same will be taken as confessed and a judgment will be taken and entered as prayed for in said complaint. And it is further ordered that in pursuance of said judgment the lands described in said complaint for which a judgment of sale shall be made, will be sold for the several taxes, interest and charges thereon as determined by such judgment, on the first Tuesday in May thereafter, beginning at 10 o'clock a.m. on said day, or on the day or days subsequent thereto as may be necessary to complete the sale of said lands and of each and every parcel thereof, at the office of the County Treasurer, or at such convenient place as shall be selected by him at the county seat of the county of Clinton, State of Michigan; and that the sale then and there made will be a public sale, and each parcel described in the judgment shall be separately exposed for sale for the total taxes, interest and charges, and the sale shall be made to the person paying the full amount charged against such parcel, and accepting a conveyance of the smallest undivided fee simple interest therein; or, if no person will pay the taxes and charges and take a conveyance of less than the entire thereof, then the whole parcel shall be offered and sold. If any parcel of land cannot be sold for taxes, interest and charges, such parcel shall be passed over for the time being, and shall, on the succeeding day, or before the close of the sale, be reoffered, and if on such second offer, or during such sale, the same cannot be sold for the amount aforesaid, the County Treasurer shall bid off the same in the name of the State.

Witness the Hon. Timothy M. Green, Circuit Judge, and the seal of said Circuit Court of Clinton County this 20th day of January A.D. 1983

Countersigned, Jane Swanchara, Clerk

STATE OF MICHIGAN IN THE CIRCUIT COURT FOR THE COUNTY OF CLINTON

In the Matter of the Complaint of the State Treasurer of the State of Michigan, for and in behalf of said State, for the sale of certain lands for taxes assessed thereon.

TO THE CIRCUIT COURT FOR THE COUNTY OF CLINTON

Robert A. Bowman, State Treasurer of the State of Michigan, respectfully shows unto the Court:

1. That he is the State Treasurer of the State of Michigan and makes and files this complaint under, by virtue of and pursuant to the provisions of Act No. 206 of the Public Acts of 1893, as amended, and Act No. 380 of P.A. 1965, as amended.

2. That Schedule A annexed hereto is the tax record required by the act first above mentioned and contains the description of all lands in the aforesaid county upon which taxes, which were assessed for the years mentioned therein, have remained unpaid for more than one year after they were returned as delinquent, the description of all lands in said county heretofore bid off in the name of the State and thus held and upon which taxes which were assessed subsequent to the tax for which such lands were sold to the State have remained unpaid for more than one year after they were returned as delinquent.

3. That extended separately in said schedule against each description of said lands therein contained are (a) the total amount of delinquent taxes upon said description for the non-payment of which the same may lawfully be sold at the next annual tax sale, (b) interest computed thereon as provided by law to the first day of May, next ensuing, (c) a collection fee of four per cent which shall be a minimum of \$1.00 as provided by Section 211.59, C.L. 1970, as amended, and (d) \$10.00 for expenses, all in accordance with the provisions of the act first above mentioned.

4. That all of the aforesaid taxes, interest and charges are valid, delinquent and unpaid, and have remained delinquent and unpaid for sufficient time to authorize and require, as provided by the foregoing acts, the sale of the aforesaid parcels of land against which they were assessed and are extended in said schedule at the next annual tax sale for the non-payment thereof, and that the said taxes, interest, collection fee and expenses so extended in said schedule against each parcel of land therein described constitute a valid lien upon each of the said several parcels of land described in said schedule as therein and against which extended in favor of the people of the State of Michigan, the payment of which lien this court may enforce as a preferred or first claim upon such lands by the sale thereof.

Wherefore your plaintiff prays:

a. That within the time provided by law this court may determine and adjudge that the aforesaid taxes, interest, collection fee and charges are valid and constitute a valid lien upon each of the said several parcels of land described in said schedule as therein extended;

b. That within the time provided by law this court make a final judgment in favor of the State of Michigan against each parcel of said lands for the payment of the several amounts of taxes, interest, collection fee and expenses as computed and extended in said schedule against the several parcels of land therein contained, and the amounts listed in the column headed "aggregate" shall constitute the amounts adjudged against the said several parcels, unless so amended by this court;

c. That said judgment provide that in default of the payment so ordered of the said several sums computed and extended against said lands in said schedule, the said several parcels of land, or such interest therein as may be necessary to satisfy the amount adjudged against the same, shall severally be sold as the law provides;

d. That your plaintiff may have such other and further relief in the premises as to this court may seem just and equitable.

And your plaintiff will ever pray, etc.

Dated: January 11, 1983

Robert A. Bowman State Treasurer of the State of Michigan for and in behalf of said State

Table with columns: Sale No., Description or Parcel, Years for Which Delinquent, Total of Taxes, Interest and Charges Due in Said Years, Dollars Cents. Includes Township of Bath T5N-R1W.

Table with columns: Sale No., Description or Parcel, Years for Which Delinquent, Total of Taxes, Interest and Charges Due in Said Years, Dollars Cents. Includes Township of Bath T5N-R1W and Villages of Bath.

Table with columns: Sale No., Description or Parcel, Years for Which Delinquent, Total of Taxes, Interest and Charges Due in Said Years, Dollars Cents. Includes Villages of Bath and Lovings West Side Plat.

Table with columns: Sale No., Description or Parcel, Years for Which Delinquent, Total of Taxes, Interest and Charges Due in Said Years, Dollars Cents. Includes Villages of Bath and Lovings West Side Plat No. 1.

(Continued on next page)

Table with columns: Sale No., Description or Parcel, Years for Which Delinquent, Total of Taxes, Interest and Charges Due in Said Years, Dollars Cents. Includes sections for Township of Dewitt, Forest Hills Subdivision, Walnut Estates No. 1, Walnut Estates No. 2, Walnut Estates No. 3, Prairie View Subdivision.

Table with columns: Sale No., Description or Parcel, Years for Which Delinquent, Total of Taxes, Interest and Charges Due in Said Years, Dollars Cents. Includes sections for Township of Dewitt, Country Meadows Estates, Idyl Crest Estates No. 2, White Oaks Subdivision, Boichot Acres No. 2, Boichot Acres No. 3, Chateau Hills, Boichot Acres No. 1, Walnut Estates No. 1, Walnut Estates No. 2, Walnut Estates No. 3, North Rosewood Acres Subdivision.

Table with columns: Sale No., Description or Parcel, Years for Which Delinquent, Total of Taxes, Interest and Charges Due in Said Years, Dollars Cents. Includes sections for Township of Dewitt, Dyers Subdivision, Ballantines Wee Farms, Dyers Subdivision, Supervisors Plat of Valley Farms No. 2, Wm. Leland Subdivision, Supervisors Plat of Valley Farms No. 1, Wm. Leland Subdivision, Supervisors Plat of Valley Farms No. 1, Northdale Farms, Bopp's Subdivision, Auto Park Subdivision, Section 34-35 TSN-R2W, Section 34-35 TSN-R2W, Section 34-35 TSN-R2W.

Table with columns: Sale No., Description or Parcel, Years for Which Delinquent, Total of Taxes, Interest and Charges Due in Said Years, Dollars Cents. Includes sections for Township of Dewitt, 381 Beg 4423 ft N of SE cor of Sec 36 W 528 ft. S 132 ft. W 393 ft. N 247.5 ft. E 921 ft. S 115.5 ft. to POB, 382 W 1/2 of NW 1/4 of SW 1/4, Sec 36 exc PCRR R/W, 383 Beg at pt on S 1/8 in of Sec 36, 510 ft W of NS 1/4 in sd sec. W 534 ft. N 2005.5 ft. to SR/W of NYC RR, N 64 sec. W 591.4 ft. alg S in of NYCRR, S 2266 ft to POB, 385 Beg 236 ft E of SW cor of E 2 1/2 of SW 1/4 of Sec 1 N 216 ft. E 200 ft. S 216 ft. W 200 ft to beg, 386 Com at SE cor of Sec 1 W 280 ft. N 675 ft. E 280 ft. S 675 ft to beg, 388 Com at stake at NW cor of N 1/2 of the SW 1/4 of Sec 6 run from stake S a dist of 12 1/2 Rds. E 8 Rds. N 12 1/2 Rds. W 8 Rds to beg, 389 E 1/2 of SE 1/4 of SW 1/4, Sec 8, 390 SW 1/4 of SE 1/4, Sec 8, 391 W 1/2 of SW 1/4, Sec 10, 392 Beg 306 ft N of E 1/4 cor Sec 11 N 194.18 ft. W 400 ft. S 194.18 ft. E to beg, 393 Com 1136.54 ft W of S 1/4 post Sec 11 N 1122 ft. S 29Deg 45Min 35Sec W 375.57 ft. W 103.80 ft M/L to Maple Riv SWly alg riv 250 ft M/L. S 60 Deg 14Min 25Sec E 164.55 ft S 29Deg 45Min 35Sec W 174.2 ft. S 172.4 ft. E 199.87 ft. S 217.94 ft to sec line. E to beg, 395 Com 396 ft E of NW cor of Sec 12 S 198 ft. E 132 ft. N 198 ft. W to beg, 396 Beg 330 ft E of NW cor Sec 12 E 66 ft. S 198 ft. E 132 ft. S to cen of Thomas Drn. Wly alg drn. to pt 330 ft E of sd. sec. in N to beg, 397 S 1/3 of E 3/8 of W 1/2 of SE 1/4 exc Ann Arbor RR R/W. Also com 48 Rds E of 1/4 post on S side of Sec. 12. N 18 Rds. to Ann Arbor RR. NW alg R/W 23 Rds 24 Links. S 29 Rds 2 Links to S sec line. E 21 Rds 2 Links to beg. All in Sec 12, 398 Lot 10, 399 S 48 Acres of W 1/2 of NE 1/4, Sec 15, 400 Beg 584 ft W & N 21Deg 18Min E 327.16 ft from E 1/4 post Sec 15 N 21Deg 18Min E 150 ft. N 68Deg 42Min W 673 ft to Maple Riv SWly 153 ft to line bearing S 68Deg 42Min E. 695 ft M/L to beg, 401 E 1/2 of NW 1/4, Sec 15 exc E 16 Rds of N 10 Rds & exc beg 898.5 ft S of N 1/4 post. S 295 ft W 245 ft. N 295 ft. E to beg, 402 W 1/2 of NE 1/4, Sec 17 exc W 270 ft of N 142 ft thereof, 403 W 1/2 of SE 1/4, Sec 17 exc beg at SW cor E 330 ft. N 660 ft. W 330 ft. S 660 ft to POB, 404 Parcel of land in NE corner of NE 1/4 of NW 1/4 of Sec 19, 12 Rds N & S by 40 Rds E & W, 405 Beg 724 ft S of NW cor of SW 1/4 of NW 1/4 of Sec 21 E 265 ft. N 132 ft to beg, 406 Beg at W 1/2 post Sec 22 E 1320 ft. S 680 ft. W 880 ft. S 198 ft. W 440 ft. N 858 ft to beg, 407 Beg at pt 1188 ft N from SW cor. Sec 22 N 594 ft. E 440 ft. S 594 ft. W 440 ft to beg, 408 Beg at pt 1188 ft N from SW cor. Sec 22 N 594 ft. E 440 ft. S 594 ft. W 440 ft to beg, 409 Beg 891 ft N of SW cor. E 198 ft. N 198 ft. W 198 ft. S 198 ft to beg, 410 S 1188 ft N of W 440 ft W 1/2 of SW 1/4 Sec 22 exc beg 891 ft N of SW cor. E 198 ft. N 198 ft. W 198 ft. S 198 ft to beg, 411 Com 54 Rds N of SW cor Sec 22 run E 12 Rds. N 12 Rds. W 12 Rds. S 12 Rds to beg, 412 E 100 Ac of NE 1/4 lying W & S of Maple River. Sec 31 exc 10 Ac in SE cor 25 Rds E & W by 64 Rds N & S, 413 W 1/2 of NE 1/4, Sec 32 exc com 29 Rds 4 1/2 ft E of NW cor sd parc. S 13 Rds. E 12 Rds. N 13 Rds. W 12 Rds to beg, 414 E 100 Ac of NE 1/4 lying W & S of Maple River. Sec 31 exc 10 Ac in SE cor 25 Rds E & W by 64 Rds N & S, 415 W 1/2 of NE 1/4, Sec 32 exc com 29 Rds 4 1/2 ft E of NW cor sd parc. S 13 Rds. E 12 Rds. N 13 Rds. W 12 Rds to beg, 416 All of SW 1/4 Sec 32 as lies E of Maple River, 417 W 1/2 of SE 1/4, Sec 32, 418 W 1/2 of SW 1/4, Sec 33, 419 Beg 990 ft W of SE cor Sec 34 W 145 ft. N 185 ft. E 145 ft. S 185 ft to beg, 420 S 1/2 of N 1/2 of NE 1/4, Sec 36, 421 Beg 150 ft W of S 1/4 post Sec 36 W 150 ft. N 350 ft. E 150 ft. S 350 ft to beg, 422 Beg 300 ft W of S 1/4 post Sec 36 W 150 ft. N 350 ft. E 150 ft. S 350 ft to beg, 423 Beg 450 ft W of S 1/4 post. Sec 36 W 150 ft. N 350 ft. E 150 ft. S 350 ft to beg, 424 N 5/8 of N 1/2 of SE 1/4, Sec 36 exc abt 1 A com 285 ft N of SE cor thereof, being 198 ft E & W by 219 ft N & S, 425 Com 1668.81 ft E of S 1/4 post. Sec 36 N 257.89 ft. W 151.96 ft. S 257.89 ft. E 151.96 ft to beg, 426 Lot 5, Block 1, 427 Lot 4 and W 40 ft of Lot 3 all in Block 4, 428 Com. 102 Rds N and 2 Rds W of SE corner of Sec 11 W 10 Rds N 4 Rds. E 10 Rds. S 4 Rds to beg, 429 Com. at SE corner of NE 1/4 of SE 1/4. Sec 11 W 15 Rds. N 4 Rds. E 15 Rds. S 4 Rds, 430 Beg 26 Rds 6 Links South of 1/4 post on West side of Sec 12 East 13 Rds. North 138 ft. West 13 Rds. South 138 ft. to beg, 431 Com. 6 & 2/3 Rds N of NW corner of Lot 10, Blk 11, Vandeusens Add. E 12 Rds. N 3 & 1/3 Rds. E 2 Rds. N 2 Rds. W 14 Rds. S 5 & 1/3 Rds to beg, 432 Com. 24 22 5/8 Chn. E of NW corner of Sec 13 S 5 1/2 Chn. E 1 Chn. N 5 1/2 Chn. W 1 Chn, 433 Com. 58 Rds E & 2 Rds S of NW corner of Sec 13 S 10 Rds. E 4 Rds. N 10 Rds. W 4 Rds to beg, 434 Com. 429 ft S & 345 ft E of NW corner of Sec 13 E 69 ft. S 240 ft. W 69 ft. N 240 ft to beg, 435 Com 140 ft N of W 1/4 post of Sec 13 N 124 ft. E 330 ft. S 124 ft. W 330 ft to beg, 436 Com 140 ft N of W 1/4 post of Sec 13 N 124 ft. E 330 ft. S 124 ft. W 330 ft to beg, 437 Beg 150 ft W of S 1/4 post Sec 36 W 150 ft. N 350 ft. E 150 ft. S 350 ft to beg, 438 Beg 450 ft W of S 1/4 post. Sec 36 W 150 ft. N 350 ft. E 150 ft. S 350 ft to beg, 439 Beg 51 ft E of SW cor of NE 1/4 of SE 1/4 of Sec 35 E 81 ft N to RR. SW alg RR to pt due N of beg S to POB, 440 Beg 617.75 ft W of SE cor of NE 1/4 of SE 1/4. Sec 35 W 131.75 ft. N 623.4 ft to RR. NE alg RR 151.9 ft. S 699.8 ft to beg, 441 Lot 14, 442 Lot 18, 443 Lot 17, 444 Lot 18, 445 Lot 17, 446 Lot 18, 447 Lot 17, 448 Lot 18, 449 Lot 17, 450 Lot 18, 451 Lot 17, 452 Lot 18, 453 Lot 17, 454 Lot 18, 455 Lot 17, 456 Lot 18, 457 Lot 17, 458 Lot 18, 459 Lot 17, 460 Lot 18, 461 Lot 17, 462 Lot 18, 463 Lot 17, 464 Lot 18, 465 Lot 17, 466 Lot 18, 467 Lot 17, 468 Lot 18, 469 Lot 17, 470 Lot 18, 471 Lot 17, 472 Lot 18, 473 Lot 17, 474 Lot 18, 475 Lot 17, 476 Lot 18, 477 Lot 17, 478 Lot 18, 479 Lot 17, 480 Lot 18, 481 Lot 17, 482 Lot 18, 483 Lot 17, 484 Lot 18, 485 Lot 17, 486 Lot 18, 487 Lot 17, 488 Lot 18, 489 Lot 17, 490 Lot 18, 491 Lot 17, 492 Lot 18, 493 Lot 17, 494 Lot 18, 495 Lot 17, 496 Lot 18, 497 Lot 17, 498 Lot 18, 499 Lot 17, 500 Lot 18.

Table with columns: Sale No., Description or Parcel, Years for Which Delinquent, Total of Taxes, Interest and Charges Due in Said Years, Dollars Cents. Includes sections for Village of Elsie, Bisho & Browns Re-Subd, Bordon D. Hicks Addition, Cobb, Randall & Woollis, Jonathan Hicks, Litchfields Addition, Meriam Subdivision, Sandstone Estates, Tillotsons Addition, Vandeusens Addition, Township of Eagle, Township of Elsie, Original Plat, River Ridge, Village of Eagle, Township of Essex.

(Continued on next page)

Sale No.	Description or Parcel	Years for Which Delinquent	Total of Taxes, Interest and Charges Due in Said Years Dollars Cents	Sale No.	Description or Parcel	Years for Which Delinquent	Total of Taxes, Interest and Charges Due in Said Years Dollars Cents	Sale No.	Description or Parcel	Years for Which Delinquent	Total of Taxes, Interest and Charges Due in Said Years Dollars Cents	Sale No.	Description or Parcel	Years for Which Delinquent	Total of Taxes, Interest and Charges Due in Said Years Dollars Cents	
TOWNSHIP OF VICTOR T6N-R1W ROYAL SHORES				TOWNSHIP OF WATERTOWN SECTIONS 1-36 T5N-R3W				CITY OF DEWITT T5N-R2W RIVER WOOD SUBDIVISION				CITY OF ST. JOHNS T7N-R2W				
(Continued from preceding page)																
820	Lot 112			901	NW 1/4 of Sec 19 exc 2.5 acre strip in SE cor thereof, exc 330 ft E & W by 1015.56 ft N & S in SW cor thereof, exc 660.35 ft N and S by 660.35 ft E and W in NE cor thereof	1980	3857.29	959	Lot 19	1980	217.30	1026	Blk 91, Lot 5	1980	905.06	
821	Lot 116	1980	152.50	902	Part of S 1/2 of SW 1/4 of SW 1/4 Sec 21 beg at pt on S in 893.8 ft E of SW cor N 200 ft E 421.9 ft S 200 ft to S in sd Sec W 421.9 ft to beg, exc W 210 ft thereof	1980	3857.29	961	Lot 63	1980	353.80	SECTION 9-77N-R2W				
822	Lot 150	1980	159.29	904	W 1/4 of NE 1/4 of Sec 25	1980	90.96	962	Lot 62	1980	353.80	1027 Sec 9 Land com on NW cor thereof, S 20 rds, E 32 rds, N 20 rds, W 32 rds to beg.				
823	Lot 151	1980	98.20	905	E 1/2 of NW 1/4, Sec 25	1980	864.02	963	Lot 51	1980	362.09	1028 Sec 9 Com at NW cor Lot 22 Blk 4, Ave Add. N 339 ft, E 228 ft N 538.6 ft, W 228 ft, N 118.4 ft E 495 ft S 421 ft E 363.5 ft S 575 ft W alg N line Blk 4 Ave. Add. 868.5 ft to beg. Exc for land 150 ft N & S by 800 ft E & W out of SW cor exc com NW cor Sec 9, S 1092.72 ft on Sec line, E 674.8 ft at right angle to Sec line to P.O.B. of this exception, N 01 Deg 36' 30" E 180 ft N 88 Deg 13' 30" E 100 ft S 01 Deg 36' 30" W 180 ft N 88 Deg 13' 30" W 100 ft to P.O.B.				
824	Lot 180	1980	84.67	906	E 1/2 of SW 1/4, & S 5/8 of W 1/2 of SE 1/4, Sec 25	1980	2469.76	964	Lot 45	1980	345.52	1029 Comm at NW cor sec 9 E 504.71', S 41Deg30'E 607.37' to POB; S 41Deg30'E 233' S 49Deg17'24" W 206.25', W 136.8', N 54.79', N42Deg59' 08" W 98.77', N 48Deg57'E 270' to POB				
825	Lot 190	1980	98.20	907	Com at SW corner of NW 1/4 of SW 1/4, Sec 25 N on Sec. line 75 ft, E 234 ft S 75 ft, W 234 ft to beg.	1980	2983.32	965	Lot 44	1980	353.80	1030 Comm at NW cor of Sec 9 E 504.71', S 41Deg30'E 607.37', S 48Deg57'W 270' to POB; S 42Deg59'08" E 98.77' to POB; S 205', W 207.52', N 205', E 214.14' to POB				
826	Lot 196	1980	71.08	908	S 1/2 of SE 1/4 of SE 1/4, Sec 25	1980	557.37	966	Lot 230	1980	209.02	1031 Comm at NW cor Sec 9 S 1133.35' to POB, E 771.03', N 382.03', E 136.8', S 475', E 125.50', S 100', W 194.10', N 150', W 833', N 43' to POB				
827	Lot 205	1980	77.88	909	Com at irish N of W in of Sec 29 & cent of M-16 being 267 ft S of W 1/4 post S 209 ft, S 77Deg 10Min E 209 ft, N to cent of M-16, N 77Deg 10Min W 209 ft alg cent sd hwy to bg.	1980	1449.38	967	Lot 232	1980	66.91	1032 Comm at NW cor Sec 9 E 504.71', S 41Deg30'E 457.37', S 48Deg57'W 270' to POB; S 48Deg57'W 270', S 41Deg30'E 150', N 41Deg30'W 150', N 48Deg57'E 270' to POB				
828	Lot 209	1980	1054.75	910	Com at irish N of W in of Sec 29 & cent of M-16 being 267 ft S of W 1/4 post S 209 ft, S 77Deg 10Min E 209 ft, N to cent of M-16, N 77Deg 10Min W 209 ft alg cent sd hwy to bg.	1980	1082.77	968	Lot 232	1980	66.91	1033 Comm at NW cor Sec 9 E 504.71', S 41Deg30'E 457.37', S 48Deg57'W 270' to POB; S 41Deg30'E 150', S 42Deg59'08" E 98.77' to POB; S 205', W 207.52', N 205', E 214.14' to POB				
829	Lot 210	1980	105.00	911	E 1/2 of SE 1/4 of Sec 31 lying N of C&O RR R/W exc N 1326 ft thereof.	1980	1163.73	969	Lot 232	1980	66.91	1034 SW 1/4 of SW 1/4 Sec 16 exc Consumers ROW, exc com at NW cor Sec 16, E 160 ft, S 94 ft, W 160 ft, N 94 ft to POB, exc com at SE cor Lot 1 Blk 3 of Hurd & Sickle's S 94 ft, W 95 ft, N 94 ft, E 195 ft to POB; exc com 77.93 ft S & 66 ft E of SE cor Lot 1 Blk 3 of Hurd & Sickle's, E 183 ft, S 132 ft, W 183 ft, N 132 ft to POB exc com 160 ft S of SW cor Lot 7, E 137.5 ft, S 100 ft, W 137.5 ft, N 100 ft to POB exc Oak St.				
830	Lot 5	VICTORIA HILLS			912	Com 160 ft SEly from intersec of US-16 & Francis Rd, SEly 132 ft, N to pt 181 ft S of N sec. line of Sec. 34 W to pt N of pt of beg, S to beg.	1980	104.45	970	Lot 232	1980	66.91	1035 Par. of id. in SE 1/4 of NE 1/4 of Sec. 17 desc. as com. at E 1/4 cor of sd Sec. 17, N 89 Degrees 35' 30" W 270 ft to P.O.B. N 89 Degrees 35' 30" W 555 ft, N 210.20 ft, S 89 Degrees 35' 30" E 553.37 ft, S 0 Degrees 26' 30" E 211.20 ft to P.O.B.			
831	Lot 31	1980	227.11	913	Com 160 ft SEly from intersec of US-16 & Francis Rd, SEly 132 ft, N to pt 181 ft S of N sec. line of Sec. 34 W to pt N of pt of beg, S to beg.	1980	104.45	971	Lot 117	1980	378.66	1036 Par of id com 12 4/5 rds N and 233 ft W of SE cor of NE 1/4 Sec 17 W 592 ft, N 316 ft, E 592 ft, S 316 ft to POB				
832	Lot 32	1980	91.41	914	E 1/2 of SE 1/4 of Sec 31 lying N of C&O RR R/W exc N 1326 ft thereof.	1980	1163.73	972	Lot 158	1980	101.22	1037 Comm. 32 rds N and 25 rds W of 1/4 line Sec. 17 N 354.5 ft, W 412.83 ft, S 354.5 ft, E to POB				
833	Lot 35	1980	98.20	915	SE 1/4 of NE 1/4 of Sec. 35	1980	3956.42	973	Lot 156	1980	101.22	1038 Sec 17 Comm 264 ft W of E 1/4 post, S 165 ft, W 103 ft, S 157 ft, W 368.75 ft, N 82 ft, W 100 ft N 236 ft M/L, E to POB, exc comm at E 1/4 cor Sec 17 S 404.25 ft, W 585.30 ft, N 82 ft to POB; W 150.66 ft N 82 ft, E 151.32 ft, S 82 ft to POB				
834	Lot 36	1980	138.91	916	E 1/2 of SE 1/4 of Sec. 35	1980	3956.42	974	Lot 144	1980	101.22	1039 Sec 20, Com NE cor thereof, S 123.75 ft, W 184.31 ft, N 123.75 ft, E 184.31 ft to beg.				
835	Lot 38	1980	159.29	917	E 1/2 of SE 1/4 of Sec. 35	1980	3956.42	975	Lot 143	1980	304.04	1040 Sec 20 Com. 1617 ft S of NE cor thereof, S 188 ft, W 309.55 ft, N 188 ft, E 309.55 ft to POB.				
836	Lot 58	1980	138.91	918	E 1/2 of SE 1/4 of Sec. 35	1980	3956.42	976	Lot 165	1980	101.22	1041 NE 1/4 of E 1/2 of NE 1/4 Sec 21 Cont. 20 Ac				
837	Lot 69	1980	71.08	919	E 20 acres of NE 1/4 of NE 1/4, Sec. 36	1980	692.51	977	Lot 184	1980	101.22	1042 Sec 21 Com 736 ft S of NW cor Sec 21, E 330 ft, S 320 ft, W 330 ft, N 320 ft to POB				
839	Lot 76	1980	118.57	920	E 17 A of N 39 A of W 1/2 of NE 1/4, Sec. 36	1980	733.07	978	Lot 183	1980	92.94	1043 Par. of id com 12 4/5 rds N and 233 ft W of SE cor of NE 1/4 Sec 17 W 592 ft, N 316 ft, E 592 ft, S 316 ft to POB				
840	Lot 94	1980	105.00	921	Bg at N 1/4 post, S 1528 ft, E 738 ft, Nly 1530 ft, W 764 ft to bg, also E 1/2 of NW 1/4 also E 1/2 of SW 1/4, N of US 16 all in Sec. 36	1980	4959.78	979	Lot 172	1980	161.19	1044 Blk 2, Lot 9				
841	Lot 102	1980	132.11	922	Com. at SW corner of Sec. 36 N on sec. line 602 ft, N 88Deg 29Min E along S line of P.M. RR 1320 ft to E line of SW 1/4, S on 1/8 line 637 ft W on sec. line 1320 ft to beg.	1980	368.17	980	Lot 172	1980	161.19	1045 Blk 4, Lot 13 & W 1/2 of Lot 12.				
842	Lot 1	WESTCHESTER HEIGHTS			923	Com. at SW corner of Sec. 36 N on sec. line 602 ft, N 88Deg 29Min E along S line of P.M. RR 1320 ft to E line of SW 1/4, S on 1/8 line 637 ft W on sec. line 1320 ft to beg.	1980	368.17	981	Lot 172	1980	161.19	1046 Blk 4, Lot 14 & E 1/2 of Lot 15.			
843	Lot 13	1980	43.97	924	Com. at SW corner of Sec. 36 N on sec. line 602 ft, N 88Deg 29Min E along S line of P.M. RR 1320 ft to E line of SW 1/4, S on 1/8 line 637 ft W on sec. line 1320 ft to beg.	1980	368.17	982	Lot 172	1980	161.19	1047 Blk 4, Lot 14 & E 1/2 of Lot 15.				
844	Lot 34	1980	105.00	925	Com. at SW corner of Sec. 36 N on sec. line 602 ft, N 88Deg 29Min E along S line of P.M. RR 1320 ft to E line of SW 1/4, S on 1/8 line 637 ft W on sec. line 1320 ft to beg.	1980	368.17	983	Lot 172	1980	161.19	1048 Blk 4, Lot 14 & E 1/2 of Lot 15.				
845	Lot 35	1980	179.61	926	Com. at SW corner of Sec. 36 N on sec. line 602 ft, N 88Deg 29Min E along S line of P.M. RR 1320 ft to E line of SW 1/4, S on 1/8 line 637 ft W on sec. line 1320 ft to beg.	1980	368.17	984	Lot 172	1980	161.19	1049 Blk 4, Lot 14 & E 1/2 of Lot 15.				
846	Lot 49	1980	247.50	927	Com. at SW corner of Sec. 36 N on sec. line 602 ft, N 88Deg 29Min E along S line of P.M. RR 1320 ft to E line of SW 1/4, S on 1/8 line 637 ft W on sec. line 1320 ft to beg.	1980	368.17	985	Lot 172	1980	161.19	1050 Blk 4, Lot 14 & E 1/2 of Lot 15.				
847	Lot 58	1980	118.57	928	Com. at SW corner of Sec. 36 N on sec. line 602 ft, N 88Deg 29Min E along S line of P.M. RR 1320 ft to E line of SW 1/4, S on 1/8 line 637 ft W on sec. line 1320 ft to beg.	1980	368.17	986	Lot 172	1980	161.19	1051 Blk 4, Lot 14 & E 1/2 of Lot 15.				
848	Lot 67	1980	132.11	929	Com. at SW corner of Sec. 36 N on sec. line 602 ft, N 88Deg 29Min E along S line of P.M. RR 1320 ft to E line of SW 1/4, S on 1/8 line 637 ft W on sec. line 1320 ft to beg.	1980	368.17	987	Lot 172	1980	161.19	1052 Blk 4, Lot 14 & E 1/2 of Lot 15.				
849	Lot 68	1980	125.37	930	Com. at SW corner of Sec. 36 N on sec. line 602 ft, N 88Deg 29Min E along S line of P.M. RR 1320 ft to E line of SW 1/4, S on 1/8 line 637 ft W on sec. line 1320 ft to beg.	1980	368.17	988	Lot 172	1980	161.19	1053 Blk 4, Lot 14 & E 1/2 of Lot 15.				
850	Lot 69	1980	111.79	931	Com. at SW corner of Sec. 36 N on sec. line 602 ft, N 88Deg 29Min E along S line of P.M. RR 1320 ft to E line of SW 1/4, S on 1/8 line 637 ft W on sec. line 1320 ft to beg.	1980	368.17	989	Lot 172	1980	161.19	1054 Blk 4, Lot 14 & E 1/2 of Lot 15.				
851	Lot 76	1980	37.38	932	Com. at SW corner of Sec. 36 N on sec. line 602 ft, N 88Deg 29Min E along S line of P.M. RR 1320 ft to E line of SW 1/4, S on 1/8 line 637 ft W on sec. line 1320 ft to beg.	1980	368.17	990	Lot 172	1980	161.19	1055 Blk 4, Lot 14 & E 1/2 of Lot 15.				
852	Lot 77	1980	105.00	933	Com. at SW corner of Sec. 36 N on sec. line 602 ft, N 88Deg 29Min E along S line of P.M. RR 1320 ft to E line of SW 1/4, S on 1/8 line 637 ft W on sec. line 1320 ft to beg.	1980	368.17	991	Lot 172	1980	161.19	1056 Blk 4, Lot 14 & E 1/2 of Lot 15.				
853	Lot 79	1980	91.41	934	Com. at SW corner of Sec. 36 N on sec. line 602 ft, N 88Deg 29Min E along S line of P.M. RR 1320 ft to E line of SW 1/4, S on 1/8 line 637 ft W on sec. line 1320 ft to beg.	1980	368.17	992	Lot 172	1980	161.19	1057 Blk 4, Lot 14 & E 1/2 of Lot 15.				
854	Lot 82	1980	871.58	935	Com. at SW corner of Sec. 36 N on sec. line 602 ft, N 88Deg 29Min E along S line of P.M. RR 1320 ft to E line of SW 1/4, S on 1/8 line 637 ft W on sec. line 1320 ft to beg.	1980	368.17	993	Lot 172	1980	161.19	1058 Blk 4, Lot 14 & E 1/2 of Lot 15.				
855	Lot 96	1980	111.79	936	Com. at SW corner of Sec. 36 N on sec. line 602 ft, N 88Deg 29Min E along S line of P.M. RR 1320 ft to E line of SW 1/4, S on 1/8 line 637 ft W on sec. line 1320 ft to beg.	1980	368.17	994	Lot 172	1980	161.19	1059 Blk 4, Lot 14 & E 1/2 of Lot 15.				
856	Lot 103	1980	111.79	937	Com. at SW corner of Sec. 36 N on sec. line 602 ft, N 88Deg 29Min E along S line of P.M. RR 1320 ft to E line of SW 1/4, S on 1/8 line 637 ft W on sec. line 1320 ft to beg.	1980	368.17	995	Lot 172	1980	161.19	1060 Blk 4, Lot 14 & E 1/2 of Lot 15.				
857	Lot 104	1980	37.38	938	Com. at SW corner of Sec. 36 N on sec. line 602 ft, N 88Deg 29Min E along S line of P.M. RR 1320 ft to E line of SW 1/4, S on 1/8 line 637 ft W on sec. line 1320 ft to beg.	1980	368.17	996	Lot 172	1980	161.19	1061 Blk 4, Lot 14 & E 1/2 of Lot 15.				
858	Lot 112	1980	37.38	939	Com. at SW corner of Sec. 36 N on sec. line 602 ft, N 88Deg 29Min E along S line of P.M. RR 1320 ft to E line of SW 1/4, S on 1/8 line 637 ft W on sec. line 1320 ft to beg.	1980	368.17	997	Lot 172	1980	161.19	1062 Blk 4, Lot 14 & E 1/2 of Lot 15.				
859	Lot 114	1980	105.00	940	Com. at SW corner of Sec. 36 N on sec. line 602 ft, N 88Deg 29Min E along S line of P.M. RR 1320 ft to E line of SW 1/4, S on 1/8 line 637 ft W on sec. line 1320 ft to beg.	1980	368.17	998	Lot 172	1980	161.19	1063 Blk 4, Lot 14 & E 1/2 of Lot 15.				
860	Lot 115	1980	37.38	941	Com. at SW corner of Sec. 36 N on sec. line 602 ft, N 88Deg 29Min E along S line of P.M. RR 1320 ft to E line of SW 1/4, S on 1/8 line 637 ft W on sec. line 1320 ft to beg.	1980	368.17	999	Lot 172	1980	161.19	1064 Blk 4, Lot 14 & E 1/2 of Lot 15.				
861	Lots 118 & 119	1980	24.18	942	Com. at SW corner of Sec. 36 N on sec. line 602 ft, N 88Deg 29Min E along S line of P.M. RR 1320 ft to E line of SW 1/4, S on 1/8 line 637 ft W on sec. line 1320 ft to beg.	1980	368.17	1000	Blk 3, W 75 ft of Lot 7 and 8, Lot 9.	1980	5941.15	1065 Blk 4, Lot 14 & E 1/2 of Lot 15.				
862	Lot 133	1980	695.19	943	Com. at SW corner of Sec. 36 N on sec. line 602 ft, N 88Deg 29Min E along S line of P.M. RR 1320 ft to E line of SW 1/4, S on 1/8 line 637 ft W on sec. line 1320 ft to beg.	1980	368.17	1001	Blk 6 3/2 ft E & W by 15 ft, N & S out of SW cor of N 1/2 of Lot 6, Also W 35 1/2 ft of S 1/2 Lot 6.	1980	1140.13	1066 Blk 4, Lot 14 & E 1/2 of Lot 15.				
863	Lot 134	1980	24.18	944	Com. at SW corner of Sec. 36 N on sec. line 602 ft, N 88Deg 29Min E along S line of P.M. RR 1320 ft to E line of SW 1/4, S on 1/8 line 637 ft W on sec. line 1320 ft to beg.	1980	368.17	1002	Blk 7, N 1/2 of Lot 3	1980	1473.65	1067 Blk 4, Lot 14 & E 1/2 of Lot 15.				
864	Lot 141	1980	24.18	945	Com. at SW corner of Sec. 36 N on sec. line 602 ft, N 88Deg 29Min E along S line of P.M. RR 1320 ft to E line of SW 1/4, S on 1/8 line 637 ft W on sec. line 1320 ft to beg.	1980	368.17	1003	Blk 9, Lots 2 and 3 and N 1/2 of Lot 4 less W 75 ft of S 20 ft of Lot 3 and less W 75 ft of N 25 ft of Lot 4.	1980	1604.24	1068 Blk 4, Lot 14 & E 1/2 of Lot 15.				
865	Lot 143	1980	30.78	946	Com. at SW corner of Sec. 36 N on sec. line 602 ft, N 88Deg 29Min E along S line of P.M. RR 1320 ft to E line of SW 1/4, S on 1/8 line 637 ft W on sec. line 1320 ft to beg.	1980	368.17	1004	Blk 11, Lot 1 exc W 12 ft	1980	2413.19	1069 Blk 4, Lot 14 & E 1/2 of Lot 15.				
866	Lot 144	1980	84.67	947	Com. at SW corner of Sec. 36 N on sec. line 602 ft, N 88Deg 29Min E along S line of P.M. RR 1320 ft to E line of SW 1/4, S on 1/8 line 637 ft W on sec. line 1320 ft to beg.	1980	368.17	1005	Blk 19, W 1/2 of Lots 4, 5 & 6.	1980	826.40	1070 Blk 4, Lot 14 & E 1/2 of Lot 15.				