

CLINTON COUNTY BOARD OF COMMISSIONERS

Chairperson
Bruce DeLong
Vice-Chairperson
Zach Rudat

Members
Nicole Fickes
Brian Hurtekant
Robert Showers
John Andrews
Dwight Washington

COURTHOUSE
100 E. STATE STREET
ST. JOHNS, MICHIGAN 48879-1571
989-224-5120



Administrator/Controller
John F. Fuentes
Clerk of the Board
Debra A. Sutherland

AGENDA

CLINTON COUNTY BOARD OF COMMISSIONERS MEETING
Board of Commissioners Room, Courthouse
100 E. State St., Suite 2200, St. Johns

TUESDAY, FEBRUARY 24, 2026

- 9:00 a.m. Call to Order
Moment of Silence
Pledge of Allegiance
Roll Call
Approval of Agenda
Presentation of Minutes
- February 5, 2026 Board of Commissioners Special Meeting
- Communications
1. City of Ovid Notice of Public Hearing – PA 198 Industrial Facilities Tax Exemption Application
 2. Kalkaska County Resolution Supporting HB5152 and HB5153
 3. St. Joseph County Resolution Opposing any Legislation Preempting Local Control for the Construction of Data Centers/Battery Storage Facilities
 4. Washtenaw County Resolution Opposing Ballot Proposals that Would Impose Documentary Proof of Citizenship Requirements and Create Barriers to Voting in Michigan
 5. Washtenaw County Resolution in Support of Michigan House Bills 5152 and 5153
- 9:03 a.m. Administrator/Controller's Report
- 9:06 a.m. Public Comments (*limit of 3 minutes per speaker*)
- 9:21 a.m. Mid-Michigan District Health Department Update (*in person report*)
- 9:26 a.m. Retiree Health Care Trust Fund Annual Report
- 9:36 a.m. Broadband Update (*Guidehouse and Frontier (a Verizon Company)*)
- 9:46 a.m. PA116 Farmland Application:
- 2026-1, Gary Chant & Kevin Bailey, Olive Township, Section 17
- 9:50 a.m. Approval of Commissioners' Expense Accounts

- 9:51 a.m. COMMITTEE MEETING REPORTS:
- Ways and Means Committee Meeting – February 19, 2026
 - Human Resources Committee Meeting – February 19, 2026

10:01 a.m. Commissioners' Comments

Adjournment

PACKET INFORMATION IS CURRENT AS OF POSTING DATE. NOTE: ADDITIONAL INFORMATION MAY BE PRESENTED ON SCHEDULED AGENDA ITEMS. AGENDA ITEMS MAY ALSO BE ADDED DUE TO BUSINESS NEEDS. TO REQUEST ACCOMMODATIONS OR MATERIALS IN AN ALTERNATIVE FORMAT, PLEASE CONTACT ADMINISTRATIVE SERVICES AT 989-224-5120 OR VIA EMAIL AT ADMIN@CLINTON-COUNTY.ORG NO LATER THAN 48 HOURS PRIOR TO THE MEETING.

LINK to County YouTube Channel: <https://www.youtube.com/@ClintonCounty-MI>

**WAYS AND MEANS COMMITTEE
FEBRUARY 19, 2026 AT 9:00 A.M.
CLINTON COUNTY COURTHOUSE
BOARD OF COMMISSIONERS ROOM
100 EAST STATE STREET, ST. JOHNS, MI 48879**

1	9:00	CALL TO ORDER, ADDITIONS TO THE AGENDA
2	9:02	LIMITED PUBLIC COMMENTS (LIMIT OF 3 MINUTES PER SPEAKER)
3	9:05	TOWNSEND ROAD CAMPUS MASTER PLAN UPDATE (HOBBS + BLACK) – NO ATTACHMENT
4	9:35	PLANNING & ZONING: A) PLANNING & ZONING (FOLLOW UP FROM 2/5 SPECIAL BOC MTG) - NO ATTACHMENT: ➤ SCHEDULE DATE FOR NEXT MEETING TO CONTINUE DISCUSSION ➤ PROVIDE DIRECTION TO STAFF REGARDING INFORMATION REQUIRED FOR DISCUSSION B) LIVESTREAM MEETINGS (ADMINISTRATION) – NO ATTACHMENT
5	10:05	VEHICLE USE POLICY AMENDMENT (ADMINISTRATION)
6	10:10	AUDIT ENGAGEMENT LETTER AND TERMS (ADMINISTRATION)
7	10:15	TRI-COUNTY METRO NARCOTICS SQUAD PAYMENT (ADMINISTRATION)
8	10:20	OPIOID SETTLEMENT FUNDS GRANT AWARDS - QUARTERLY REPORTS (ADMINISTRATION)
9	10:25	MARCH 2026 OPEN MEETINGS AND EVENTS CALENDAR (ADMINISTRATION)
10	10:30	ACCOUNTS PAYABLE INVOICES PAID TOTALS
11	10:35	COMMISSIONERS' COMMENTS
12	10:40	ADMINISTRATOR'S REPORT
13	10:45	ANY OTHER BUSINESS

ADDITION TO AGENDA: SHERIFF – REQUEST TO APPLY FOR OHSP TRAFFIC GRANT – #3A

**HUMAN RESOURCES COMMITTEE
FEBRUARY 19, 2026 AT 10:00 A.M.
(OR IMMEDIATELY FOLLOWING THE WAYS AND MEANS COMMITTEE MEETING)
CLINTON COUNTY COURTHOUSE
BOARD OF COMMISSIONERS ROOM
100 EAST STATE STREET, ST. JOHNS, MI 48879**

1	10:00	CALL TO ORDER, ADDITIONS TO THE AGENDA
2	10:02	LIMITED PUBLIC COMMENTS (LIMIT OF 3 MINUTES PER SPEAKER)
3	10:05	PARKS AND GREEN SPACE – SEASONAL PARK STAFF (KYLE THORNTON)
4	10:15	HOLIDAY/EMPLOYEE APPRECIATION LUNCHEON REQUEST (ADMINISTRATION)
5	10:20	COMMITTEE/COMMISSION APPOINTMENTS (ADMINISTRATION)
6	10:30	HIRING PROCESS (COMMISSIONER FICKES)
7	10:45	COMMISSIONERS' COMMENTS
8	10:50	ADMINISTRATOR'S REPORT
9	10:55	ANY OTHER BUSINESS

- **ADDITION TO AGENDA: COUNTY CLERK/ROD REQUEST – #3A**

CLINTON COUNTY BOARD OF COMMISSIONERS

Chairperson
Bruce DeLong
Vice-Chairperson
Zach Rudat

Members
Nicole Fickes
Brian Hurtekant
Robert Showers
John Andrews
Dwight Washington

COURTHOUSE
100 E. STATE STREET
ST. JOHNS, MICHIGAN 48879-1571
989-224-5120



Administrator/Controller
John F. Fuentes
Clerk of the Board
Debra A. Sutherland

This meeting is posted to the Clinton County Meetings YouTube Channel: <https://www.youtube.com/@ClintonCounty-MI>

DATE 02/05/2026 The Clinton County Board of Commissioners met on Thursday, February 5, 2026 at 9:00 a.m. with Chairperson Bruce DeLong presiding.

MOMENT OF SILENCE AND PLEDGE OF ALLEGIANCE Chairperson DeLong called for a moment of silence. The pledge of allegiance was given to the flag of the United States of America.

ROLL CALL Roll was called with a quorum of the members in attendance: Nicole Fickes, Zach Rudat, Bruce DeLong, Brian Hurtekant, Robert Showers, John Andrews and Dwight Washington.

COUNTY PERSONNEL Todd Campbell and Eric Harger

VISITORS Kurt Wolf, Dan Smith, Greg Armbrustmacher, Jon Thelen, Jennings West, Lee Thelen, John Weber, Louis Faivor, Kevin Garvey, Dan Hufnagel, Joe Thelen, Maggie Sayles, Ramona Smith, Peggy Lidgard, Bob Ladiski, Donna Graham, Larry Kindel, Tanner White, Bruce Levey, Tyler Malkin, Pat Feldpausch, Nancy Hughson, Kathy George, Melany Mack, Nick McDonald, Tamra Ashley, Harmony Gmazel, Claudia Pluger, Jan Motz, Jennifer Tubbs and Amanda McClanahan

APPROVAL OF MINUTES The following minutes were presented for review and approval:

- January 27, 2026 Board of Commissioners Meeting
- January 27, 2026 Board of Commissioners Meeting Closed Session #1
- January 27, 2026 Board of Commissioners Meeting Closed Session #2

Chairperson DeLong noted a correction to the January 27, 2026 Board of Commissioners' meeting minutes on page 11, item 5 should reference "Grade 3 position" rather than "Grade 4 position".

BOARD ACTION: Commissioner Showers moved, seconded by Commissioner Fickes to approve the minutes as corrected. Motion carried.

AGENDA The agenda was presented for review and approval.

BOARD ACTION: Commissioner Hurtekant moved, seconded by Commissioner Washington to approve the agenda as printed. Motion carried.

INTRODUCTIONS Chairperson DeLong invited the panel of township representatives to introduce themselves, noting their name and the township represented.

Chairperson DeLong introduced MSU Extension Facilitators, Harmony Fierke-Gmazel, Outreach Specialist and Eric Walcott, Senior Specialist and provided an overview of the plan for today.

INPUT FROM TOWNSHIP
REPRESENTATIVES
REGARDING
PLANNING & ZONING
SERVICES

Representatives from townships utilizing county Planning & Zoning services offered the following comments:

- **Lebanon Township (Greg Armbrustmacher):**
 - Lacks the financial resources, staffing, and legal capacity to manage zoning and enforcement independently.
 - Already struggling to maintain other services.
 - Would need to seek voter approval of a millage to fund zoning locally.
- **Essex Township (Kathy George):**
 - Supports continuing countywide Planning & Zoning services for the remaining 10 townships.
 - Services are funded by county taxpayers and include liability insurance coverage.
 - Eliminating services would force townships to divert funds from essential services like parks and roads.
 - Cutting Planning & Zoning would undermine efforts to position the county as a regional leader.
- **Greenbush Township (Lee Thelen):**
 - Supervisor meeting included 13 townships (4 with their own zoning) and 3 zoning board members.
 - Broad agreement that county Planning & Zoning ensures uniformity and consistency.
 - Zoned townships did not object to taxpayer support for non-zoned townships.
 - Greenbush cannot afford to operate zoning independently and may not be able to offer it at all.
 - Raised concerns about losing countywide consistency, insurance coverage, and the rationale for eliminating services.
- **Duplain Township (Bruce Levey):**
 - Expressed appreciation for county Zoning services and emphasized countywide consistency.
 - Questioned whether other county offices generate revenue to offset costs.
 - Suggested the county could fund a full-time employee instead of a part-time consultant.
 - Cited an example of a township without zoning and expressed concern about that occurring in Clinton County.
- **Bingham Township (John Weber):**
 - Addressed concerns that the southern part of the county subsidizes services in the north.
 - Advocated for unity and maintaining county Planning & Zoning services.
 - Stated Bingham Township could not support zoning independently.
 - Emphasized continuity and the link between Planning & Zoning and community development.
 - Suggested exploring cuts in other areas if necessary and encouraged working together as a county.
- **Ovid Township (Jennings West):**
 - Cannot afford to operate its own zoning services.
 - Reported no prior issues with zoning services until a recent incident.
 - Emphasized the need for qualified personnel in the Zoning Department.
 - Expressed willingness for everyone to pay their fair share, if necessary.

- **Westphalia Township (John Thelen):**
 - Expressed agreement with the other supervisors.
 - Stated a preference for keeping zoning services at the county level.
- **Riley Township (Kevin Garvey):**
 - Supports standing together and maintaining Planning & Zoning responsibilities at the county level.
 - Expressed concern about the financial burden if townships were required to manage zoning independently.
 - Highlighted existing township expenses and revenue limitations.
 - Advocated for continuing centralized zoning services.
- **Olive Township (Lewis Faivor):**
 - Advocates for consistent, high quality zoning services across all communities.
 - Supports continued reciprocal support between the Township and the County.
 - Expressed concerns regarding additional financial obligations and expenses.

Representatives from townships offering their own services offered the following comments/statements:

- **Victor Township (Maggie Sayles):**
 - Noted that Victor Township has a Planning Commission but is not ordinance-driven.
 - Stated that the County Planning & Zoning budget represents less than 1% of the overall county budget.
 - Voiced concern about turnover in the Planning & Zoning Office Director position.
 - Emphasized the need to fill vacancies on the Planning & Zoning Board.
 - Reiterated the importance of unity, working together and the need for solutions.
- **Bengal Township (Nick McDonald):**
 - Noted that Bengal Township operates its own Planning & Zoning and that it is expensive.
 - Stated the township does not carry the liability coverage previously discussed.
 - Asked whether the County would assist townships in collaborating if County Planning & Zoning were dissolved.
 - Commented that administering Planning & Zoning is very time-consuming.
- **Dallas Township (Pat Feldpausch):**
 - Noted that Dallas Township has operated its own Planning & Zoning for seven years and expressed concern about not having umbrella insurance coverage, acknowledging that while things have been fine so far, one incident could create significant liability.
 - Asked whether townships with their own zoning could fall under the County's insurance umbrella.
 - Described the township as very rural and explained why the community chose to establish its own Planning & Zoning.
 - Questioned why it has taken at least three months to fill the Planning Commission positions and requested they be filled immediately.
 - Advocated for geographically equal representation on the Planning Commission.

- **DeWitt Township (Amanda McClanahan):**
 - Operates its own Planning & Zoning services, covering a wide range of needs from dense industrial in the SE tier to rural property in the northern tier.
 - Noted that providing these services requires significant work and funding.
 - Stated that DeWitt Township is experiencing growth.
 - Carries a \$2 million liability policy at a cost of \$200,000/year.
 - Expressed appreciation for and recognition of the importance of continuity in Planning & Zoning services.
 - Rely on the fact that neighboring units have Planning & Zoning services as it makes a difference.
- **Bath Township (Beth Botke):**
 - Echoed comments made by DeWitt Township.
 - Noted that Bath Township also carries its own insurance policy.
 - Operates its own Planning & Zoning, serving areas ranging from very complex to very rural.
 - Expressed appreciation that neighboring communities have Planning & Zoning services.
 - Highlighted the economic impact and potential effect on land values in communities without Planning & Zoning.
 - Stated a desire for county tax dollars to be used appropriately in a way that benefits all communities harmoniously, even those with their own Planning & Zoning.
- **Watertown Township (Jennifer Tubbs):**
 - Has maintained its own Planning & Zoning since 1986.
 - Experience different challenges than the northern part of the county and faces development pressure from expanding cities.
 - Partnered with DeWitt and Bath to create a sewer plant as a strategy to prevent annexation.
 - Referenced the presence of I-96 running through Watertown, creating unique challenges and needs.
 - Stated no direct stake in the issue other than supporting continuity, emphasizing that consistency benefits everyone.

FACILITATORS' RECAP

Questions were captured by facilitators:

- Why is zoning being targeted in this way?
- Could insurance policy apply across the county?
- Turnover in Planning Director role?
- If Planning Department dissolves, could the county continue insurance for townships?
- Why aren't positions being filled?

Recap of comments:

- In favor of keeping Planning & Zoning at the county level;
- Affordability issues at the township level;
- Uniformity;
- Continuity of services;
- Sustainable funding;
- Liability concerns;
- General cost;
- Southern tier been providing their own services and support continuity to the rest of the townships at the county level for their services;
- Concerns about costs and inability to absorb costs.

PUBLIC COMMENTS

Chairperson DeLong called for public comments. The following individuals offered public comments:

- Lee Thelen, Greenbush Township;
- Kurt Wolf, Ovid Township;
- Tammy Ashley, Victor Township;
- Donna Graham, Greenbush Township.

COMMISSIONERS' COMMENTS

Chairperson DeLong called for Commissioners' comments.

- Commissioner Washington expressed appreciation for the feedback and looks forward to the proposed solutions. He acknowledged the recent turbulence and emphasized the county's need to establish a clear, firm path forward. He noted that sustainability was a recurring theme in discussions about future decisions.
- Commissioner Andrews raised several questions regarding the Planning Commission issues, asking when they began. He noted ongoing conflicts, particularly around renewable energy, and observed that the situation seems to have escalated, resulting in staff turnover, threats, and other problems. He highlighted that most townships reported the lack of funds to manage their own Planning & Zoning, although Eagle Township does. He suggested that townships could collaborate to share responsibilities as a potential solution. Commissioner Andrews emphasized the need to understand why the county is struggling to hire and retain employees and expressed a strong desire to get to the root of the issues.
- Commissioner Fickes noted her experience serving on the Victor Township Planning Commission and as a township trustee, giving her insight into the pressures and rising costs involved. She emphasized that the most effective way to provide services is at the county level. She feels the question is not whether to continue to offer the services, but how to do so. She stressed the need to define the services structure before hiring a director and suggested determining how to restructure the department and its decision making body. She also noted the importance of making liability coverage available to all. Positions have not yet been filled because she believed this discussion needed to occur first.
- Commissioner Hurtekant expressed appreciation for everyone's input, noting the importance of hearing all perspectives. Noted the importance of the board to carefully review the matter, acknowledging that while Planning & Zoning is not required by law, but a service provided to make Clinton County a good county. Vacancies on the Planning Commission have not yet been filled as its important to address the current process first. Financial impact and overhead are primary concerns, and understanding the root causes of staff turnover—based on feedback from two departing employees—is a priority to help build a strong foundation in the office. Discussion also touched on the 10-acre rule and its role in land preservation. County finances were highlighted adding that these are factors the board should keep in mind.
- Commissioner Showers noted that staffing had not been an issue for the past 15 years, but the county was forced to address matters outside its core responsibilities, such as the chip plant and solar and wind energy projects. He expressed concern about solar projects, feeling they were rushed, and emphasized the need to ensure sufficient tax revenue to meet legal obligations; otherwise, a millage—borne by homeowners rather than businesses, factories, or farms—would be necessary. He highlighted that growth is occurring primarily in the five southern-tier municipalities comprising 55% of the population. He stressed that the county's responsibility is to increase tax revenue without harming the agricultural sector and that while further discussion amongst the commissioners is needed, all commissioners should carefully consider these issues.

- Commissioner Rudat, who lives in the county's smallest township, stated he does not have budget concerns but believes the Planning Commission applicant interest demonstrates value in maintaining the department. Echoed the comments about continuity and uniformity. He said the issue warrants further board discussion and raised questions about turnover and the possibility of shared insurance. His primary concern is ensuring decisions are made with a countywide perspective, noting that only two board members live in county zoned townships. He highlighted ongoing growth trends and the likelihood that the board's makeup will change in the future. Only 19 counties offer county managed planning and zoning services and most of them are very rural. Clinton County is in a unique position as a rural area experiencing rapid suburban growth, he said rural communities need to recognize "the writing on the wall", prepare for the future and maintain communication. He also shared a personal concern that many families his age would like to remain in a rural community but suitable housing is not available.
- Chairperson DeLong thanked everyone for their input, stated that all perspectives have been expressed, and indicated the discussion will continue at the next Ways & Means Committee meeting on Thursday, February 19.

ADJOURNMENT

BOARD ACTION: With no further business to come before the Board, Chairperson DeLong declared the meeting adjourned at 10:50 a.m.

Debra A. Sutherland

Debra A. Sutherland, Clerk of the Board

NOTE: These minutes are subject to approval on February 24, 2026.



City of Ovid

114 E Front St. PO Box 138, Ovid, MI 48866
PH: (989)834-5550 FAX: (989) 834-5254
www.ovidmi.org

February 11, 2026

Re: Notice of Public Hearing ~ PA 198 Industrial Facilities Tax Exemption Application

Property Address: 430 W Williams St Ovid MI 48866

Parcel Number(s): 580-000-043-010-00, 580-000-043-005-00, 580-000-043-015-00, and 580-120-001-001-00.

Dear Taxing Authority:

Please be advised that the City of Ovid has received an application for an Industrial Facilities Tax Exemption Certificate pursuant to Public Act 198 of 1974, as amended.

In accordance with Section 5(2) of Public Act 198, notice is hereby provided that a Public Hearing will be held as follows:

Date: Wednesday, March 4, 2026

Time: 7:00 PM

Location: Ovid City Hall, 114 E Front St, Ovid MI 48866

The applicant, MMPA, has requested an Industrial Facilities Exemption Certificate for the above-referenced property, located within the City of Ovid Industrial Development District. The proposed project will result in the construction of a new building for ultra filtered milk production with a total capital investment in the building and equipment estimated to be approximately \$48,487,900.

At the Public Hearing, all interested parties will be afforded an opportunity to be heard regarding the application.

If you have any questions or wish to provide written comments in advance of the hearing, please contact the City Clerk at 989-834-5550.

Sincerely,

Susan Tomasek Swan
Clerk, City of Ovid

CC: Clinton County
Clinton County RESA
Clinton Transit

Ovid-Elsie Area Schools
Ovid Public Library
Ovid Assessor

**THE KALKASKA COUNTY BOARD OF COMMISSIONERS
RESOLUTION 2026-03
SUPPORTING HOUSE BILLS 5152 AND 5153**

WHEREAS, at a Regular Meeting on January 21, 2026, the Kalkaska County Board of Commissioners; and

WHEREAS, House Bills 5152 and 5153 have been introduced in the Michigan Legislature to amend the Revised Judicature Act of 1961, providing critical protections for homeowners during mortgage foreclosure proceedings; and

WHEREAS, County Officials in Michigan have identified a pattern of predatory practices where third-party firms target vulnerable residents who are facing mortgage foreclosure; and

WHEREAS, these firms exploit homeowners and heirs by convincing them to sell either the property itself or their statutory rights to surplus foreclosure proceeds and redemption, often stripping residents of tens of thousands of dollars in home equity for a fraction of the true value; and

WHEREAS, County officials have witnessed firsthand these firms targeting vulnerable residents after an auction has concluded, including an instance where an elderly heir was paid \$100 to sign away her rights to over \$10,000 in known surplus proceeds; and

WHEREAS, these predatory activities not only harm homeowners, they create a significant and ongoing burden for County's departments statewide, including the Sheriff's Office, the Register of Deeds, the Probate Court, and the Corporate Counsel, which must expend public resources to manage fraudulent claims and improperly filed probate estates; and

WHEREAS, House Bill 5153 would directly stop this predatory model by making a mortgagor's right to surplus money and right of redemption non-assignable and non-transferable after a notice of foreclosure is recorded, except through legitimate testate or intestate succession; and

WHEREAS, House Bill 5152 would further protect homeowners by requiring a mandatory, plain-English "Notice of Rights" for any conveyance of property after a foreclosure notice is recorded, ensuring the seller fully understands they are waiving their rights to redemption, occupancy, and surplus proceeds; and

WHEREAS, the Counties across Michigan have identified the burdens created by these practices and are asking the Kalkaska County Board of Commissioners for a resolution of support for this vital legislation.

NOW, THEREFORE, BE IT HEREBY RESOLVED that the Kalkaska County Board of Commissioners fully supports House Bills 5152 and 5153, which will protect Kalkaska County residents and residents across the State of Michigan, from foreclosure fraud, preserve home equity for families, and reduce the burden on local government resources.

BE IT FURTHER RESOLVED that the County Clerk shall forward copies of this resolution to the Governor of the State of Michigan, the Majority Leader of the Michigan Senate, the Speaker of the Michigan House of Representatives, and all Michigan counties for their consideration and action and distribute to all County Clerks to be a posted communication in each county.

Commissioner Sieting Motioned to adopt Resolution 2026-03. Supported by Commissioner Matley.

Roll call:

Yeas: Sieting, Matley, Baldwin, Bicum, Comai, Persons, Fisher

Nays: None

Abstention: None

Absent: None

The Chairperson thereupon declared this Resolution approved and adopted by the Board of Commissioners of the County of Kalkaska this 21st day of January, 2026.

Kohn Fisher Jan 23rd 2026

Kohn Fisher, Chairperson

Kalkaska County Board of Commissioners

Deborah Hill

Deborah Hill, Kalkaska County Clerk

I hereby certify that the foregoing constitutes a true and complete copy of a Resolution adopted by the Board of Commissioners of the County of Kalkaska, Michigan, at a Regular Meeting held on January 21, 2026.

Deborah Hill

Deborah Hill, Kalkaska County Clerk

ST. JOSEPH COUNTY, MICHIGAN
BOARD OF COMMISSIONERS
OPPOSING ANY LEGISLATION PREEMPTING LOCAL CONTROL FOR THE
CONSTRUCTION OF DATA CENTERS/BATTERY STORAGE FACILITIES

RESOLUTION 01-2026

WHEREAS, data centers/battery storage facilities are large-scale industrial facilities that require substantial amounts of land, electricity, and water resources; and

WHEREAS, the growth of data center/battery storage facility development across the United States has placed increasing strain on local electrical grids, water supplies, and public infrastructure; and

WHEREAS, the construction and operation of data centers/battery storage facilities may negatively impact nearby residential communities through noise pollution, visual impacts, environmental degradation, and reduced quality of life; and

WHEREAS, data centers/battery storage facilities may conflict with the County's comprehensive plan, zoning ordinances, and long-term land use priorities; and

WHEREAS, the siting of data centers/battery storage facilities may limit future economic development opportunities by consuming land and utility capacity that could otherwise support more diverse, employment-generating uses; and

WHEREAS, residents of St. Joseph County have expressed significant concern regarding the cumulative impacts of data center/battery storage facility development on the environment, infrastructure, and community; and

WHEREAS, if local control is preempted, a county, township, city, or village would be unable to determine requirements for construction, operation, use, or maintenance of a data center/battery storage facility; and

WHEREAS, if a county already has a data center/battery storage facility policy, practice, regulation, rule, or ordinance on record, it may be null and void; and

WHEREAS, all other types of energy facilities, while regulated by the Michigan Public Service Commission, must adhere to local zoning,

NOW, THEREFORE, LET IT BE RESOLVED that the St. Joseph Board of Commissioners respectfully requests that the Michigan Legislators, in their respective Bodies, along with the Governor, expedite quickly action to repeal PA 233 and PA 235.

LET IT BE FURTHER RESOLVED that if subsequent legislation is considered relative to data centers/battery storage facilities and futuristic "Green Energy" programs that proper inclusion of Michigan townships, cities, and villages be included in the planning and construction to ensure

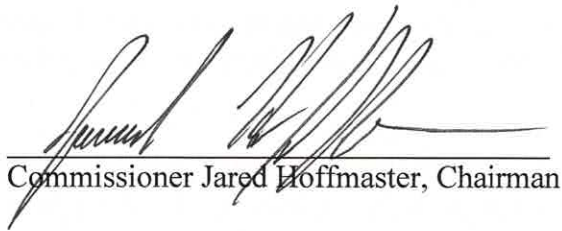
the safety of the Environment and appropriate measures be included to ensure proper restoration of the ecosystem.

AND FINALLY, that the appropriate Michigan Department be authorized to ensure restoration compliance upon the abandonment of the property.

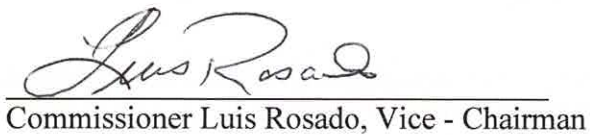
PASSED AND ADOPTED by the St. Joseph County Board of Commissioners on this 20 th day of January 2026.



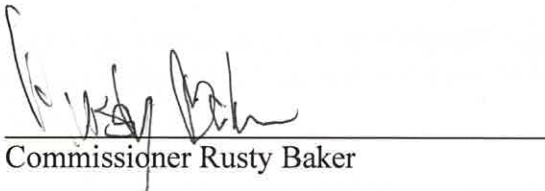
Gina Everson, St. Joseph County
Clerk/Register



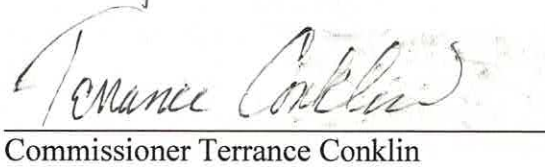
Commissioner Jared Hoffmaster, Chairman



Commissioner Luis Rosado, Vice - Chairman



Commissioner Rusty Baker



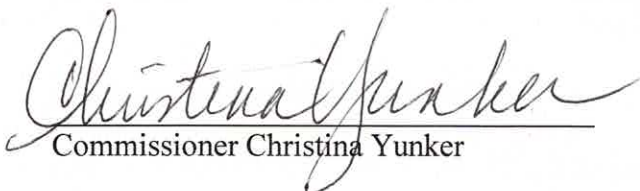
Commissioner Terrance Conklin



Commissioner Ken Malone



Commissioner Rick Shaffer



Commissioner Christina Yunker

A RESOLUTION OPPOSING BALLOT PROPOSALS THAT WOULD IMPOSE
DOCUMENTARY PROOF OF CITIZENSHIP REQUIREMENTS AND CREATE
BARRIERS TO VOTING IN MICHIGAN

WASHTENAW COUNTY BOARD OF COMMISSIONERS

JANUARY 21, 2025

WHEREAS, the right to vote is fundamental to our democracy, and the State of Michigan has a strong history of protecting that right while ensuring elections are secure, fair, and accessible for more than seven million active registered voters; and

WHEREAS, Michigan voters overwhelmingly approved pro-voter constitutional and statutory reforms in 2018 and 2022, expanding access to same-day voter registration, no-excuse absentee voting, and in-person early voting; and

WHEREAS, Michigan's election system has received national recognition for its integrity and accessibility, earning an A+ grade in the Institute for Responsive Government's Election Progress Report in both 2023 and 2024; and

WHEREAS, state and federal law already prohibit non-citizens from voting in Michigan elections, and existing safeguards ensure the security and integrity of the voter registration and election process; and

WHEREAS, an out-of-state special interest group is currently circulating a ballot proposal that would impose documentary proof of citizenship requirements, including requiring voters to present a birth certificate, passport, or other documents that citizens often face difficulty accessing such as tribal or military identification cards to prove their citizenship; and

WHEREAS, research indicates that nearly 700,000 Michiganders do not possess or do not have easy access to the documents that would be required under these proposals, with disproportionate impacts on married women, rural voters, low-income voters, people with disabilities, and older adults; and

WHEREAS, these proposals could result in eligible voters being improperly removed from the voter rolls or deterred from participating in elections, undermining public confidence and civic engagement;

NOW, THEREFORE, BE IT RESOLVED, that the Washtenaw County Board of Commissioners hereby opposes any ballot proposal or legislative effort that would impose documentary proof of citizenship requirements or otherwise create unnecessary barriers to voter registration and participation for eligible Michigan voters; and

BE IT FURTHER RESOLVED, that the Board affirms its support for Michigan’s existing election laws and constitutional provisions that have made the state a national leader in fair, secure, and accessible elections; and

BE IT FURTHER RESOLVED, that the Board calls on state leaders to reject policies driven by out-of-state interests that would undermine voter access and instead to protect the right to vote for all eligible Michiganders; and

BE IT FURTHER RESOLVED, that the Washtenaw County Board of Commissioners encourages voters to exercise care and seek full information about the potential consequences of ballot initiatives that would impose documentary proof of citizenship requirements prior to signing any petition or supporting such measures.

BE IT FINALLY RESOLVED, that a copy of this resolution be transmitted to the Governor of Michigan, the Michigan Secretary of State, and Washtenaw County’s state legislative delegation, and other Counties as a communication.

COMMISSIONER	Y	N	A	COMMISSIONER	Y	N	A	COMMISSIONER	Y	N	A
Beeman	X			Maciejewski	X			Somerville	X		
Hodge	X			Rabhi	X						
LaBarre	X			Sanders	X						
Lyte	X			Scott	X						

CLERK/REGISTER’S CERTIFICATE - CERTIFIED COPY

ROLL CALL VOTE: 9 0 0

STATE OF MICHIGAN)

I, Lawrence Kestenbaum, Clerk/Register of said County of Washtenaw and Clerk of Circuit Court for said County, do hereby certify that the foregoing is a true and accurate copy of a resolution adopted by the Washtenaw County Board of Commissioners at a session held at the County Administration Building in the City of Ann Arbor, Michigan, on January 21, 2026, as it appears of record in my office. In Testimony Whereof, I have hereunto set my hand and affixed the seal of said Court at Ann Arbor, this 22nd day of January 2026.

COUNTY OF WASHTENAW)^{SS.}

LAWRENCE KESTENBAUM, Clerk/Register



BY: _____

Brenden McArthur, Deputy Clerk

Res. No. 26-013



A RESOLUTION IN SUPPORT OF MICHIGAN HOUSE BILLS 5152 AND 5153

WASHTENAW COUNTY BOARD OF COMMISSIONERS

January 21, 2026

Prepared By: Elizabeth Schultz, Chief Deputy
Clerk/Register of Deeds

WHEREAS, the Office of the Register of Deeds is charged with maintaining accurate, accessible, and secure land records that form the foundation of real property ownership, economic development, and public trust in local governments; and

WHEREAS, predatory practices have been identified where third-party firms target vulnerable residents who are facing mortgage foreclosure and convince them to sell either their property or their statutory rights to surplus foreclosure proceeds and redemption for a fraction of the true value, often stripping residents of tens of thousands of dollars in home equity; and

WHEREAS, House Bills 5152 and 5153 have been introduced in the Michigan Legislature to amend the Revised Judicature Act of 1961, providing critical protection for homeowners during mortgage foreclosure proceedings; and

WHEREAS, House Bill 5153 would directly stop this predatory model by making a mortgagor's right to surplus money and right of redemption non-assignable and non-transferable after a notice of foreclosure is recorded, except through legitimate testate or intestate succession; and

WHEREAS, House Bill 5152 would further protect homeowners by requiring a mandatory "Notice of Rights" for any conveyance of property after a foreclosure notice is recorded, ensuring the seller fully understands they are waiving their rights to redemption, occupancy, and surplus proceeds; and

WHEREAS, the Michigan Association of Registers of Deeds recognizes that one of the roles of the Register of Deeds Office is to protect the property rights of the public and recognizes House Bills 5152 and 5153 are securing said rights.

WHEREAS, the Michigan Association of Registers of Deeds fully supports House Bills 5152 and 5153, which will protect State of Michigan residents from foreclosure fraud, preserve home equity for families, and reduce the burden on local government resources.

NOW, THEREFORE, BE IT RESOLVED that the Washtenaw Board of Commissioners are also in support of House Bills 5152 and 5153 which will safeguard Washtenaw's residents during the foreclosure process and lessen the strain on county resources.

BE IT FURTHER RESOLVED, that a copy of this resolution be transmitted to the Governor of Michigan, the Washtenaw County's state legislative delegation, and other Counties as a communication.

BE IT FINALLY RESOLOVED, the Washtenaw County Board of Commissioners directs the County Administrator to instruct the counties' contracted lobbying firm, GCIS, to advocate on behalf of this legislation in the Michigan House of Representatives and the Michigan State Senate.

COMMISSIONER	Y	N	A	COMMISSIONER	Y	N	A	COMMISSIONER	Y	N	A
Beeman	X			Maciejewski	X			Somerville	X		
Hodge	X			Rabhi	X						
LaBarre	X			Sanders	X						
Lyte	X			Scott	X						

CLERK/REGISTER'S CERTIFICATE - CERTIFIED COPY

ROLL CALL VOTE:


9 0 0

STATE OF MICHIGAN)

I, Lawrence Kestenbaum, Clerk/Register of said County of Washtenaw and Clerk of Circuit Court for said County, do hereby certify that the foregoing is a true and accurate copy of a resolution adopted by the Washtenaw County Board of Commissioners at a session held at the County Administration Building in the City of Ann Arbor, Michigan, on January 21, 2026, as it appears of record in my office. In Testimony Whereof, I have hereunto set my hand and affixed the seal of said Court at Ann Arbor, this 22nd day of January 2026.

COUNTY OF WASHTENAW)SS.

LAWRENCE KESTENBAUM, Clerk/Register

BY: 

Brenden McArthur, Deputy Clerk



Res. No. 26-012

HEALTH OFFICER'S REPORT

February 18th, 2026

Region 7 Perinatal Quality Collaborative was established in 2019 to ensure that mothers and babies are thriving across Clinton, Ingham and Eaton counties. Recent initiatives for Clinton County include an updated online WIC referral form and resources, childbirth and breastfeeding classes and labor and delivery tours. We are also launching a Safe Sleep Campaign in Clinton County and will be connecting with First Responders that identify unsafe sleep practices or conditions and offer safe sleep education resource at the point of concern. Families will receive a Pack 'n Play referral card.

Safe Sleep Pack & Play provided by:



A Safe Sleep environment includes:

1. Put baby to sleep on back to protect baby's airway and ensure access to fresh air.
2. Put baby in their own sleep space like a crib, bassinet or pack and play
3. Remove clutter like stuffed animals, pillows and blankets.
4. Breastfeed baby, if you can.
5. Share a room, not a bed.
6. Avoid overheating.
7. Do not use seats, swings or couch for routine sleep.
8. Teach every caregiver about safe sleep.
9. Plan ahead when tired to keep baby safe.

Practice safe sleep daytime, nighttime, and every time until baby's first birthday.

Women, Infants & Children (WIC) is a health and nutrition program that positively impacts pregnancy outcomes and child development. It supports healthy mothers, infants, and children by offering nutrition education and supplemental food to pregnant and postpartum women, infants, and children up to age 5.

Being consistent with Safe Sleep can save lives.

Scan below to discover Mid-Michigan District Health Department's Community Health Services



Clinton County
989-224-2195

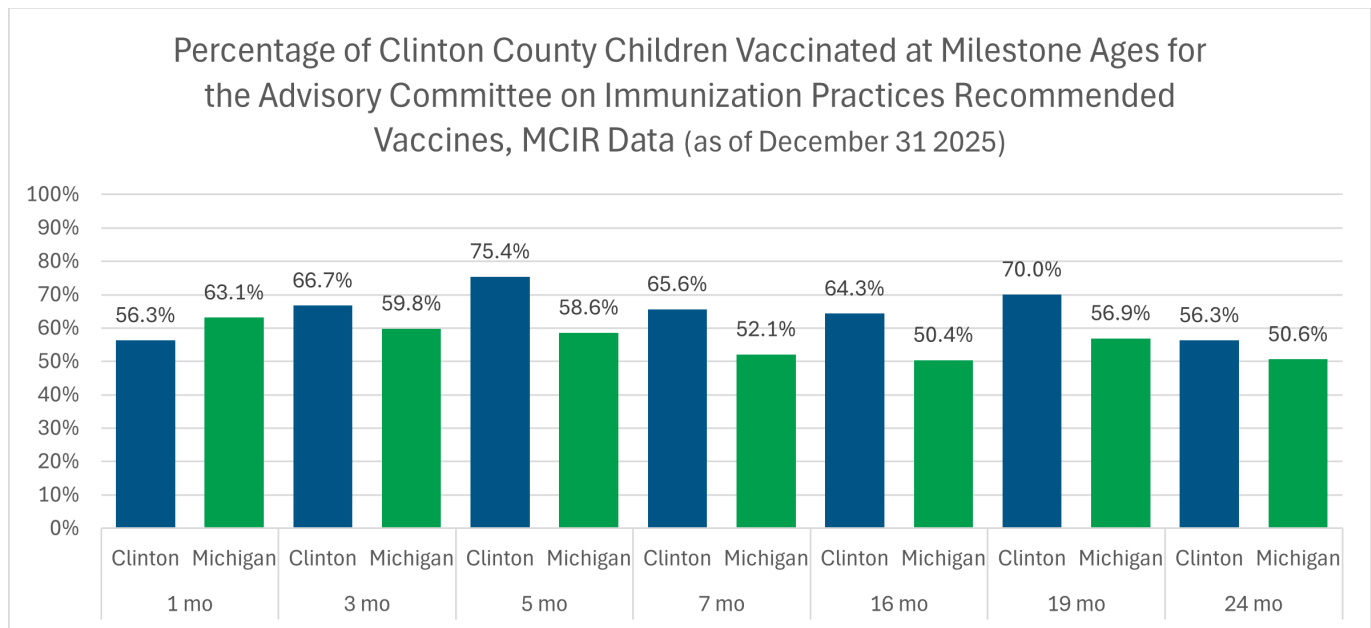
Montcalm County
989-831-5237

Gratiot County
989-875-3681

Radon Testing.

During radon awareness month in January, the Health Department provided 70 radon test kits to residents. Radon is a naturally occurring radioactive gas found in soils throughout Michigan, and it can seep into homes through cracks and openings in the foundation. Because radon is colorless, odorless, and tasteless, testing is the only way to know if levels are elevated. The Michigan Department of Environment, Great Lakes, and Energy (EGLE) reports that many homes across the state have radon levels above the EPA action level of 4 picocuries per liter (pCi/L), including areas in which no previous problems were documented. Long-term exposure to high radon levels is the second leading cause of lung cancer in the United States, making testing and mitigation important steps for protecting your family's health.

Childhood Immunization Rates.



Vaccine recommendations from the American Academy of Pediatrics are designed to help children in the United States resist serious illness so they can stay healthy and our communities stay healthy



Investment Report

February 05, 2026

Clinton County Post Retirement

Presented by:

Alan Kort, CFA®

Senior Investment Advisor

(616) 653-5024

Table of Contents

Allocation Summary: Asset Category

Performance Summary: Asset Class

Reconciliation Summary

Disclosures

Your Fifth Third Bank Team

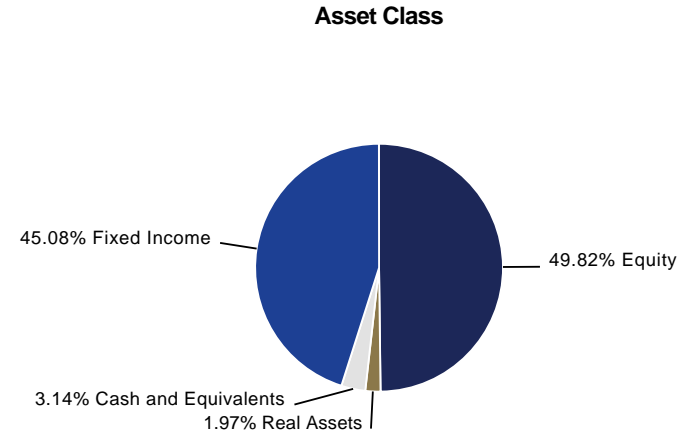
	Officer	Phone	Email
Portfolio Manager	Alan Kort, CFA®	(616) 653-5024	alan.kort@53.com

Allocation Summary: Asset Category

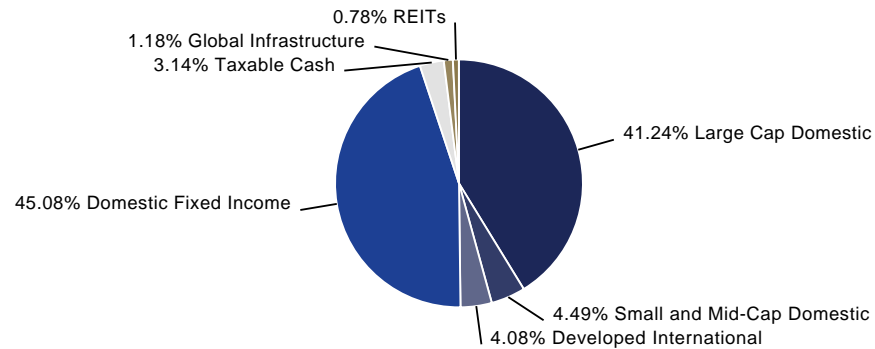
As of 12/31/2025

Account Name: CLINTON CTY POST RET CONSOLIDATED Account Number: AGG16CCPR

	% Holdings	Market Value	Estimated Annual Income	Current Yield
Marketable Holdings				
Traditional Asset Classes:	100.00%	\$19,979,513.19	\$530,936.56	2.66%
Cash and Equivalents	3.14%	\$626,704.06	\$23,012.25	3.67%
Fixed Income	45.08%	\$9,006,122.88	\$362,945.69	4.03%
Equity	49.82%	\$9,953,921.01	\$132,651.79	1.33%
Real Assets	1.97%	\$392,765.24	\$12,326.83	3.14%
Total Marketable Holdings	100.00%	\$19,979,513.19	\$530,936.56	2.66%
Total Holdings		\$19,979,513.19	\$530,936.56	2.66%



Traditional Asset Categories



Performance Summary: Asset Class

As of 12/31/2025

Account Name: CLINTON CTY POST RET CONSOLIDATED

Account Number: AGG16CCPR

Category Benchmark	% of Holdings	Market Value	1 Mo	3 Mo	YTD	1 Yr	3 Yr	5 Yr	10 Yr	ITD 05/01/2002
Marketable Holdings										
Traditional Asset Classes:	100.0%									
Cash and Equivalents	3.2%	\$628,645.46	0.3%	1.0%	4.2%	4.2%	4.9%	3.2%	2.1%	1.7%
<i>ICE BofAML 91 Day Treasury</i>			0.4%	1.0%	4.2%	4.2%	4.8%	3.2%	2.2%	1.7%
Fixed Income	45.1%	\$9,012,722.58	0.1%	1.1%	6.9%	6.9%	5.2%	0.6%	2.2%	3.4%
<i>Bloomberg US Interm Gov/Credit</i>			0.1%	1.2%	7.0%	7.0%	5.1%	1.0%	2.3%	3.4%
Equity	49.8%	\$9,953,921.01	0.0%	1.8%	13.5%	13.5%	18.8%	11.3%	12.6%	8.9%
<i>MSCI ACWI - Net</i>			1.1%	3.3%	22.3%	22.3%	20.7%	11.2%	11.7%	8.5%
Real Assets	2.0%	\$392,765.24	-1.7%	-0.1%	11.8%	11.8%				
<i>Real Asset Benchmark 50% US REIT 50% Global Infrs</i>			-1.5%	0.4%	12.5%	12.5%	11.6%	8.9%	6.6%	
Total Marketable Holdings (Net of Fees)	100.0%	\$19,988,054.29	-0.0%	1.4%	9.6%	9.6%	11.7%	5.7%	7.2%	6.2%
<i>CLINTON COUNTY POST RETIREMENT</i>			0.6%	2.3%	14.7%	14.7%	13.0%	6.5%	7.4%	6.3%

Total Holdings	\$19,988,054.29
-----------------------	------------------------

Reconciliation Summary

From: 01/01/2025 To: 12/31/2025

Account Name: CLINTON CTY POST RET CONSOLIDATED **Account Number:** AGG16CCPR

Total Holdings on 01/01/2025		\$18,743,877.69
Beginning Marketable Holdings on 01/01/2025		\$18,736,312.83
Beginning Accrued Income		\$7,564.86
Beginning Value		\$18,743,877.69
	Contributions	
	Cash Contributions	\$331,329.51
	Asset Receipts	\$171,965.30
	Other Contributions	\$0.00
	Total Contributions	\$503,294.81
	Withdrawals	
	Cash Withdrawals	(\$862,589.64)
	Asset Delivery	(\$171,965.30)
	Fees	(\$64,062.43)
	Total Withdrawals	(\$1,098,617.37)
	Intra-Account Reallocations	
	Cash From	\$2,173,773.69
	Cash To	(\$2,173,521.54)
	Income Earned	
	Interest Collected	\$380,463.58
	Dividends Collected	\$164,058.79
	Other Income	\$0.00
	Net Accrued Income	\$976.24
	Total Income Earned	\$545,498.61
	Net Change	\$1,293,748.40
Ending Marketable Holdings on 12/31/2025		\$19,979,513.19
Ending Accrued Income		\$8,541.10
Ending Value		\$19,988,054.29
Total Holdings on 12/31/2025		\$19,988,054.29
	Total Earnings	\$1,839,247.01

Disclosures

Economic Indicators: The **U.S. GDP** (Gross Domestic Product) is the total market value of all final goods and services produced in the United States in a given year, equal to total consumer, investment and government spending, plus the value of exports, minus the value of imports. The **Consumer Price Index** (CPI) is an inflationary indicator that measures the change in the cost of a fixed basket of products and services, including housing, electricity, food, and transportation. The CPI is published monthly and is also called cost-of-living index. **Gold Index** is the U.S. dollar per Troy ounce as reported from FactSet. **The U.S. Industrial Production Index** is a monthly Federal Reserve Board statistic for the total output of U.S. mines, utilities and factories. Reference year is 2012 at 100. The **U.S. ISM Manufacturing Purchasing Managers' Index (PMI)** is a monthly index released by the Institute of Supply Management which tracks the amount of manufacturing activity that occurred in previous month. If the index has a value below 50, it tends to indicate a contraction in the economy. A value substantially above 50 indicates economic growth. Value is between 0 and 100. The **Unemployment Rate** tracks the number of unemployed persons as a percentage of the labor force (the total number of employed plus unemployed). The **NFIB Small Business Optimism Index** is an index derived from 10 components using monthly surveys from a large sample of respondents drawn from the membership of the National Federation of Independent Business. **West Texas Intermediate (WTI) Crude** is a grade of crude oil used as a benchmark for oil pricing.

Equity Indices: The **Standard & Poor's (S&P) 500 Stock Index** is a composite of 500 of the largest companies in the U.S. and it is often used as a measure of the overall U.S. stock market. The **S&P 100 Index**, a sub-set of the S&P 500, measures the performance of large-cap companies in the U.S. The Index comprises 100 major, blue-chip companies across multiple industry groups. Individual stock options are listed for each index constituent. The **S&P MidCap 400** provides investors with a benchmark for mid-sized companies. The index is designed to measure the performance of 400 mid-sized companies, reflecting the distinctive risk and return characteristics of this market segment. The **Dow Jones Industrial Average** is a price-weighted average of 30 blue-chip stocks that are generally the leaders in their industry. It has been a widely followed indicator of the stock market since Oct. 1, 1928. The **Dow Jones U.S. Dividend 100 Index** measures the performance of high-dividend-yielding stocks in the U.S. with a record of consistently paying dividends, selected for fundamental strength relative to their peers, based on financial ratios. The **NASDAQ-100** Stock Index is a modified capitalization-weighted index of the 100 largest and most active non-financial domestic and international issues listed on the Nasdaq. No security can have more than a 24% weighting. The **Russell 3000 Index** is a U.S. stock market benchmark that measures the performance of the 3,000 highest rated companies by market capitalization. The **Russell 1000 Index** is a U.S. Stock Market benchmark that measures the performance of the top 1,000 stocks in the Russell 3000 Index, which represents over 90% of the total market capitalization. The **Russell 2000 Index** measures the performance of the bottom 2,000 stocks in the Russell 3000 Index. The **Russell 2500 Index** measures the performance of the smallest 2,500 companies in the Russell 3000 Index. This index is constructed to give a comprehensive and unbiased barometer for the small and mid-cap segment of the U.S. equity universe. The **Morgan Stanley Capital International Index (MSCI) EAFE Index** captures large-cap and mid-cap representation across 21 Developed Markets countries around the world, excluding the U.S. and Canada. The index covers approximately 85% of the free float-adjusted market capitalization in each country.

The **MSCI Emerging Markets Index** captures large-cap and mid-cap representation across 24 Emerging Markets (EM) countries. The index covers approximately 85% of the free float-adjusted market capitalization in each country. The **MSCI All Country World Index (ACWI)** captures large-cap and mid-cap representation across 23 Developed Markets (DM) and 24 Emerging Markets (EM) countries. The index covers approximately 85% of the global investable equity opportunity set.

Fixed Income Indices: The **Bloomberg U.S. Intermediate Government/Credit Bond Index** is composed of all investment-grade, U.S. dollar-denominated, fixed-rate Treasuries, government-related and corporate securities. Total return comprises price appreciation/depreciation and income as a percentage of the original investment. The **Bloomberg U.S. Aggregate Bond Index** is a broad-based, U.S. dollar-denominated, fixed rate taxable bond market benchmark including assets such as treasuries, gov/corp bonds, asset-backed securities, collateralized and non-collateralized mortgage-backed securities. The **Bloomberg U.S. Corporate High Yield Index** measures the U.S. dollar-denominated, high-yield, fixed-rate corporate bond market. Securities are classified as high yield if the middle rating of Moody's, Fitch and S&P is Ba1/BB+/BB+ or below. The index excludes emerging markets debt. The **Bloomberg Global Aggregate Index** is a flagship measure of global investment grade debt from 24 local currency markets. It is comprised of the U.S. Aggregate, Pan-Europe Aggregate, Asian-Pacific Aggregate and Canadian Aggregate Indices. The **Bloomberg Global Aggregate ex U.S.** is a measure of investment-grade debt from 25 local currency markets excluding the U.S., including both developed and emerging market issuers. The **Bloomberg U.S. Municipal Bond Index** covers the U.S. dollar-denominated long-term tax-exempt bond market. The **Bloomberg U.S. Asset-Backed Securities Index** is a U.S. dollar denominated, fixed-rate taxable bond market benchmark only including asset-backed securities. The **Bloomberg Quality Intermediate Municipal Bond Index** tracks the performance of municipal bonds issued after Dec. 31, 1990, with remaining maturities between two and 12 years and at least \$5 million in principal outstanding. The **JPMorgan Emerging Markets Bond Index (EMBI)** Global tracks total returns for traded external debt instruments in the emerging markets, including U.S. dollar-denominated Brady bonds, loans, and Eurobonds with an outstanding face value of at least \$500 million. The **Bloomberg U.S. TIPS** benchmark measures the performance of the U.S. Treasury Inflation Protected Securities market. **Barclays Capital U.S. Intermediate Government/Credit Bond Index** measures the performance of U.S. Dollar denominated U.S. Treasuries, government-related and investment grade U.S. corporate securities that have a remaining maturity of greater than one year and less than 10 years.

Cash & Equivalent Indices: The **ICE Bank of America (BOFA) Merrill Lynch 91-Day Treasury Bill Index** is an unmanaged index consisting of U.S. Treasury Bills maturing in 90 days. The **U.S. Dollar Index** indicates the general international value of the U.S. dollar by averaging the exchange rates between the U.S. dollar and six major world currencies. The **FINEX** computes this by using the rates supplied by some 500 banks. The **iMoneyNet Government Institutional Money Market Funds** includes all national institutional money market funds. The index excludes restricted funds and funds with assets less than \$100 million. Only domestic share classes and master classes funds are reported to iMoneyNet. The **iMoneyNet Tax-Free National Institutional Money Market Funds** includes all national institutional and municipal money market funds. Portfolio holdings of tax-free funds include rated and unrated demand notes, rated and unrated general market notes, commercial paper, put bonds – six months or less, put bonds – over six months, Alternative Minimum Tax (AMT) paper and other tax-free holdings. A tax-free money market fund is tax-free at the federal level for the majority of investors. For a fund to call itself “tax-free,” no more than 20% of its assets may be invested in paper that is subject to AMT. The **U.S. Treasury Yield** is the pre-tax yield to maturity on Generic United States on-the-run government bill/note/bond indices at different maturities. The 10-yr and two-year maturities are widely quoted and the spread between the two is often referred to as the “yield curve.”

Real Asset Indices: The **Real Asset Benchmark** is a proprietary custom-blended real assets benchmark consisting of 100% Consumer Price Index (CPI) Oct. 1, 2021 and forward, 100% Standard & Poor’s U.S. REIT Composite Index Jan. 1, 2021 – Sept. 30, 2021 and a 50/50 blend of the S&P U.S. REIT and the S&P Global Infrastructure NR prior to Jan. 1, 2021 (see detailed descriptions above in Real Asset Indices). The **Consumer Price Index (CPI)** is a measure of the average change over time in the prices paid by urban consumers for a market basket of consumer goods and services. **S&P U.S. Real Estate Investment Trust (REIT) Composite Index** tracks the market performance of the U.S. real estate investment trusts, known as REITs. The REIT Composite consists of approximately 100 REITs with at least \$100 million in market capitalization, chosen for their liquidity and represents a balance of property types and geographic locations. Mortgage REITs are not eligible for inclusion. **S&P Global Infrastructure Index** tracks 75 companies from around the world chosen to represent the listed infrastructure industry and includes three distinct infrastructure clusters: energy, transportation and utilities. **The Bloomberg Commodity** benchmark is a commodity price index that tracks prices of future contracts on physical commodities. The **Alerian MLP Infrastructure Index** measures performance of energy infrastructure Master Limited Partnerships. It is capped, float-adjusted, and market capitalization-weighted, focusing on companies that mainly operate in midstream activities in the energy sector. The **Wilshire US REIT Index** tracks performance of publicly traded Real Estate Investment Trusts on the U.S. stock market.

Alternative Indices: The **Thompson Reuters/Core Commodity – CRB Index** is based on Exchange Traded Futures. The Index represents 19 commodities, grouped by liquidity into four groups. Petroleum products capped at 33%, other three groups equal-weighted. The **S&P GSCI** is widely recognized as the leading measure of general commodity price movements and inflation in the world economy. The **S&P GSCI Gold Total Return Index**, a sub-index of the S&P GSCI, provides investors with a reliable and publicly available benchmark tracking the COMEX gold future. The index is designed to be tradable, readily accessible to market participants and cost efficient to implement. The **HFRX Global Hedge Fund Index** is designed to be representative of the overall composition of the hedge fund universe. It is comprised of all eligible hedge fund strategies; including but not limited to convertible arbitrage, distressed securities, equity hedge, equity market neutral, event driven, macro, merger arbitrage, and relative value arbitrage. The strategies are asset-weighted based on the distribution of assets in the hedge fund industry.

Total Fund Benchmarks: The **Reference Benchmark** is a proprietary benchmark consisting of the S&P 500 and the Bloomberg U.S. Intermediate Government/Credit Bond index weighted based on the investment objective of the account. The **Strategic Benchmark** is a proprietary benchmark consisting of the representative asset class benchmarks weighted based on the policy allocation of the account.

Risk Statistics Benchmarks: The **Comparison Benchmark** is selected to represent comparative risk statistics for an index that closely aligns with the investment strategy employed in the portfolio, in most cases it will be the total fund benchmark for the portfolio. The **Risk-Free Benchmark** is not shown on the reports but is used in the calculation of some of the statistics. The benchmark used is the **ICE Bank of America (BOFA) Merrill Lynch 91-Day Treasury Bill Index**.

Sources: News, economic and market information compiled from various sources including Bloomberg, FactSet, Wall Street Journal, Briefing.com, Economy.com, and Investor’s Business Daily. Opinions are provided by the Investment Management Group of Fifth Third Bank, National Association, and may not actually come to pass. This information is current as of the date of this commentary and is subject to change at any time, based on market conditions and other events. The information presented in this material is general in nature and does not constitute the rendering of investment advice or a specific recommendation on investment activities and trading. Prior to making any investment decision, you should assess or seek advice from a professional regarding whether any particular transaction is relevant or appropriate to your individual circumstances.

Investments in foreign markets entail special risks such as currency, political, economic and market risks. Small company investing involves specific risks not necessarily encountered in large company investing, such as increased volatility. Mid-cap stocks generally have higher risk characteristics than large-cap stocks.

All bonds are subject to availability and yields are subject to change. Market value will fluctuate. Bond values will decline as interest rates rise. The bond's income may be subject to certain state and local taxes depending upon your tax status and/or the federal alternative minimum tax.

Indices defined above are reflective of standard benchmarks used for performance reporting or market overviews. If you have requested that we use different or custom benchmark for your performance measurements, that benchmark will not be defined above. Contact your portfolio manager for information regarding the benchmark. Net of fee performance will include only fees paid or rebated directly. Fees paid by invoice or charged to another account are not included in this calculation. Performance since Jan. 1, 2017, is calculated using daily prices and reported monthly. Prior to this time, performance was calculated based on month-end pricing. Changes in asset categorization, opening and closing of accounts and transferring of assets between accounts could impact reporting of performance results. Index performance shown within this presentation is not representative of a managed account. You cannot invest directly in an index. Indices are unmanaged and do not incur investment management fees. Past performance is no guarantee of future results.

Effective Jan. 1, 2020, Fifth Third Dividend Growth and Fifth Third Dividend Growth PI are managed by Franklin Street Advisors, Inc., and are renamed Franklin Street Dividend Growth and Franklin Street Premium Income, respectively. Prior to Jan. 1, 2020, these strategies were managed by Fifth Third's Investment Management Group from Dec 1, 2018 – Dec. 31, 2019, and ClearArc Capital, Inc. from inception to Nov. 30, 2018. There is a fee of 30 basis points associated with these strategies in addition to Fifth Third investment management fees (excluding ERISA and IRA accounts).

Franklin Street ESG is managed by Franklin Street Advisors, Inc. There is a fee of 30 basis points associated with these strategies in addition to Fifth Third investment management fees (excluding ERISA and IRA accounts).

Equity and S&P 500 Characteristics are provided by FactSet. Credit quality and maturity schedule information for fixed income funds is provided by Morningstar and FactSet.

© 2026 Morningstar, Inc. All Rights Reserved. The information contained herein: (1) is proprietary to Morningstar and/or its content providers; (2) may not be copied or distributed; and (3) is not warranted to be accurate, complete or timely. Neither Morningstar nor its content providers are responsible for any damages or losses arising from any use of this information. Past performance is no guarantee of future results.

Fifth Third Bank may rely on outside sources for various components of valuation and indexing information. Fifth Third Bank has exercised reasonable professional care in the preparation of this performance report. However, we cannot guarantee the accuracy/completeness of all information, and we are not responsible for any clerical, computational or other errors contained within the report.

Where applicable, the market values on performance reports include accruals. Accruals are not included in the market value of other reports. Positions are reported as of trade-date (not settle date).

Market values shown reflect the most recent price information or estimate available. The method and frequency of pricing assets varies depending on the type of asset; therefore, the price shown on your statement for certain assets may not be a current value as of the statement date. Cost basis shown is an estimate only based on current information available to Fifth Third. Any adjustments needed will be made for official tax reporting records as basis information is received by Fifth Third from investment managers.

Asset Allocation does not assure or guarantee better performance and cannot eliminate the risk of investment loss. Alternative Strategies and hedging are subject to a higher degree of market risk than a well-diversified portfolio. An investor should understand the costs, cash flows and risks inherent in a strategy prior to making any investment decision. There are no guarantees that any strategy presented will perform as intended.

*Tactical Asset Allocation Recommendations: Allocation recommendations are subject to change and may be updated at any point in time.

Information in the enclosed materials may include historical investment performance for accounts in which Fifth Third Bank may have full investment authority, shared investment responsibility, or may not have any investment responsibility at all. The governing document for the account delineates the role and investment responsibility that Fifth Third Bank has for these assets and should be reviewed if there are any questions.

The opinions expressed herein are those of Fifth Third Bank and may not actually come to pass. This information is current as of the date of this presentation and is subject to change at any time, based on market and other conditions. This information is intended for educational purposes only and does not constitute the rendering of investment advice or specific recommendations on investment activities and trading. The mention of a specific security within this presentation is not intended as a solicitation to buy or sell the specific security.

Representatives of Fifth Third Bank do not offer or provide legal, accounting or tax advice. Please consult with your attorney, accountant and/or tax professional as needed.

Fifth Third Private Bank is a division of Fifth Third Bank, National Association, which is an indirect subsidiary of Fifth Third Bancorp.

If your account was referred by an employee of Fifth Third Securities, an affiliated entity, Fifth Third Bank pays a portion of the account fee to Fifth Third Securities, who in turn pays a portion of that account fee to the referring Investment Executive, who is serving as the relationship manager. In certain instances, the Investment Executive may earn additional compensation when referring a client to Private Client Services ("PCS") within Fifth Third.

PCS Advisor and Private Client Services can be interchanged with the Private Bank as some Private Bank accounts can be referred by an Investment Executive and they serve as a relationship manager for those accounts as well.

PCS Investment Management and Wealth Management Services are offered through or made available by Fifth Third Bancorp's indirect subsidiary, Fifth Third Bank, National Association.

Sample IPS and Performance Report included in "Managing Money the Fifth Third Way" are provided for illustration purposes only and are representative of Fifth Third clients looking for broad diversification and moderate risk and does not constitute the rendering of investment advice or a specific recommendation on investment activities and trading. Recommendations and their results may vary with each client based on their current financial picture and goals. There are no guarantees that any investment strategy described in this publication will result in a profit. Investment results cannot be predicted or forecasted and will vary depending on market conditions. Indexes are unmanaged and do not incur investment management fees. You cannot invest directly in an index. Past performance is no guarantee of future results.

Investments and investment services are offered through or made available by one or more of Fifth Third Bancorp's indirect subsidiaries, including Fifth Third Bank, National Association. Investments and Investment Services:

Are Not FDIC Insured	Offer No Bank Guarantee	May Lose Value
Are Not Insured By Any Federal Government Agency		Are Not A Deposit

Insurance products made available through Fifth Third Insurance Agency, Inc.

© 2026 Fifth Third Bank, National Association.



FARMLAND AND OPEN SPACE PRESERVATION PROGRAM

Application for Farmland Development Rights Agreement

Part 361 of the Natural Resources and Environmental Protection Act, 1994 Act 451 as amended, more commonly known as PA 116. Please print or type. Attach additional sheets as needed. Refer to the Eligibility and Instructions document before filling out this form.

OFFICIAL USE ONLY

Local Governing Body:
Date Received: 1-6-2024
Application No: 2026-1
State:
Date Received:
Application No:
Approved: Rejected

ALL APPLICATIONS MUST BE APPROVED BY LOCAL GOVERNING BODY ON OR BEFORE NOVEMBER 1 TO BE EFFECTIVE FOR THE CURRENT TAX YEAR

I. Personal Information:

1. Name(s) of Applicant: Chant Gary L
Last First Initial

(If more than two see #15) BAILEY KEVIN L
Last First Initial

2. Mailing Address: 2517 W Jason Rd DeWitt MI 48820
Street City State Zip Code

3. Phone Number: (Area Code) (517) 897-5483 (Gary)

4. Alternative Telephone Number (cell, work, etc.): (Area Code) (517) 712-5498

5. E-mail address: tchant66@aol.com

II. Property Location (Can be taken from the Deed/Land Contract)

6. County: Clinton 7. Township, City or Village: Olive

8. Section No. 17 Town No. 6N Range No. 2W

Parcel # (Tax ID): 110-017-100-045-60

III. Legal Information:

9. Attach a clear copy of the deed, land contract or memorandum of land contract. (See #14)

10. Attach a clear copy of the most recent tax assessment or tax bill with complete tax description of property.

11. Is there a tax lien against the land described above? [] Yes [X] No

If "Yes", please explain circumstances:

12. Does the applicant own the mineral rights? [X] Yes [] No

If owned by the applicant, are the mineral rights leased? [] Yes [X] No

Indicate who owns or is leasing rights if other than the applicant:

Name the types of mineral(s) involved:

13. Is land cited in the application subject to a lease agreement (other than for mineral rights) permitting a use for something other than agricultural purposes: [] Yes [X] No If "Yes", indicate to whom, for what purpose and the number of acres involved:

14. Is land being purchased under land contract [] Yes [X] No: If "Yes", indicate vendor(seller):

Name:

Address:


Street City State Zip Code

14a. Part 361 of the Natural Resources and Environmental Protection Act, 1994 Act 451 as amended, states that the vendor (seller) must agree to allow the land cited in the application to be enrolled in the program. Please have the land contract sellers sign below. (All sellers must sign).

Land Contract Vendor(s): I, the undersigned, understand and agree to permit the land cited in this application into the Farmland and Open Space Preservation Program.

Date

Signature of Land Contract Vendor(s) (Seller)

Grantor	Grantee	Sale Price	Sale Date	Inst. Type	Terms of Sale	Liber & Page	Verified By	Prcnt. Trans.			
Property Address		Class: AGRICULTURAL-VACA		Zoning: A2	Building Permit(s)		Date	Number	Status		
V/L W JASON RD		School: ST JOHNS PUBLIC SCHOOLS									
Owner's Name/Address		P.R.E. 100% 12/19/2014 Qual. Ag.									
BAILEY, KEVIN & CHANT, GARY 2517 W JASON RD DEWITT MI 48820		MAP #: 17		2026 Est TCV 789,894							
Tax Description		X Improved	Vacant	Land Value Estimates for Land Table 002.AGRICULTURAL							
COM AT THE N 1/4 COR SEC 17, T6N R2W, TH E 351.20 FT, TH S 250.00 FT, TH E 200 FT, TH N 250.00 FTTH E 238.80 FT, TH S 165.00 FT, TH E 132.00 FT, TH N 165.00 FT, TH E 399.84 FT, TH S 988.80 FT, TH E 918.11 FT TH S 544.01 FT, TH W 141.18 FT, TH S 469.49 FT, TH E 148.50 FT, TH S 305.00 FT TH W 924.90 FT, TH S 330.00 FT, TH W 1320.77 FT, TH N 2642.36 FT TO THE POB. NEW 2015 FROM 110-017-100-045-00 & PART OF 110-017-100-030-51.		Public Improvements		* Factors *					Value		
		X	Dirt Road	AGRICULTUR WOODS	9.65 Acres	7300	100		70,445		
		X	Gravel Road	AGRICULTUR TILLABLE	92.26 Acres	7300	100		673,498		
		X	Paved Road	AGRICULTUR RD ROW	0.75 Acres	0	100		0		
		X	Storm Sewer	AGRICULTUR HOMESITE	1.00 Acres	40800	100		40,800		
		X	Sidewalk	AGRICULTUR WASTE	1.15 Acres	3650	100		4,198		
		X	Water	104.81 Total Acres Total Est. Land Value =					788,941		
		X	Sewer								
		X	Electric								
		X	Gas								
		X	Curb								
		X	Street Lights								
		X	Standard Utilities								
		X	Underground Utils.								
Comments/Influences		Topography of Site									
		X	Level								
			Rolling								
			Low								
			High								
			Landscaped								
			Swamp								
			Wooded								
			Pond								
			Waterfront								
			Ravine								
			Wetland								
			Flood Plain								
		Who	When	What	Year	Land Value	Building Value	Assessed Value	Board of Review	Tribunal/Other	Taxable Value
The Equalizer. Copyright (c) 1999 - 2009. Licensed To: Township of Olive, County of Clinton, Michigan		PAL	09/16/2021	DATA VERIF	2026	394,500	400	394,900			114,360C
		PAL	04/15/2020	DATA VERIF	2025	356,400	400	356,800			111,354C
		GW	12/19/2014	Inspected	2024	274,400	400	274,800			108,006C
					2023	273,500	400	273,900			102,863C

*** Information herein deemed reliable but not guaranteed***

RESERVED FOR LOCAL GOVERNMENT USE: COMPLETED BY CLERK

I. Application Processing

Date application received: 1-16-2024 (Note: Local governing body has 45 days to take action)

Date action taken by local governing body jurisdiction: Clinton

County Township City Village

Included documentation: Resolution Meeting Minutes

This application is Approved Rejected

*Clerk must complete verification on the next page.

Date of approval or rejection by local governing body: February 24, 2025
(if rejected, please attach statement from local governing body indicating reason(s) for rejection)

Property appraisal: \$ _____

Assessor certifies this is the current fair market value of the property.

Parcel # (Tax ID): _____

Clerk's name: Debra A. Sutherland

Clerk's phone: 989, 224-5140 Clerk's email: clerk@clinton-county.org

Debra A. Sutherland

Printed Name of Clerk

Signature of Clerk

Date

Assessor's name: _____

Assessor's phone: (____) _____ Assessor's email: _____

Printed Name of Assessor

Signature of Assessor

Date

LOCAL GOVERNING BODY VERIFICATION IS FOUND ON PAGE 10

017-100-045-2 24.81 ac

Parent Parcel Information

PA116 CHANT

Parcel Number: 110-017-100-045-60							
Owner's Name: CHANT							
Total Acres	Total AV	Total TX	TCV of Hse, O.B., Imp.	TCV of Land	% to House	% to Land	
104.810	207,100	87,747	0	547,200	0.00%	100.00%	
Assessed Value Allocation			Taxable Value Allocation				
AV to House	0	TX to House	0				
AV to Land	207,100	TX to Land	87,747				
Total Assessed:	207,100	Total Taxable	87,747				

Children Parcel Information

Child #1							
Parcel Number:		True Cash Value					
Total Acres #1	% of Ttl Land	AV of Land	TV of Land	of Buildings	AV of HSE	TX of HSE	
80.000	76.33%	158,100	66,976	0	0	0	0.00%
Total Assessed	158,100						
Total Taxable	66,976						
Child #2							
Parcel Number:		True Cash Value					
Total Acres #2	% of Ttl Land	AV of Land	TV of Land	of Buildings	AV of Hse	TX of Hse	
24.810	23.67%	49,000	20,771	0	0	0	0.00%
Total Assessed	49,000						
Total Taxable	20,771						

Comparison

Total AV of Parent	207,100
Total AV of Children	207,100
Total TV of Parent	87,747
Total TV of Children	87,747

July 31, 2025



OLIVE TOWNSHIP
1400 W PRATT RD.
DEWITT, MI 48820

RE: PA116 Agreements 19-27768C-12312030
 19-27768D-12312030

To Whom it May Concern,

I have received a request to calculate the taxable values for parcel 110-017-100-045-60 for 24.81 acres that is not enrolled in the PA 116 program.

The following is a list of the Taxable Values for the 24.81 acres site portion of parcel number 110-017-100-045-60 from the year 2014 thru 2024.

YEAR	TV	CPI
2014	20,771	1.016
2015	21,103	1.016
2016	21,441	1.003
2017	21,505	1.009
2018	21,699	1.021
2019	22,155	1.024
2020	22,686	1.019
2021	23,117	1.014
2022	23,441	1.033
2023	24,214	1.05
2024	25,425	1.05

If you have any questions, please call or email me.

Regards,
Peggy

Peggy A Lidgard
Olive Township Assessor
PO Box 491
DeWitt, MI 48820
517-669-1205
lidgardassessing@comcast.net

15. If the applicant is one of the following, please check the appropriate box and complete the following information (if the applicant is not one of the following – please leave blank):

- 2 or more persons having a joint or common interest in the land
- Corporation
- Estate
- Limited Liability Company
- Trust
- Partnership Association

If applicable, list the following: Individual Names if more than 2 Persons; or President, Vice President, Secretary, Treasurer; or Trustee(s); or Members; or Partners; or Estate Representative(s):

Name: Gary Chant Title: member

Name: Ker Barby Title: member

Name: _____ Title: _____

Name: _____ Title: _____

(Additional names may be attached on a separate sheet.)

IV. Land Eligibility Qualifications: Check one and fill out correct section(s)

This application is for:

- a. 40 acres or more ▶ complete only Section 16 (a thru g);
- b. 5 acres or more but less than 40 acres ▶ complete only Sections 16 and 17; or
- c. a specialty farm ▶ complete only Sections 16 and 18.

16. a. Type of agricultural enterprise (e.g. livestock, cash crops, fruit, etc):

cash crop

b. Total number of acres on this farm: 24.81

c. Total number of acres being applied for (if different than above): _____

d. Acreage in cultivation: 24.81

e. Acreage in cleared, fenced, improved pasture, or harvested grassland: 0

f. All other acres (swamp, woods, etc.): 0

g. Indicate any structures on the property: (If more than one building, indicate the number of buildings): 0

No. of Buildings _____ Residence: _____ Barn: _____ Tool Shed: _____

Silo: _____ Grain Storage Facility: _____ Grain Drying Facility: _____

Poultry House: _____ Milking Parlor: _____ Milk House: _____

Other: (Indicate) _____

17. To qualify as agricultural land of 5 acres or more but less than 40 acres, the land must produce a minimum average gross annual income of \$200.00 per acre from the sale of agricultural products.

Please provide the average gross annual income per acre of cleared and tillable land during 2 of the last 3 years immediately preceding this application **from the sale of agricultural products (not from rental income):**

\$ 11,164.50 / 24.81 = \$ 450 (per acre)
total income total acres of tillable land

18. To qualify as a specialty farm, the land must be designated by MDARD, be 15 acres or more in size, and produce a gross annual income from an agricultural use of \$2,000.00 or more. If a specialty farm, indicate average gross annual income during 2 of the last 3 years immediately preceding application from the sale of agricultural products: \$ _____

Please note: specialty farm designation may require an on-the-farm site visit by an MDARD staff person.

19. What is the number of years you wish the agreement to run? (Minimum 10 years, maximum 90 years); 30

V. Signature(s):

20. The undersigned certifies that this application identifies the owner of record, legal description of property, and all liens, covenants, and other encumbrances affecting the title to the land.

Gary Chant
(Signature of Applicant)
[Redacted]
(Co-owner, If Applicable)
[Redacted]
(Date)

Bailey Chant Farms LLC
(Corporate Name, If Applicable)
[Redacted]
(Signature of Corporate Officer)
Gary Chant Member
(Title)

ALL APPLICATIONS MUST BE APPROVED BY LOCAL GOVERNING BODY ON OR BEFORE NOVEMBER 1 IN ORDER TO BE EFFECTIVE FOR THE CURRENT TAX YEAR.

RESERVED FOR LOCAL GOVERNMENT USE: CLERK PLEASE COMPLETE SECTIONS I & II

I. Date Application Received: 1-6-2024 (Note: Local Governing Body has 45 days to take action)

Action by Local Governing Body: Jurisdiction: Clinton
 County Township City Village

This application is approved, rejected Date of approval or rejection: _____

(If rejected, please attach statement from Local Governing Body indicating reason(s) for rejection.)

Clerk's Signature: [Redacted]

Property Appraisal: \$ See Attached is the current fair market value of the real property in this application.

Parcel Number (Tax ID): _____

II. Please verify the following:

____ Upon filing an application, clerk issues receipt to the landowner indicating date received.

____ Clerk notifies reviewing agencies by forwarding a copy of the application and attachments.

____ If rejected, applicant is notified in writing within 10 days stating reason for rejection and the original application, attachments, etc. are returned to the applicant. Applicant then has 30 days to appeal to State Agency.

____ If approved, applicant is notified and the original application, all supportive materials/attachments, and letters of review/comment from reviewing agencies (if provided) are sent to:

MDARD-Farmland and Open Space Preservation Program, P.O. Box 30449, Lansing, MI 48909

***Please do not send multiple copies of applications and/or send additional attachments in separate mailings without first contacting the Farmland Preservation office.**

<p>Please verify the following regarding Reviewing Agencies (Sending a copy to reviewing agencies is required):</p> <p>COPY SENT TO:</p> <p><input checked="" type="checkbox"/> County or Regional Planning Commission</p> <p><input checked="" type="checkbox"/> Conservation District</p> <p><input checked="" type="checkbox"/> Township (if county has zoning authority)</p>	<p>Before forwarding to State Agency, FINAL APPLICATION SHOULD INCLUDE:</p> <p><input checked="" type="checkbox"/> Copy of Deed or Land Contract (most recent showing <u>current ownership</u>)</p> <p><input checked="" type="checkbox"/> Copy of most recent Tax Bill (must include <u>tax description</u> of property)</p> <p><input checked="" type="checkbox"/> Map of Farm</p> <p><input type="checkbox"/> Copy of most recent appraisal record</p> <p><input checked="" type="checkbox"/> Copy of letters from review agencies (if available)</p> <p><input checked="" type="checkbox"/> Any other applicable documents</p>
---	---

Questions? Please call Farmland Preservation at 517-284-5663

RESERVED FOR LOCAL GOVERNMENT USE: COMPLETED BY CLERK

I. Application Processing

Date application received: 1-6-2026 (Note: Local governing body has 45 days to take action)

Date action taken by local governing body jurisdiction: Clinton

County Township City Village

Included documentation: Resolution Meeting Minutes

This application is Approved Rejected

*Clerk must complete verification on the next page.

Date of approval or rejection by local governing body: February 24, 2025
(If rejected, please attach statement from local governing body indicating reason(s) for rejection)

Property appraisal: \$ 713,600

Assessor certifies this is the current fair market value of the property.

Parcel # (Tax ID): 19-110-017-100-045-60

Clerk's name: Debra A. Sutherland

Clerk's phone: (989) 224-5140 Clerk's email: Clerk@Clinton-county.org

Debra A. Sutherland

Debra A. Sutherland

2-24-26

Printed Name of Clerk

Signature of Clerk

Date

Assessor's name: Peggy A. Lidgard

Assessor's phone: (517) 669-1205 Assessor's email: LIDGARDASSESSING@COMCAST.NET

Peggy A. Lidgard

Peggy A. Lidgard

1/23/26

Printed Name of Assessor

Signature of Assessor

Date

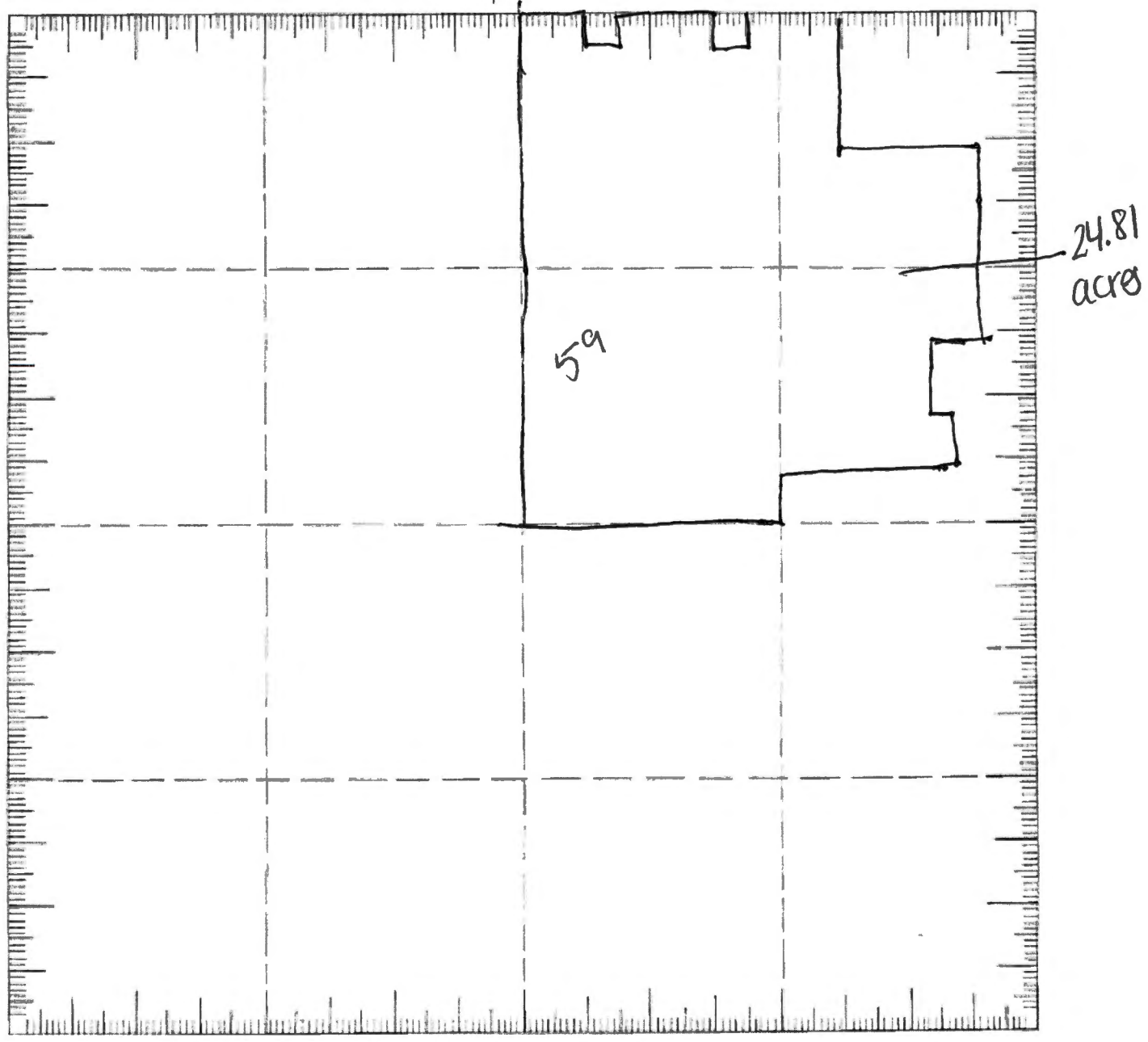
Map of Farm with Structures and Natural Features:

- A. Show boundary of land cited in application. (Grid below is designed to represent a 5280 ft² (1 mile²) Section)
- B. Show all buildings (house(s), barn(s), etc.); also label roads and other avenues of travel (i.e. utility access, etc.).
- C. Outline and designate the current uses of the property (crops, pasture, forest, swamp, etc.).
- D. Clear copies of map(s) provided by USDA Farm Service Agency are acceptable, but please label any roads visible on map, structures and their use, etc.

Note: Any residential structures housing persons not directly associated with the farm operation must be excluded from the application. Please indicate if a building falls in this category and provide the appropriate property description for its exclusion. Unless the appropriate description is included, your application cannot be processed.

County Clinton
Township Olive
T 6N R 2W Section 17

↑ North



<p align="center">MESSAGE TO TAXPAYER</p> <p>CREDIT CARD (FEE 2.65%), ECHECK (FEE \$2.95) PAYMENTS AVAILABLE AT OLIVETOWNSHIPCCMI.GOV</p> <p>POSTMARK NOT ACCEPTED AS DATE OF PAYMENT.</p> <p>PLEASE INCLUDE A SELF-ADDRESSED STAMPED ENVELOPE IF A RECEIPT IS REQUESTED.</p>	<p align="center">PAYMENT INFORMATION</p> <p>PAY BY MAIL OR DROPBOX AT THE OLIVE TOWNSHIP HALL 1400 WEST PRATT ROAD, DEWITT, MI 48820</p> <p>PAYMENTS ACCEPTED IN-PERSON ON SATURDAY DECEMBER 6 & 20, JANUARY 10 & 24, FEBRUARY 14 FROM 9AM - NOON. ALSO 12/30/25 AND 3/2/26 FROM 9AM - 5PM AT THE OLIVE TOWNSHIP HALL. QUESTIONS? PLEASE EMAIL TREASURER@OLIVETOWNSHIPCCMI.GOV OR CALL/TEXT 989-272-8091 Princ. Residence Exemption Has Reduced Bill By: 2004.37</p>																																																														
<p align="center">PROPERTY INFORMATION</p> <p>Property Assessed To: BAILEY, KEVIN & CHANT, GARY 4152 W CENTERLINE RD ST JOHNS, MI 48879</p> <p>Prop #: 19-110-017-100-045-60 School: 19140 Prop Addr: V/L W JASON RD QUALIFIED AGRICULTURAL PROPERTY EXEMPTION Legal Description: COM AT THE N 1/4 COR SEC 17, T6N R2W, TH E 351.20 FT, TH S 250.00 FT, TH E 200 FT, TH N 250.00 FTTH E 238.80 FT, TH S 165.00 FT, TH E 132.00 FT, TH N 165.00 FT, TH E 399.84 FT, TH S 988.80 FT, TH E 918.11 FT, TH S 544.01 FT, TH W 141.18 FT, TH S 469.49 FT, TH E 148.50 FT, TH S 305.00 FT, TH W 924.90 FT, TH S 330.00 FT, TH W 1320.77 FT, TH N 2642.36 FT TO THE POB. NEW 2015 FROM 110-017-100-045-00 & PART OF 110-017-100-030-51.</p> <p align="center">*BALANCE OF DESCRIPTION ON FILE*</p> <p>As of March 1st, all or part of your prior year taxes were returned delinquent to the County. For more information please call the County Treasurer (989) 224-5280.</p>	<p align="center">TAX DETAIL</p> <table style="width:100%; border-collapse: collapse;"> <tr> <td style="width:60%;">Taxable Value:</td> <td style="width:20%; text-align: right;">111,354</td> <td style="width:20%;"></td> </tr> <tr> <td>State Equalized Value:</td> <td style="text-align: right;">356,800</td> <td>Class: 102</td> </tr> <tr> <td>PRE/MBT %:</td> <td style="text-align: right;">100.0000</td> <td></td> </tr> <tr> <td></td> <td></td> <td>Mort Code:</td> </tr> </table> <div style="border: 1px solid black; padding: 5px; margin: 5px 0;"> <p align="center">Taxes are based upon Taxable Value. 1 mill equals \$1.00 per \$1000 of Taxable Value. Amounts with no millage are either Special Assessments or other charges added to this bill.</p> </div> <table style="width:100%; border-collapse: collapse;"> <thead> <tr> <th style="text-align: left;">DESCRIPTION</th> <th style="text-align: right;">MILLAGE</th> <th style="text-align: right;">AMOUNT</th> </tr> </thead> <tbody> <tr><td>E-911</td><td style="text-align: right;">0.83280</td><td style="text-align: right;">92.73</td></tr> <tr><td>CLINTON TRANSIT</td><td style="text-align: right;">0.69620</td><td style="text-align: right;">77.52</td></tr> <tr><td>OL TWP ALLOC</td><td style="text-align: right;">0.98760</td><td style="text-align: right;">109.97</td></tr> <tr><td>BRIGGS LIBRARY</td><td style="text-align: right;">0.73480</td><td style="text-align: right;">81.82</td></tr> <tr><td>S J SCH DEBT</td><td style="text-align: right;">7.00000</td><td style="text-align: right;">779.47</td></tr> <tr><td>S J SCH OPER</td><td style="text-align: right;">18.00000</td><td style="text-align: right;">EXEMPT</td></tr> <tr><td>CL RESA ALLOC</td><td style="text-align: right;">0.19810</td><td style="text-align: right;">22.05</td></tr> <tr><td>CL RESA SPEC ED</td><td style="text-align: right;">2.60200</td><td style="text-align: right;">289.74</td></tr> <tr><td>CL RESA VOC ED</td><td style="text-align: right;">0.97130</td><td style="text-align: right;">108.15</td></tr> </tbody> </table> <table style="width:100%; border-collapse: collapse;"> <tr> <td style="width:60%;"></td> <td style="text-align: right;">Total Tax</td> <td style="text-align: right;">32.02280</td> <td style="text-align: right;">1,561.45</td> </tr> <tr> <td></td> <td style="text-align: right;">Administration Fee</td> <td></td> <td style="text-align: right;">15.61</td> </tr> <tr> <td></td> <td style="text-align: right;">TOTAL AMOUNT DUE</td> <td></td> <td style="text-align: right;">1,577.06</td> </tr> <tr> <td></td> <td style="text-align: right;">PREV. PAYMENTS</td> <td></td> <td></td> </tr> <tr> <td></td> <td style="text-align: right;">BALANCE DUE</td> <td></td> <td style="text-align: right;">1,577.06</td> </tr> </table>	Taxable Value:	111,354		State Equalized Value:	356,800	Class: 102	PRE/MBT %:	100.0000				Mort Code:	DESCRIPTION	MILLAGE	AMOUNT	E-911	0.83280	92.73	CLINTON TRANSIT	0.69620	77.52	OL TWP ALLOC	0.98760	109.97	BRIGGS LIBRARY	0.73480	81.82	S J SCH DEBT	7.00000	779.47	S J SCH OPER	18.00000	EXEMPT	CL RESA ALLOC	0.19810	22.05	CL RESA SPEC ED	2.60200	289.74	CL RESA VOC ED	0.97130	108.15		Total Tax	32.02280	1,561.45		Administration Fee		15.61		TOTAL AMOUNT DUE		1,577.06		PREV. PAYMENTS				BALANCE DUE		1,577.06
Taxable Value:	111,354																																																														
State Equalized Value:	356,800	Class: 102																																																													
PRE/MBT %:	100.0000																																																														
		Mort Code:																																																													
DESCRIPTION	MILLAGE	AMOUNT																																																													
E-911	0.83280	92.73																																																													
CLINTON TRANSIT	0.69620	77.52																																																													
OL TWP ALLOC	0.98760	109.97																																																													
BRIGGS LIBRARY	0.73480	81.82																																																													
S J SCH DEBT	7.00000	779.47																																																													
S J SCH OPER	18.00000	EXEMPT																																																													
CL RESA ALLOC	0.19810	22.05																																																													
CL RESA SPEC ED	2.60200	289.74																																																													
CL RESA VOC ED	0.97130	108.15																																																													
	Total Tax	32.02280	1,561.45																																																												
	Administration Fee		15.61																																																												
	TOTAL AMOUNT DUE		1,577.06																																																												
	PREV. PAYMENTS																																																														
	BALANCE DUE		1,577.06																																																												
<p align="center">OPERATING FISCAL YEARS</p> <p>The taxes on bill will be used for governmental operations for the following fiscal year(s):</p> <p>County: JAN 1 - DEC 31 Twn/Cty: APR 1 - MAR 31 School: JUL 1 - JUN 30 State: OCT 1 - SEP 30 Does NOT affect when the tax is due or its amount</p>																																																															

Please detach along perforation. Keep the top portion.

Mort Code

Bill # 20044

Pay this tax to:
OLIVE TOWNSHIP TREASURER
1400 WEST PRATT ROAD
DEWITT MI 48820

PLEASE RETURN THIS PORTION WITH PAYMENT. THANK YOU.	
This Tax is due 02/16/2026	
After 02/16/2026 additional interest and fees apply	
2025 Winter	Tax for Prop #: 19-110-017-100-045-60

TAXPAYER NOTE: Is your name & mailing address correct? If not, please make corrections below. Thank You.

Make Check Payable To: OLIVE TOWNSHIP TREASURER

Property Addr: V/L W JASON RD

TOTAL AMOUNT DUE: **1,577.06**

Amount Remitted: _____

To: BAILEY, KEVIN & CHANT, GARY
4152 W CENTERLINE RD
ST JOHNS MI 48879



18700

DEED

'84 AUG 22 PM 3 09

WARRANTY DEED

REGISTER OF DEEDS
CLINTON COUNTY, MICH.

The Grantor(s) JOANNE O' SHAUGHNESSEY, a/k/a JOANNE MCQUEEN whose address is 3330 Lehman Rd., DeWitt, MI 48820

convey(s) and warrant(s) to KEVIN L. BAILEY, a single man and GARY CHANT, a single man as Tenants in Common, whose address is 6952 S. Airport Rd., DeWitt, MI 48820

the following described premises situated in the Township of Olive, County of Clinton and State of Michigan:

The East 1/2 of the Northwest 1/4 of Section 17, Town 6 North, Range 2 West, Olive Township, Clinton County, Michigan.

AND

The Northwest 1/4 of the Southeast 1/4 of Section 17, Town 6 North, Range 2 West, Olive Township, Clinton County, Michigan.

AND

The West 1/2 of the Northeast 1/4 of Section 17, Town 6 North, Range 2 West, Olive Township, Clinton County, Michigan, except the following 2 parcels: (1) That part of the Northwest 1/4 of the Northeast 1/4 of Section 17, Town 6 North, Range 2 West, Olive Township, Clinton County, Michigan, beginning on the Section line at a point 790 feet East of the North 1/4 post, thence East 132.0 feet on the section line, thence Southerly 165.0 feet parallel with the North-South 1/4 line, thence West 132 feet, thence Northerly 165 feet to the point of beginning: (2) Commencing at the North 1/4 corner of Section 17, Town 6 North, Range 2 West, Olive Township, Clinton County, Michigan, thence East 351.20 feet along the North line of said section to the true point of beginning: thence East 200.00 feet, thence South 250.00 feet perpendicular to said North line, thence West 200.00 feet parallel with said North line, thence North 200.00 feet to the point of beginning.

NOTE: Parties of the first part do not warrant any claims arising because of the acts, or failure to act, on part of anyone except themselves and subsequent to July 5, 1979.

NOTE: This deed is given in fulfillment of a certain Land Contract dated July 5, 1979.

for the sum of ONE HUNDRED SEVENTY THOUSAND AND NO/100 (\$170,000.00)

subject to easements and building and use restrictions of record and further subject to (NONE).

Dated this 21 day of August, 1984.

Signed in presence of:

JANET K. BECKER

BARBARA FOSTER

STATE OF MICHIGAN
COUNTY OF CLINTON

Signed by:

JOANNE O' SHAUGHNESSEY, a/k/a
JOANNE MCQUEEN

THE FOREGOING INSTRUMENT WAS ACKNOWLEDGED BEFORE ME THIS 21st day of August, 1984 by JoAnne O'Shaughnessey, aka Joanne McQueen.

JANET K. BECKER
Notary Public, Clinton County, MI
My Commission Expires Feb. 11, 1986

Drafted by
John E. Wieser (P28441)
103 E State St
St. Johns, MI 48879

TREASURER'S OFFICE
St. Johns, Mich. Aug 22, 1984
I hereby certify that there are no tax liens or titles held by the state or individuals on the lands described in the within instrument and that all taxes which by law are required to be returned to this office have been fully paid for the five years preceding the date of said instrument as shown by the records of this office. This certificate does not apply to the taxes if any now in process of collection in this city or village collecting offices.
John E. Wieser
County Treasurer

110-017-200-005-00
110-017-400-030-00
110-017-100-045-00

REAL ESTATE
TRANSFER TAX
187.00
STATE OF MICHIGAN
AUG 22 1984
CLINTON COUNTY

4 0 5 0 4

101

Peggy

20

State of Michigan - Real Estate Transfer Tax

Clinton Co \$118.00-C
05/27/2016 \$810.00-S
212895 #107417

RECEIVED
REGISTER OF DEEDS
CLINTON COUNTY, MI

2016 MAY 27 P 1:24

Clinton County Treasurer's Certificate

I HEREBY CERTIFY there are no TAX LIENS or TITLES held by the State or individuals on the lands described within and that all TAXES on same are paid for the FIVE years preceding the date of this instrument as shown by the records in this office except taxes in process of local collection or PRE Dermal.

May 27, 2016
Date

Tina Ward
Tina Ward, Clinton County Treasurer

5241390
05/27/2016 03:30 PM Page: 1 of 3
Deed (Warranty) Receipt # 107417
Diane Zuker, Clinton Co



WARRANTY DEED

110-017-100-045-60

KNOW ALL PERSONS BY THESE PRESENTS: That Dale Hitchcock and Sharon Hitchcock, husband and wife whose address is 7386 Loomis Road DeWitt, MI 48820 Convey(s) and Warrant(s) to Kevin L. Bailey, a married man and Gary L. Chant, a married man as joint tenants with full rights of survivorship whose address is 4152 W. Centerline Road, St. Johns, MI 48879 the following described premises situated in the Township of Olive, County of Clinton, and State of Michigan to-wit:

24

SEE ATTACHED EXHIBIT "A"

Commonly known v/l Loomis Road, DeWitt, MI 48820
as:
Tax Parcel # 19-110-017-100-045-60 (pt)

for the consideration of: One Hundred Eight Thousand and 00/100 Dollars (\$108,000.00)

subject to easement, use, building, and other restrictions of record, if any.

This property may be located within the vicinity of farmland or farm operations. Generally accepted agricultural and management practices which may generate noise, dust, odors and other associated conditions may be used and are protected by the Michigan right to farm act.

The grantor grants to the grantee the right to make ALL division(s) under Section 108 of the Land Division Act, Act No. 288 of the Public Acts of 1967.

Dated: May 26, 2016

Signed and Sealed:

Dale Hitchcock
Dale Hitchcock

Sharon Hitchcock
Sharon Hitchcock



5241390

05/27/2016 03:30 PM

Page: 2 of 3

Deed (Warranty) Receipt #107417

Diane Zuker, Clinton County

STATE OF MICHIGAN

COUNTY OF Clinton

The foregoing instrument was acknowledged before me on May 26, 2016, by Dale Hitchcock and Sharon Hitchcock, husband and wife.

Print Name:

Notary _____ County, Michigan
Acting in _____ County
My commission expires:

L. RADEMACHER
NOTARY PUBLIC - STATE OF MICHIGAN
COUNTY OF CLINTON
My Commission Expires April 28, 2019
Acting in the County of Clinton

File No. 136433LAN

Drafted by:	Return to:
Dale Hitchcock 7386 Loomis Road DeWitt, MI 48820	Kevin L. Bailey 4152 W. Centerline Road St. Johns, MI 48879
County Treasurer's Certificate	City Treasurer's Certificate



5241390

05/27/2016 03:30 PM

Page: 3 of 3

Deed (Warranty) Receipt #107417

Diane Zuker, Clinton County

Escrow File No.: 136433LAN

EXHIBIT "A"
DEED

Parcel A:

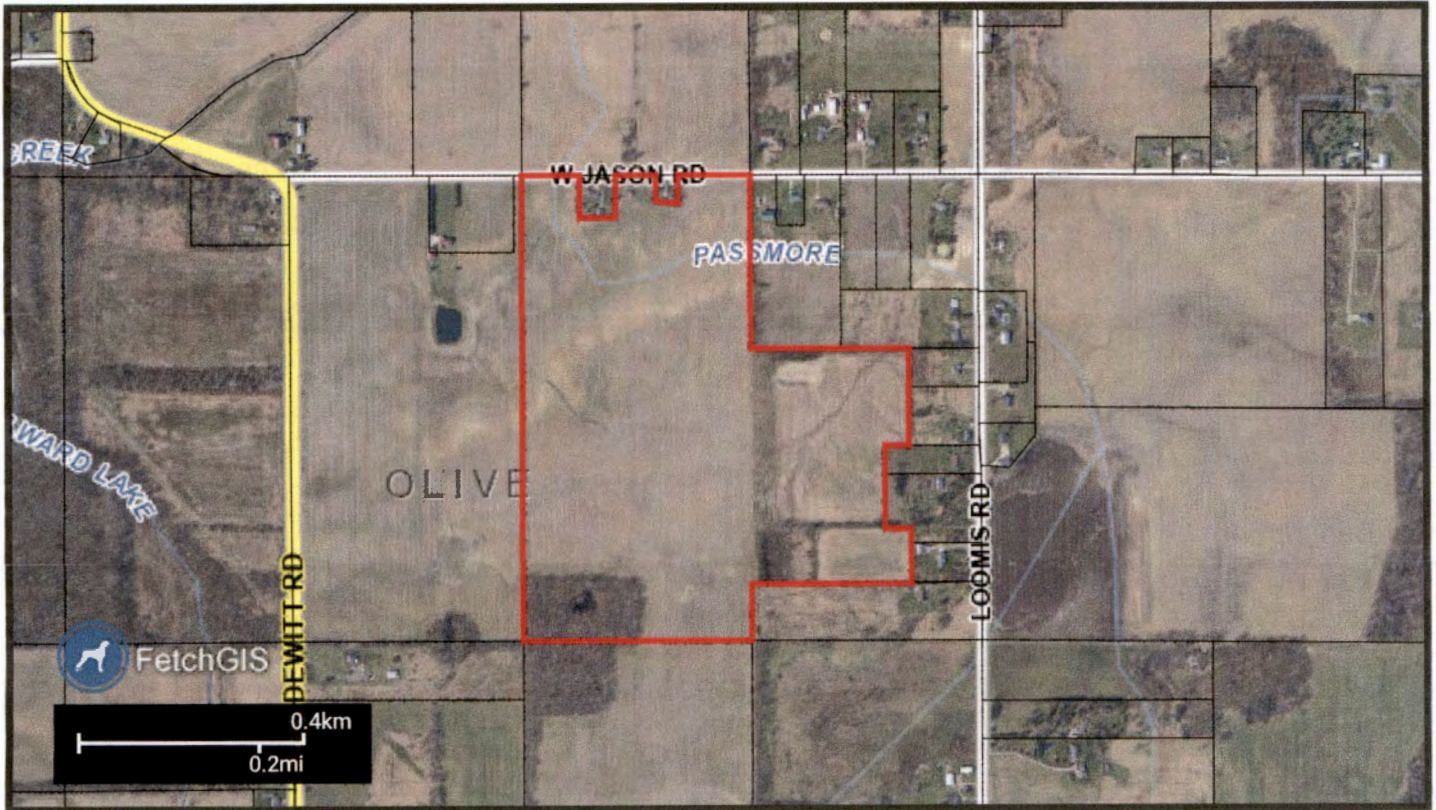
A parcel of land in the Northeast 1/4 of Section 17, Town 6 North, Range 2 West, Olive Township, Clinton County, Michigan, described as follows: To fix the point of beginning commence at the East 1/4 corner of said Section 17; thence North 00 degrees 02 minutes 20 seconds East on the East line of said Section 330.00 feet; thence South 89 degrees 55 minutes 31 seconds West, parallel with the East and West 1/4 line of said Section 396.00 feet to the point of beginning; thence continuing South 89 degrees 55 minutes 31 seconds West, parallel with said East and West 1/4 line 924.90 feet to the East 1/8 line of said Section; thence North 00 degrees 00 minutes 56 seconds East on said East 1/8 line 1320.99 feet (previously recorded as 1317.2 feet); thence South 89 degrees 57 minutes 47 seconds East, parallel with the North line of said Section 918.11 feet (previously recorded as 888.2 feet); thence South 00 degrees 02 minutes 20 seconds West, parallel with said East Section line 544.01 feet (previously recorded as 540 feet); thence South 89 degrees 38 minutes 30 seconds West 141.18 feet; thence South 00 degrees 02 minutes 20 seconds West, parallel with said East Section line 469.49 feet; thence North 89 degrees 55 minutes 31 seconds East, parallel with said East and West 1/4 line 148.50 feet; thence South 00 degrees 02 minutes 20 seconds West, parallel with said East Section line 305.00 feet to the point of beginning.



Clinton County GIS

Parcel Report: 110-017-100-045-60

1/6/2026
8:12:35 AM



Property Address

V/L W JASON RD
DEWITT, MI, 48820

Owner Address

BAILEY, KEVIN & CHANT, GARY
-
4152 W CENTERLINE RD
ST JOHNS, MI 48879

Unit: 110
Unit Name: OLIVE TOWNSHIP

General Information for 2025 Tax Year

Parcel Number:	110-017-100-045-60	Assessed Value:	\$356,800
Property Class:	102	Taxable Value:	\$111,354
Class Name:	AGRICULTURAL VACANT	State Equalized Value:	\$356,800
School Dist Code:	19140		
School Dist Name:	ST JOHNS PUBLIC SCHOOLS		

PRE 2024: 100%

PRE 2025: 100%

Prev Year Info	MBOR Assessed	Final SEV	Final Taxable
2024	\$274,800	\$274,800	\$108,006
2023	\$273,900	\$273,900	\$102,863

Land Information

Acreeage:	104.81
Zoning:	A2

Tax Description

COM AT THE N 1/4 COR SEC 17, T6N R2W, TH E 351.20 FT, TH S 250.00 FT, TH E 200 FT, TH N 250.00 FTTH E 238.80 FT, TH S 165.00 FT, TH E 132.00 FT, TH N 165.00 FT, TH E 399.84 FT, TH S 988.80 FT, TH E 918.11 FT, TH S 544.01 FT, TH W 141.18 FT, TH S 469.49 FT, TH E 148.50 FT, TH S 305.00 FT, TH W 924.90 FT, TH S 330.00 FT, TH W 1320.77 FT, TH N 2642.36 FT TO THE POB. NEW 2015 FROM 110-017-100-045-00 & PART OF 110-017-100-030-51.

Sales Information

No Records Found

Tax History *Total Due as of settlement date

Tax Details 2024 Winter

School Dist. Code:	19140	Assessed Value:	\$274,800
School Dist. Name:	ST JOHNS PUBLIC SCHOOLS	Taxable Value:	\$108,006
Property Class:	102	State Equalized Value:	\$274,800
Class Name:	AGRICULTURAL VACANT	Exemption Percent:	100%

Last Payment Date:

Base Tax:	\$1,535.47	Base Paid:	\$0.00
Admin Fees:	\$15.11	Admin Fees Paid:	\$0.00
Interest Fees:	\$0.00	Interest Fees Paid:	\$0
Total Tax & Fees:	\$1,550.58	Total Paid:	\$0.00

Tax Items 2024 Winter

Tax Source	Millage Rate	Tax Amt.	Base Amt. Paid
E-911	0.8364	90.33	\$0.00
CLINTON TRANSIT	0.6899	74.51	\$0.00
OL TWP ALLOC	0.19911	107.04	\$0.00

BRIGGS LIBRARY	0.7383	79.74	\$0.00
S J SCH DEBT	7	756.04	\$0.00
S J SCH OPER	18	0.00	\$0.00
CL RESA ALLOC	0.1993	21.52	\$0.00
CL RESA SPEC ED	2.564	276.92	\$0.00
CL RESA VOC ED	0.9769	105.51	\$0.00
S J SCH OPER FC	18	0.00	\$0.00
ALWARD LAKE DRAI	0	23.86	\$0.00

Tax Details 2024 Summer

School Dist. Code:	19140	Assessed Value:	\$274,800
School Dist. Name:	ST JOHNS PUBLIC SCHOOLS	Taxable Value:	\$108,006
Property Class:	102	State Equalized Value:	\$274,800
Class Name:	AGRICULTURAL VACANT	Exemption Percent:	100%

Last Payment Date: September 16, 2024

Base Tax:	\$1,273.01	Base Paid:	\$1,273.01
Admin Fees:	\$12.73	Admin Fees Paid:	\$12.73
Interest Fees:	\$0.00	Interest Fees Paid:	\$0
Total Tax & Fees:	\$1,285.74	Total Paid:	\$1,285.74

Tax Items 2024 Summer

Tax Source	Millage Rate	Tax Amt.	Base Amt. Paid
STATE EDUC TAX	6	648.03	\$648.03
CLINTON COUNTY	5.7866	624.98	\$624.98

Tax Details 2023 Winter

School Dist. Code:	19140	Assessed Value:	\$273,900
School Dist. Name:	ST JOHNS PUBLIC SCHOOLS	Taxable Value:	\$102,863
Property Class:	102	State Equalized Value:	\$273,900
Class Name:	AGRICULTURAL VACANT	Exemption Percent:	100%

Last Payment Date: February 14, 2024

Base Tax:	\$1,618.27	Base Paid:	\$1,618.27
Admin Fees:	\$14.50	Admin Fees Paid:	\$14.50
Interest Fees:	\$0.00	Interest Fees Paid:	\$0
Total Tax & Fees:	\$1,632.77	Total Paid:	\$1,632.77

Tax Items 2023 Winter

Tax Source	Millage Rate	Tax Amt.	Base Amt. Paid
CLINTON COUNTY	0.0811	8.34	\$8.34
E-911	0.8384	86.24	\$86.24

CLINTON TRANSIT	0.6924	71.22	\$71.22
OL TWP ALLOC	1	102.86	\$102.86
BRIGGS LIBRARY	0.7401	76.12	\$76.12
S J SCH DEBT	7	720.04	\$720.04
S J SCH OPER	18	0.00	\$0.00
CL RESA ALLOC	0.2	20.57	\$20.57
CL RESA SPEC ED	2.5733	264.69	\$264.69
CL RESA VOC ED	0.9804	100.84	\$100.84
S J SCH OPER FC	18	0.00	\$0.00
STONY CREEK DRAI	0	167.35	\$167.35

Tax Details 2023 Summer

School Dist. Code:	19140	Assessed Value:	\$273,900
School Dist. Name:	ST JOHNS PUBLIC SCHOOLS	Taxable Value:	\$102,863
Property Class:	102	State Equalized Value:	\$273,900
Class Name:	AGRICULTURAL VACANT	Exemption Percent:	100%

Last Payment Date: September 14, 2023

Base Tax:	\$1,205.43	Base Paid:	\$1,205.43
Admin Fees:	\$12.05	Admin Fees Paid:	\$12.05
Interest Fees:	\$0.00	Interest Fees Paid:	\$0
Total Tax & Fees:	\$1,217.48	Total Paid:	\$1,217.48

Tax Items 2023 Summer

Tax Source	Millage Rate	Tax Amt.	Base Amt. Paid
STATE EDUC TAX	6	617.17	\$617.17
CLINTON COUNTY	5.7189	588.26	\$588.26

Application Use:

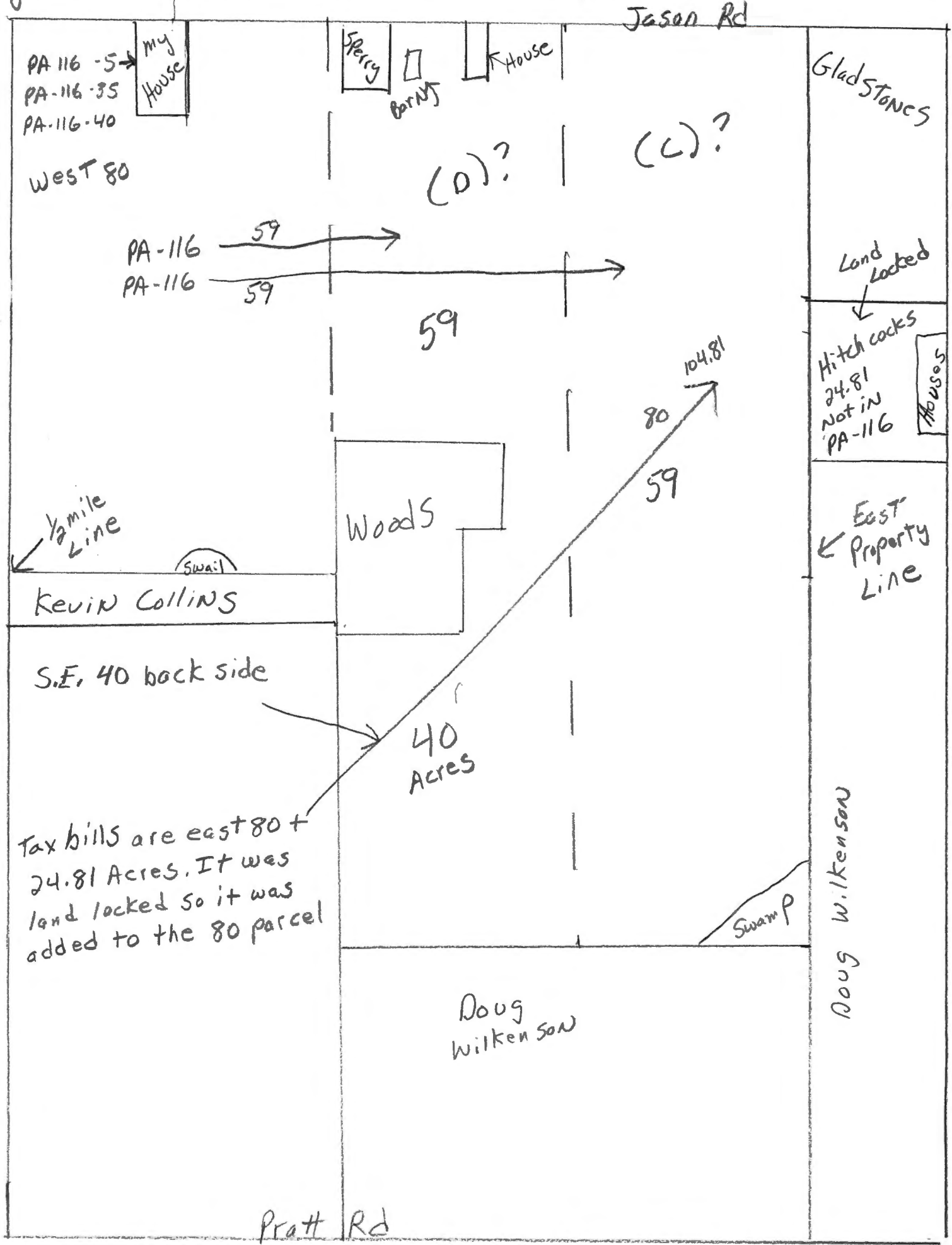
This map is neither a legally recorded map nor a survey and is not intended to be used as such. The information on Clinton County websites, are distributed and transmitted 'as is' without warranties of any kind, either expressed or implied, including without limitations, warranties of title or implied warranties of merchantability or fitness for a particular purpose. Clinton County does not guarantee the accuracy, timeliness, or completeness of the information on this website.

GIS/Mapping:

The Geographic Information System (GIS) made available through this website is developed and maintained by Clinton County. Use of materials and information constitutes acceptance of all disclaimers associated with these websites. GIS data is not the official record of the County. This data is made available for information purposes only!

More land on tax equals then is in the PA-116 program
They need to add 24.81 acres to the PA 116 program

DEED
TRD



Tax bills are east 80 + 24.81 Acres. It was land locked so it was added to the 80 parcel

Gary Chant
2517 W. Jason Rd.
Dewitt, MI 48820
517-897-5483

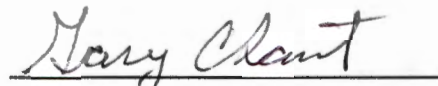
Kevin Bailey
4152 W. Centerline Rd.
St. Johns, MI 48879
517-712-2953

January 6, 2026

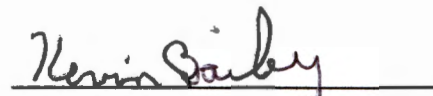
We would like to attach the 24.81 acres that was purchased in 2015 and combined with
Property number. 19-110-017-100-045-60
PA 116 Agreement Number 19-27768C-123130

Please see attached application.
If you have any questions, please contact us at the number above.

Sincerely,



Gary Chant



Kevin Bailey



OLIVE TOWNSHIP
1400 W PRATT RD.
DEWITT, MI 48820

February 10, 2026

Clinton County Board of Commissioners
Clinton County Clerk
100 E. State Street
Suite 2600
St. Johns, MI 48879

RE: PA116 #2026-1

At a regularly scheduled Olive Township Board meeting the Board discussed PA116 #2026-1 and saw no concerns with this application.

Sincerely,
Elizabeth June, Clerk

A handwritten signature in cursive script, appearing to read 'E. June'.

SUPERVISOR
Eric Voisinet
517.331.3932

CLERK
Elizabeth June
517.275.0006

TREASURER
Bonnie Wohlfert
989.272.8091

TRUSTEES
Louis Faivor
Charlie Young

FIRE/EMS BILLING
Sandra June
517.507.2566

ASSESSOR
Peggy Lidgard
517.669.1205

Debra A. Sutherland
Clinton County Clerk ~ Register of Deeds
Stephanie Dush, Chief Deputy Clerk/Register of Deeds

County Clerk

Courthouse
100 E. State St., Suite 2600
St. Johns, MI 48879
(989) 224-5140 Fax (989) 227-6421



Register of Deeds

Courthouse
100 E. State St., Suite 2500
St. Johns, MI 48879
(989) 224-5270 Fax (989) 227-6473

DATE: January 6, 2026

TO: Clinton County Planning Commission
Soil Conservation District
Olive Township Clerk

FROM: Debra Cox
Deputy County Clerk

RE: PA116 Farmland Applications
#2026-1 Olive Township/Section 17

Enclosed please find Applications for Farmland Agreements 2026-1 submitted by Gary L. Chant & Kevin L. Bailey. Pursuant to Public Act 116 of 1974, the applications are being provided for your review, comment and recommendation.

Please submit any response to my office, in writing within 30 days. Your response may be submitted via email to coxd@clinton-county.org or via mail to the Clinton County Clerk, 100 E. State St., Suite 2600, St. Johns.

The applications will be presented to the Board of Commissioners at their monthly meeting at the end of February.

If you have any questions or concerns, please contact the office.

Thank you.

[ADOPTED StJohns-Master Plan 2026-0129 3](#)

To Whom It May Concern,

At its January 26, 2026 meeting, the St. Johns City Commission formally adopted the joint Master Plan and Parks and Recreation Plan.

The adopted plan is available on the City of St. Johns website; a physical copy is also available for review at the City of St. Johns offices at the Clinton County Courthouse, 100 E State St #1100, St. Johns, MI 48879.

Consistent with Michigan Public Act 33 of 2008, as amended (the Michigan Planning Enabling Act), the City of St. Johns Planning Commission is providing this notice.

Ethan Senti

—

Assistant Planner

MCKENNA

📞 248.692.8012 | 📠 616.215.8855

124 East Fulton Street, Suite 6B | Grand Rapids, MI 49503

esenti@mcka.com | mcka.com

[FACEBOOK](#) | [LINKEDIN](#)